

JUDICIAL





JUDICIAL

Article 6 of the Mississippi Constitution of 1890 vests the judicial power of the State of Mississippi in a Supreme Court and lower courts as provided.

Mississippi Court System 275

Mississippi Judicial Route of Appeal 278

Mississippi Supreme Court Districts Map 279

Mississippi Supreme Court Justices 280

Mississippi Court of Appeals Districts Map 287

Mississippi Court of Appeals Judges 288

Senior Status Judges 296

Mississippi Appellate Courts 298

Circuit and Chancery Court Districts by County 300

Circuit Court Districts Map 301

Circuit Court Judges 302

Chancery Court Districts Map 309

Chancery Court Judges 310

District Attorneys 315

County Court Judges 316

Justice Court Judges 319

Municipal Court Judges 326

Intervention Courts 331

Youth Courts 332

Judicial Resources 332

MISSISSIPPI COURT SYSTEM

www.courts.ms.gov

Mississippi has a two-tier appellate court system that reviews decisions of law and fact made by the trial courts. The state's trial court system consists of two general jurisdiction courts (circuit and chancery) and three limited jurisdiction courts (county, justice, and municipal).

SUPREME COURT

The Mississippi Supreme Court is the court of last resort among state courts. Decisions of the Chancery, Circuit and County Courts and of the Court of Appeals may be appealed to the Supreme Court. Appeals which go directly to the Supreme Court include annexations, bond issues, constitutionality challenges, death penalty cases, disciplinary matters involving attorneys and judges, election contests, certified questions from federal court, utility rates, cases of first impression, and issues of broad public interest.

Nine Supreme Court justices are elected from three districts. Non-partisan elections are staggered so that not all positions are up for election at once. Supreme Court justices serve eight-year terms.

Each Supreme Court justice participates in deciding appeals from the entire state. Decisions are by a majority vote of the court.

The nine justices may sit in en banc (all members participating) or in three-judge panels.

SUPREME COURT DISTRICTS:

1 – Counties: Bolivar, Claiborne, Copiah, Hinds, Holmes, Humphreys, Issaquena, Jefferson, Kemper, Lauderdale, Leake, Madison, Neshoba, Newton, Noxubee, Rankin, Scott, Sharkey, Sunflower, Warren, Washington, Yazoo; *2 – Counties:* Adams, Amite, Clarke, Covington, Forrest, Franklin, George, Greene, Hancock, Harrison, Jackson, Jasper, Jefferson Davis, Jones, Lamar, Lawrence, Lincoln, Marion, Pearl River, Perry, Pike, Simpson, Smith, Stone, Walthall, Wayne, Wilkinson; and *3 – Counties:* Alcorn, Attala, Benton, Calhoun, Carroll, Chickasaw, Choctaw, Clay, Coahoma, Desoto, Grenada, Itawamba, Lafayette, Lee, Leflore, Lowndes, Marshall, Monroe, Montgomery, Oktibbeha, Panola, Pontotoc, Prentiss, Quitman, Tallahatchie, Tate, Tippah, Tishomingo, Tunica, Union, Webster, Winston, Yalobusha.

QUALIFICATIONS: A qualified elector for and from the Supreme Court District in which election is sought (residency), a practicing attorney, at least 30 years of age, and a citizen of the state for five (5) years preceding the day of election.

Fee: \$200 made payable to the State Board of Election Commissioners, delivered to the Secretary of State's Office.

TERMS OF COURT: A term of the Supreme Court shall be held twice each year in the city of Jackson, to be styled the Supreme Court; and the terms shall commence the second Monday of September and the first Monday of March, and the Court shall be kept open for the discharge of business for at least nine months of every year if the business therein should require.

COURT OF APPEALS

The Court of Appeals hears cases assigned by the Supreme Court. The Court of Appeals is an error correction court. It hears and decides appeals on issues in which the law is already settled, but the facts are in dispute. The Supreme Court may review Court of Appeals decisions. If the Supreme Court declines review, the decision of the Court of Appeals stands.

The Mississippi Legislature created the Court of Appeals in 1994 to speed appeals and relieve a backlog of cases before the Supreme Court. The Court of Appeals began hearing cases in 1995.

Ten Court of Appeals judges are elected from five districts. Non-partisan elections are staggered so that not all positions are up for election at one time. Court of Appeals judges serve eight-year terms. Court of Appeals judges hear cases from all over the state.

QUALIFICATIONS: A practicing attorney, at least 30 years of age, and a citizen of the state for five (5) years preceding the day of election.

Fee: \$200 made payable to the State Board of Election Commissioners, delivered to the Secretary of State's Office.

TERMS OF COURT: The Court of Appeals meets continuously throughout the year and hears arguments every month except July. By law, the Court is located in the city of Jackson as close as convenient to the State Law Library and the Supreme Court.

CIRCUIT COURTS

Circuit Courts hear felony criminal prosecutions and civil lawsuits. Mississippi's 22 Circuit Courts have original jurisdiction over all civil and criminal matters not vested exclusively in another court. Circuit Courts also hear appeals from County, Justice, and Municipal courts and from administrative boards and commissions such as the Mississippi Department of Employment Security.

There are 22 Circuit Court districts and 57 Circuit Court judges. Circuit Court judges are selected in non-partisan elections to serve four-year terms. Most Circuit Court trials are heard with a 12-member jury and usually one or two alternate jurors. A judge may preside without a jury if the dispute is a question of law rather than fact. Circuit judges have the power to issue extraordinary writs.

QUALIFICATIONS: A practicing attorney for five (5) years, at least 26 years of age, and a citizen of the state for five (5) years.

Fee: \$100 made payable to the State Board of Election Commissioners, delivered to the Secretary of State's Office.

TERMS OF COURT: Each year, the circuit court judges issue orders establishing the commencement and continuation of terms of court no later than October 1. If no order is issued, then the court term remains unchanged from the previous year. This information is posted at each courthouse and is published annually by the Secretary of State in the Judiciary Directory and Court Calendar.

CHANCERY COURTS

Chancery Courts have jurisdiction over disputes in matters involving equity; domestic matters including adoptions, custody disputes and divorces; guardianships; sanity hearings; wills; and challenges to constitutionality of state laws. Land records are filed in Chancery Court. The Chancery Courts' jurisdiction over equity matters involving less than \$200,000 is concurrent with County Courts.

Chancery Courts have jurisdiction over juvenile matters in counties which have no County Court. The chancellor may appoint a lawyer in private practice to sit as a youth court referee to hear juvenile matters such as delinquency, abuse, and neglect.

Trials are typically heard by a chancellor without a jury, although state law allows parties to request a jury in Chancery Court.

There are 20 Chancery Court districts and 52 Chancery Court judges. Chancery Court judges are selected in non-partisan elections to serve four-year terms.

QUALIFICATIONS: A practicing attorney for five (5) years, at least 26 years of age, and a citizen of the state for five (5) years.

Fee: \$100 made payable to the State Board of Election Commissioners, delivered to the Secretary of State's Office.

TERMS OF COURT: Each year, chancellors issue orders establishing the commencement and continuation of terms of court no later than October 1. If no order is issued, then the court term remains unchanged from the previous year. This information is posted at each courthouse and is published by the Secretary of State in the Judiciary Directory and Court Calendar.

COUNTY COURTS

County Courts have exclusive jurisdiction over eminent domain proceedings and juvenile matters. In counties which have a County Court, a County Court judge also serves as the Youth Court judge. County Courts share jurisdiction with Circuit and Chancery Courts in some civil matters. The jurisdictional limit of County Courts is up to \$200,000. County Courts may handle non-capital felony cases transferred from Circuit Court. County Court judges may issue search warrants, set bond, and preside over preliminary hearings. County Courts have concurrent jurisdiction with Justice Courts in all matters, civil and criminal.

Mississippi has 22 County Courts and 30 County Court judges. Counties which have a County Court include Adams, Bolivar, Coahoma, DeSoto, Forrest, Hancock, Harrison, Hinds, Jackson, Jones, Lamar, Lauderdale, Lee, Leflore, Lowndes, Madison, Pearl River, Pike, Rankin, Warren, Washington, and Yazoo.

County Court judges serve four-year terms. Elections are non-partisan.

QUALIFICATIONS: A qualified elector for and from the county court district (residency), at least 26 years old, a practicing attorney for five (5) years, and a citizen of the state for five (5) years preceding the election.

Fee: \$15 made payable to county Circuit Clerk.

TERMS OF COURT: County Court usually begins the second Monday of each month, unless a special order is entered by the court to extend the term, or, in the case of some counties with two courthouses, the law provides special terms of court for each courthouse.

JUSTICE COURTS

Justice Courts have jurisdiction over small claims civil cases involving amounts of \$3,500 or less, misdemeanor criminal cases, and any traffic offense that occurs outside a municipality. Justice Court judges may conduct bond hearings and preliminary hearings in felony criminal cases and may issue search warrants.

There are 82 Justice Courts with 197 judges. Each county is divided into justice court districts, the number determined by population. Justice Court judges are the only Mississippi judges elected in partisan races. They serve four-year terms.

QUALIFICATIONS: A qualified elector, a resident of the county for two (2) years preceding the day of election, a high school graduate or its equivalent, and complete a course of training required by law within six (6) months of the beginning of the term of office.

Fee for party candidates: \$100 made payable to the appropriate county executive committee via Circuit Clerk.

Fee for independent candidates: \$100 paid to the county via the Circuit Clerk and petition filed with the Circuit Clerk containing signatures of not less than 15 qualified electors of the district.

TERMS OF COURT: Justice Court judges hold regular terms of their courts, at such times as they may appoint, but no more than two and not less than one term in every month.

MUNICIPAL COURTS

Municipal courts have jurisdiction over misdemeanor crimes, municipal ordinances and city traffic violations. Municipal judges may conduct initial appearances in which defendants are advised of the charges being filed, as well as bond hearings and preliminary hearings.

There are 237 Municipal Courts. Most municipalities have one judge, although a few jurisdictions have several.

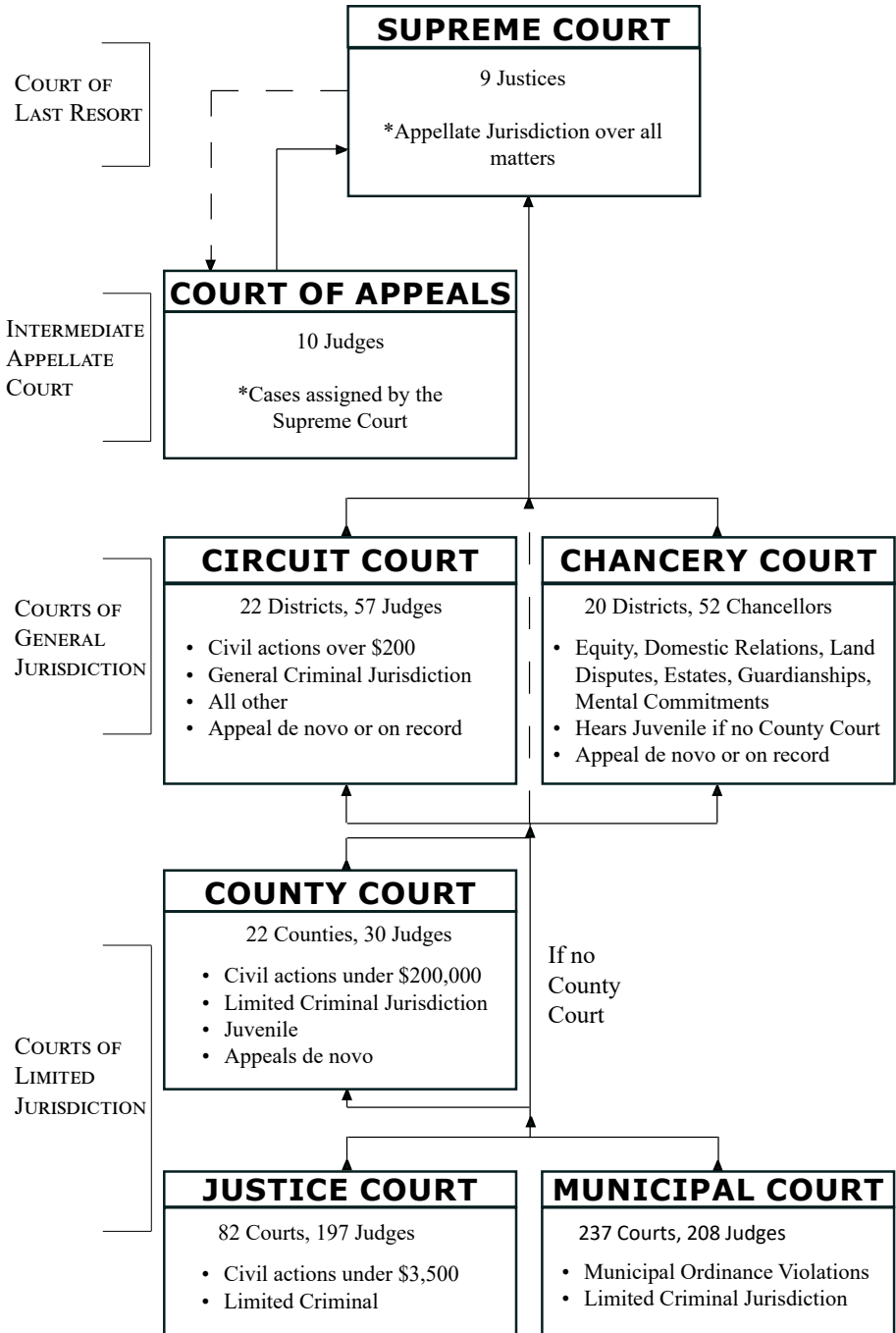
Most municipal judges are appointed by governing bodies of municipalities. Terms of office vary. Miss. Code Ann. § 21-23-1 (1972).

QUALIFICATIONS: A qualified elector of the county in which the municipality is located and an attorney at law.

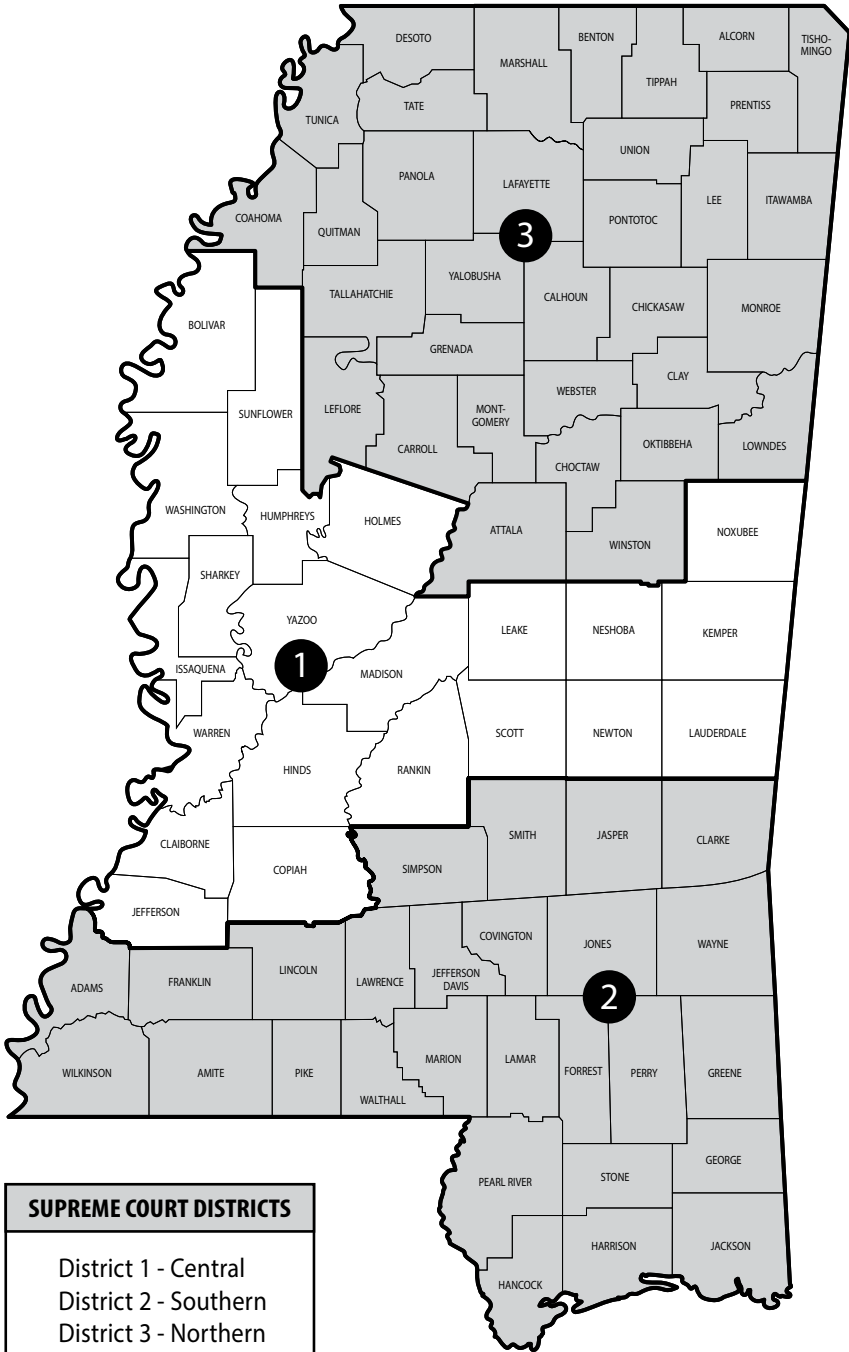
TERMS OF COURT: Municipal judges may hold court every day, except Sundays and legal holidays, if the business of the municipality requires.



MISSISSIPPI JUDICIAL ROUTE OF APPEAL



MISSISSIPPI SUPREME COURT DISTRICTS



MISSISSIPPI SUPREME COURT JUSTICES

(601) 359-3697/f(601) 359-2443



Michael K. Randolph, Chief Justice

Judicial Assistant: Peggy Brown

Phone: (601) 359-2100

James W. Kitchens, Presiding Justice

Judicial Assistant: Cindy Henderson

Phone: (601) 359-2180

Leslie D. King, Presiding Justice

Judicial Assistant: Mabel Davenport

Phone: (601) 359-2096

Josiah D. Coleman, Associate Justice

Judicial Assistant: Mary Beth Samsel

Phone: (601) 359-2102

James D. Maxwell II, Associate Justice

Judicial Assistant: Ellen Ford

Phone: (601) 359-2107

Dawn H. Beam, Associate Justice

Judicial Assistant: Julia Soutullo

Phone: (601) 359-2093

Robert P. Chamberlin, Associate Justice

Judicial Assistant: Mary Ewing

Phone: (601) 359-2099

David M. Ishee, Associate Justice

Judicial Assistant: Debra Dodd

Phone: 601-359-2184

T. Kenneth Griffis, Associate Justice

Judicial Assistant: Wende Weaver

Phone: (601) 359-2139





Chief Justice
Michael K. Randolph
District 2
Place 3

Justice Michael K. Randolph was appointed to the Mississippi Supreme Court by Gov. Haley Barbour on April 23, 2004. Justice Randolph was appointed to serve the unexpired term of former Chief Justice Edwin L. Pittman. Justice Randolph was first elected in November 2004, and re-elected in November 2012, for another eight-year term. He became a Presiding Justice of the Supreme Court on January 1, 2013. He became Chief Justice of the Supreme Court on February 1, 2019.

In 2007, he served as Chairman of the Legislatively created Task Force to Study the Justice Court System. Justice Randolph served as co-chairman of the Task Force for Youth Court Rules of Procedure in 2008. He serves on numerous internal committees of the Court.

Justice Randolph was born in 1946. He was decorated for heroism in Vietnam. He served as an air traffic controller with the U.S. Army 1st Infantry Division, known as the Big Red One. He was honorably discharged in 1967. During law school, he received an appointment as a Reserve officer in the United States Navy, Judge Advocate General's Corps. He is a graduate of the Naval Justice School in Newport, Rhode Island. He was honorably discharged in 1975.

He graduated from Rollins College in Winter Park, Fla., with a B.S. degree in business administration in 1972. He earned his Juris Doctorate from the University of Mississippi School of Law in 1974, where he served as president of the Law School Student Body.

Justice Randolph began practicing law in 1975, first in Biloxi with the firm of Ross, King and Randolph. Subsequently he practiced with the firm of Bryan, Nelson, Allen and Schroeder in Pascagoula, Biloxi and Gulfport. He opened a Hattiesburg office for Bryan, Nelson, Allen and Schroeder in 1976, where he later formed the firm of Bryan Nelson Randolph, PA., serving as President and CEO until his appointment to the Supreme Court.

Justice Randolph holds the highest ranking accorded by Martindale-Hubbell and is listed in their Bar Register of Pre-Eminent Lawyers, as well as A.M. Best's Directory of Recommended Insurance Attorneys and The Insurance Bar.

Justice Randolph's legal experience includes extensive state and federal court practice. He primarily devoted his practice to insurance defense for two decades, but in the last decade before appointment to the Supreme Court, his practice was divided equally representing defendants and plaintiffs. He served as regional trial counsel for numerous corporate defendants, as well as national trial counsel for various manufacturing defendants. He has defended physicians, hospitals, nursing homes and home health agencies. He represented numerous insurers in arson and insurance fraud cases. He also had extensive experience in general maritime law and Jones Act cases, primarily representing injured seamen.

Justice Randolph was appointed by President Ronald Reagan to serve on the National Coal Council. He has served on the boards of directors of William Carey College, the Boys and Girls Club of Hattiesburg, the Hattiesburg Girls Shelter, and advisory board of the Hattiesburg Salvation Army. He is a former president of the Hattiesburg Civic Association. He was a member of the Hattiesburg Area Development Partnership.

He has generously supported Christian Services Inc., United Way, the Salvation Army, Hattiesburg Boys and Girls Club, Mississippi Children's Home Society, Baptist Children's Village, Home of Grace, the University of Mississippi, the University of Southern Mississippi and William Carey University.

He is a member of the American Bar Association, the Bar Association of the Fifth Federal Circuit, the Mississippi Bar Association, and the South Central Mississippi Bar Association, which he formerly served as President.

Justice Randolph is a member of Temple Baptist Church in Hattiesburg, where he has served as a deacon and Sunday School teacher. He has also served on the Finance Committee and the By-Laws Committee.

Justice Randolph is married to Kathy Webb Randolph, formerly of Ocean Springs. He has three children and four grandchildren.



Presiding Justice
James W. Kitchens
District 1
Place 3

Justice James W. Kitchens is a lifelong resident of Crystal Springs, Copiah County, Mississippi. Born in 1943, he graduated from Crystal Springs High School in 1961, then earned a Bachelor of Science degree from the University of Southern Mississippi in 1964, and a Juris Doctorate from the University of Mississippi School of Law in 1967.

Justice Kitchens is licensed to practice law in Mississippi and in the District of Columbia, and has been admitted to practice before the United States District Courts for the Northern and Southern Districts of Mississippi, as well as the United States 5th Circuit Court of Appeals and the United States Supreme Court.

He was elected district attorney for the Mississippi counties of Copiah, Lincoln, Pike and Walthall in 1971, 1975 and 1979. He served for nine years before returning to the private practice of law. He did not seek public office again until 2008, when he was elected to an eight year term on the Mississippi Supreme Court (Central District, Place 3), commencing in January of 2009. In 2016, he was elected to a second eight-year term.

Justice Kitchens has been married to Mary Tooke Kitchens, a retired public school teacher, since 1968. They are the parents of five adult children: Suzannah Kitchens Finch, Matthew W. Kitchens, Daniel W. Kitchens, Rebecca Kitchens Thornton and John W. Kitchens. Justice and Mrs. Kitchens have 13 grandchildren.



Presiding Justice
Leslie D. King
District 1
Place 2

Justice Leslie D. King is a native of Greenville, where he began practicing law in 1973. He graduated from the University of Mississippi in 1970, and from the Texas Southern University School of Law in 1973.

Judge King was elected to the Court of Appeals in 1994 and began hearing cases in January 1995. He served as Chief Judge from April 30, 2004, through March 1, 2011. Gov. Haley Barbour appointed him to a vacancy on the Mississippi Supreme Court. He took the oath of office to serve on the Supreme Court on March 1, 2011. He became a Presiding Justice of the Supreme Court on February 1, 2019.

Justice King served in the Mississippi House of Representatives from 1980 through 1994. During his tenure, he was named vice-chairman of the Ways and Means Committee (1988-1991) and vice-chairman of the Conservation and Water Resources Committee (since 1992). Other committees on which he served include: Judiciary, Insurance, Environmental Protection Council, Housing Finance Oversight, and Universities and Colleges. He was chairman of the Mississippi Black Legislative Caucus in 1988. He previously served as Youth Court Counselor for Washington County, Public Defender, Youth Court Prosecutor, and Municipal Court Judge for the Town of Metcalfe.

Justice King and his wife, the former Patricia Smith of Greenville, have two daughters and a granddaughter. They attend the St. Matthew African Methodist Episcopal Church in Greenville.



Associate Justice
Josiah Dennis Coleman
District 3
Place 3

Justice Josiah Dennis Coleman was elected to the Mississippi Supreme Court on Nov. 6, 2012, and began his term on Jan. 7, 2013.

He previously practiced law for 12 years, first in Tupelo, then in Oxford. His practice concentrated on defense litigation and appellate advocacy in the areas of insurance, product liability and professional malpractice. He is admitted to practice before all Mississippi state and federal courts, and before the Fifth U.S. Circuit Court of Appeals.

Justice Coleman is the second member of his family to serve on the Mississippi Supreme Court. Both his grandfather and his father were appellate court judges. He is the grandson of the late J.P. Coleman, who served as Mississippi Governor and on the Fifth U.S. Circuit Court of Appeals. J.P. Coleman also served briefly as a justice of the Mississippi Supreme Court, resigning to accept appointment as state attorney general. Thomas Coleman, the younger Justice Coleman's father, was one of the original members of the Mississippi Court of Appeals when the intermediate appellate court began in 1995.

Justice Coleman grew up in Choctaw County, near Ackerman, and graduated valedictorian from Ackerman High School. He graduated cum laude from the University of Mississippi with a Bachelor of Arts degree in history and philosophy. He earned his law degree from the University of Mississippi School of Law, where he served as treasurer of the Moot Court Board and the Criminal Law Society.

He bagged groceries at the Ackerman Piggly Wiggly in high school, and worked as a dishwasher, camp counselor and life guard while pursuing his undergraduate degree. He worked as a policy research intern in the office of the Secretary of State before starting law school. He served as a summer law clerk at a Tupelo firm. After earning his law degree, he served for almost two years as a law clerk for U.S. Magistrate Judge S. Allan Alexander in Oxford.

He served as a volunteer firefighter on the Toccopola Volunteer Fire Department while he and his family lived in Pontotoc County. He is a former member of the board of deacons at College Hill Presbyterian Church in Oxford, and a member of the board of directors of the non profit organization The International Guest House in Oxford.

He and his wife, Ashleigh Burke Coleman, have three children. They live in Fentress in Choctaw County on a farm that has been worked by seven generations of the Coleman family.



Associate Justice
James D. Maxwell II
District 3
Place 2

Justice James D. Maxwell II of Oxford was appointed by Governor Phil Bryant to the Mississippi Supreme Court on January 1, 2016. He was elected to an eight-year term in November 2016.

Justice Maxwell previously served as a judge on the Mississippi Court of Appeals. He was initially appointed to the appeals court by Governor Haley Barbour on February 2, 2009, then elected in 2010 and re-elected in 2014.

Justice Maxwell earned his undergraduate degree and juris doctor from the University of Mississippi. He practiced civil law in Jackson before returning to Oxford to serve as Assistant United States Attorney for the Northern District of Mississippi.

As a federal prosecutor, he represented the United States Department of Justice in prosecutions and jury trials of public corruption, white collar fraud, money laundering, drug trafficking, immigration, and gang-related crimes. He also handled appeals before the United States Court of Appeals for the Fifth Circuit. He served as Corporate Fraud Coordinator and participated on the Organized Crime Drug Enforcement Task Force. He received various commendations from the Drug Enforcement Administration and the Bureau of Alcohol, Tobacco, Firearms and Explosives.

Justice Maxwell has been elected to a variety of legal positions. He is a past president of the Young Lawyers Division of the Mississippi

Bar Association, the Lafayette County Bar Association, and Tri-County Young Lawyers. He has also served on the Board of Bar Commissioners, the Mississippi Bar Foundation, the Diversity in the Law Committee, and the Board of Directors of the Mississippi Prosecutors Association. He is a graduate of Mississippi Economic Council's Leadership Mississippi program and in 2007 was named "Top 40 Under 40" by the *Mississippi Business Journal*.

Justice Maxwell frequently lectures on appellate and trial advocacy, legal writing, and Mississippi's judicial system. He and his wife, Mindy, have two children, Trip and Mae Covington. The Maxwells are members of First Baptist Church, Oxford.

for the protection of children and families as co-chair of the Commission on Children's Justice and co-chair of the Commission on Guardianships and Conservatorships.

She makes her home in Sumrall. She is a member of Sumrall United Methodist Church in Lamar County.

She is married to Dr. Stephen Beam. They have five children. Justice Beam and her husband are very active in their community.



Associate Justice
Dawn H. Beam
District 2
Place 2

Justice Dawn H. Beam joined the Mississippi Supreme Court on February 16, 2016. Gov. Phil Bryant appointed her to fill the unexpired term of former Justice Randy Pierce. She is the fourth woman to serve on the state's highest court, and the first woman appointed from the Southern District.

Justice Beam, the daughter of a minister, was born in Marks in the Mississippi Delta and as a child lived in numerous communities across the state. She graduated from Caldwell High School in Columbus, Mississippi. She earned a Bachelor of Arts degree in business from the University of Mississippi, and a law degree from the University of Mississippi School of Law. She was admitted to the Mississippi Bar in 1989.

She has spent most of her legal career in the Pine Belt area. She was elected to and served for three years as county prosecutor for Lamar County, and for five years as a chancellor of the Tenth Chancery District, which includes Forrest, Lamar, Marion, Pearl River and Perry counties. Her work as a chancellor and as a county prosecutor included protection of abused and neglected children. After her appointment to the Supreme Court, she continued work



Associate Justice
Robert P. Chamberlin
District 3
Place 1

Justice Robert P. Chamberlin of Hernando joined the Mississippi Supreme Court on Jan. 3, 2017. Justice Chamberlin was elected in a runoff election on Nov. 29, 2016, to an open seat on the Supreme Court.

Justice Chamberlin served for 12 years as a circuit judge of the 17th Circuit District. Then Gov. Haley Barbour appointed him to the 17th Circuit bench on Nov. 24, 2004. The district includes DeSoto, Panola, Tallahatchie, Tate and Yalobusha counties. In 2006 he co founded the 17th Circuit Drug Court with then-Circuit Judge Ann Lamar. He served as chairman and vice chairman of the Conference of Circuit Judges.

He was elected to the Mississippi Senate in 1999, and served Senate District 1 of DeSoto County for five years. He was vice chairman of the Universities and Colleges Committee from 2000 to 2003 as well as chairman of the Elections Committee in 2004. He was selected as Legislator of the Year by the Mississippi Law Enforcement Officers Association in 2003. While serving in the Senate, he attended by invitation the National Security Seminar held at the United States Army War College.

He served as Municipal Court Judge for the City of Hernando from 1991 to 1999. He served as Municipal Prosecutor for the City of Horn Lake in 1992. He also served as a Special Master in Chancery Court. Shortly after he graduated from law school, he went to work for what was to become the Austin Law Firm in Hernando

and later formed Chamberlin Nowak, P.C. He was in private law practice for 14 years, and served as attorney for the DeSoto County Board of Supervisors for four years. He is a member of the American Inns of Court.

Justice Chamberlin graduated from Hernando High School in 1983. He attended Northwest Mississippi Junior College and later graduated from the University of Mississippi with a Bachelor of Arts degree in history. He earned a law degree from the University of Mississippi School of Law in 1990.

Justice Chamberlin is a lifelong resident of north Mississippi and is married to the former Kim White. They have one son, William. They attend the United Methodist Church in Hernando.



Associate Justice
David M. Ishee
District 2
Place 1

Justice David M. Ishee of Gulfport was appointed to the Mississippi Supreme Court by Gov. Phil Bryant. He took the oath of office on September 18, 2017.

He previously served for 13 years on the Mississippi Court of Appeals, having first been appointed in September 2004 by Gov. Haley Barbour.

Justice Ishee was born in Gulfport, Mississippi, in 1963. He graduated from the University of Southern Mississippi in 1985 with a Bachelor of Science Degree in History. He also attended the University of London and received his Juris Doctorate from the University of Mississippi School of Law.

Upon graduation from Ole Miss, he entered private law practice with his late father-in-law, Elmo Lang of Pascagoula, Mississippi. He practiced for almost 14 years in the law firm of Lang and Ishee. During that time, he was involved in extensive litigation in civil, criminal, and domestic-relations law. He was appointed by the Circuit Court judges of the Second and Nineteenth Districts to head four death penalty defense teams and was lead counsel on numerous appeals and oral arguments before

the Mississippi Supreme Court. He also served as board attorney for the Gulf Coast Regional Waste Water Authority from 1992 to 1996.

While living in Jackson County, he served on the Jackson County Republican Executive Board, was chairman of the 1992 Jackson County Republican Convention, and was a delegate to the 1992 Mississippi State Republican Convention.

In 1993, at the age of 29, he was appointed Municipal Court Judge for the City of Pascagoula. He was re-appointed for a second term in 1996. During this time, he also served one year as interim Municipal Court Judge for the City of Ocean Springs, and was Judge Pro Tem for the Jackson County Youth Court, where he presided over numerous child custody hearings as well as hearings involving abused and delinquent children. He was appointed Municipal Court Judge for the City of Gulfport in October 1999.

He joined the law firm of Franke, Rainey and Salloum, PLLC, in 2002, where he represented local hospitals in medical malpractice cases and numerous businesses in general insurance defense.

Justice Ishee is admitted to and has extensively practiced in all federal and state courts in the State of Mississippi, and is admitted to practice in the United States Court of Appeals for the Fifth Circuit. He has served as president of the Jackson County Young Lawyers Division, and secretary, vice-president and president of the Jackson County Bar Association. In addition to his participation on numerous committees of the Mississippi Bar, he was appointed as president of its Historical Preservation Committee.

He was appointed by the Chief Justice of the Mississippi Supreme Court to chair the Criminal Section of the Model Jury Instructions Revision Committee, which revised the Criminal Model Jury Instructions for the Circuit Courts of Mississippi. He has also served as a special Circuit Court Judge and Chancellor in numerous counties by appointment of the Mississippi Supreme Court.

Justice Ishee has served as President of the Southern Mississippi Law Constituent Society since 2010 and is a member of the Law Alumni Board of Directors for the University of Mississippi School of Law. He was inducted into the University of Southern Mississippi Alumni Hall of Fame in 2014, and as a Fellow of the Mississippi Bar in 2016.

He teaches business law and professional ethics at the University of Southern Mississippi Gulf Coast Campus. He is also an adjunct professor at both the University of Mississippi School of Law and Mississippi College School of Law, where he teaches criminal litigation and trial practice. He previously served as an adjunct professor at Mississippi Gulf Coast Community College.

He is a member of Trinity United Methodist Church, where he has been the conference delegate to the Mississippi Methodist Conference for eight years, and serves as an usher and a staff Parish Committee member.

He is married to the former Linda Lang of Pascagoula. They have one daughter, Lauren. Justice Ishee is the son of Mrs. Doris Ishee of Gulfport and the late Representative Roger Ishee.



Associate Justice
Kenny Griffis
District 1
Place 1

Judge Kenny Griffis was appointed as an Associate Justice of the Mississippi Supreme Court on February 1, 2019. He previously served as Chief Judge of the Mississippi Court of Appeals, and as a Presiding Judge. He was a member of the Court of Appeals for 16 years.

Judge Griffis is a native of Meridian, Mississippi. He earned accounting and law degrees from

the University of Mississippi. He attended Meridian Community College and Mississippi State University – Meridian Branch. He was a Certified Public Accountant from 1984 through 2007.

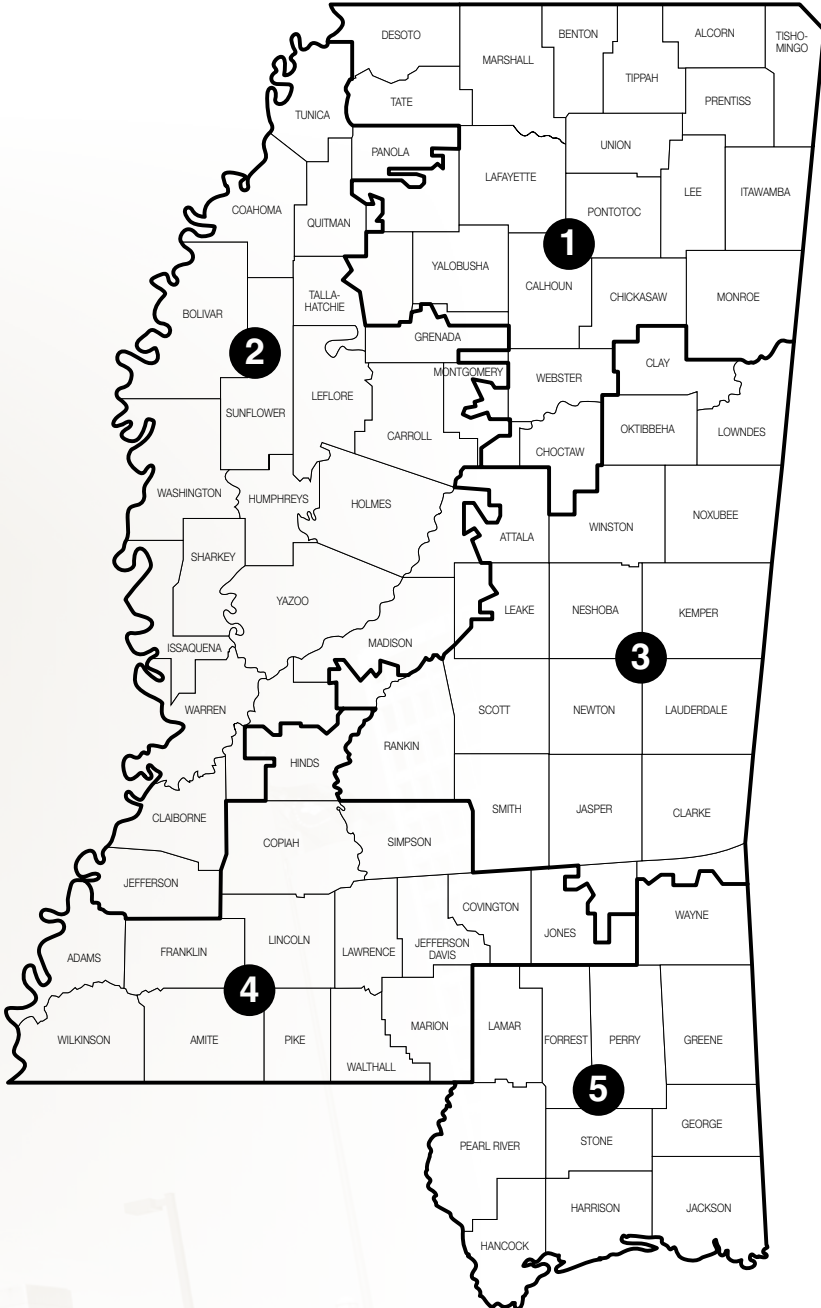
Judge Griffis is admitted to practice law before the United States Supreme Court, the Fifth Circuit Court of Appeals, the United States District Courts of the Northern and Southern Districts of Mississippi, and all Mississippi state courts. He is a member of The Mississippi Bar, the Magnolia Bar Association, the Madison County Bar Association, the Capital Area Bar Association, and the Rankin County Bar Association. Judge Griffis is also a member of the Downtown Jackson Rotary Club and is a Paul Harris Fellow.

Judge Griffis currently serves as a member of the Mississippi Supreme Court’s Committee on Continuing Judicial Education. He has also served on the Supreme Court’s Advisory Committee on the Civil Rules, as Chair of the Bench Bar Committee of The Mississippi Bar, and the Committee on Electronic Filing and Case Management Systems. Judge Griffis serves as adjunct professor at the Mississippi College School of Law and the University of Mississippi School of Law.

Judge Griffis and his wife, Mary Helen, are the parents of five boys. They live in Ridgeland and attend Christ United Methodist Church. Judge Griffis has served as a youth Sunday School teacher, a Cub Scout leader, and a coach for over 80 youth sports teams, including baseball, basketball, soccer, and hockey.



MISSISSIPPI COURT OF APPEALS DISTRICTS



MISSISSIPPI COURT OF APPEALS JUDGES

(601) 576-4665/f(601) 576-4708



Donna M. Barnes, Chief Judge
Judicial Assistant: Katherine Frye
Phone: (601) 576-4671

Anthony N. Lawrence III, Judge
Judicial Assistant: Megan Cloud
Phone: (601) 576-4654

Virginia C. Carlton, Presiding Judge
Judicial Assistant: Bea Ratcliffe
Phone: (601) 576-4645

David Neil McCarty, Judge
Judicial Assistant: Sonja Crump
Phone: (601) 576-4678

Jack L. Wilson, Presiding Judge
Judicial Assistant: Lesa Whities
Phone: (601) 576-4712

Joel Smith, Judge
Judicial Assistant: Heather Graves
Phone: (601) 576-4714

Jim M. Greenlee, Judge
Judicial Assistant: Vera Johnson
Phone: (601) 576-4643

John H. Emfinger, Judge
Judicial Assistant: Courtney Landrum
Phone: (601) 576-4673

Latrice A. Westbrooks, Judge
Judicial Assistant: Susie Robinson
Phone: (601) 576-4680

Deborah A. McDonald, Judge
Judicial Assistant: Wanda Zambrano
Phone: (601) 576-4644



Chief Judge
Donna M. Barnes
District 1
Position 2

Court of Appeals Chief Judge Donna M. Barnes of Tupelo was appointed by Governor Haley

Barbour on July 26, 2004, to a vacancy on the Court. She was elected in November 2006, and re-elected in November 2010 and November 2018. She became Chief Judge of the Court of Appeals on February 1, 2019. She is the first woman Chief Judge of the Court of Appeals.

Born in Natchez, Judge Barnes earned a Bachelor of Arts degree in 1982 from the University of Mississippi, *summa cum laude*, with majors in classical civilizations and English. Judge Barnes obtained her Juris Doctor from the University of Mississippi School of Law, where she graduated *magna cum laude* in 1985. She was a member of Phi Delta Phi legal fraternity and a research editor of *Mississippi Law Journal*. Judge Barnes is a member of the University of Mississippi Lamar Order.

For more than 18 years, Judge Barnes practiced law with Mitchell, McNutt and Sams in Tupelo with concentrations in appellate practice, real estate, health care, employment discrimination, Section 1983 litigation and professional liability defense.

In 1996, she took sabbatical to study law at the University of Cambridge, where she was one of three American students in the LL.M. program which that year admitted 152 attorneys from 48 countries. Her studies included international commercial litigation, comparative public law, international human rights, and law and practice of civil liberties. A member of Magdalene College, Judge Barnes earned her Master of Law from the University of Cambridge in 1997.

Admitted to the practice of law in Mississippi in 1985, Judge Barnes is qualified to practice before the United States Supreme Court, the United States Court of Appeals for the Fifth Circuit, the United States District Courts for the Northern and Southern Districts of Mississippi, and all Mississippi state courts. She is a member of the Mississippi Bar and the Lee County Bar Association. She has served as president of both

the Lee County Bar Association and the Lee County Young Lawyers Association.

Judge Barnes was honored as the 2019 recipient of the Susie Blue Buchanan Award. The annual award, presented by the Mississippi Bar's Women in the Profession Committee, honors an outstanding woman lawyer who has achieved professional excellence and has actively paved the way to success for other women lawyers.

She is a fellow of the Mississippi Bar Foundation and a member of the Criminal Code Revision Consulting Group. She is a former member of the Mississippi Access to Justice Commission and the Judicial Advisory Study Committee.

Judge Barnes is a member of All Saints Episcopal Church and the Mary Stuart Chapter, Daughters of the American Revolution, both of Tupelo.



Presiding Judge
Virginia Carlton
District 4
Position 1

Judge Virginia Carlton has served as a Judge on the Mississippi Court of Appeals since January

2007. She is a Presiding Judge. Judge Carlton participates in approximately 450 cases a year and authors approximately 40-50 majority opinions a year, in addition to numerous separate opinions. The Court also determines approximately 1700 motions a year.

In addition to her current service on the Mississippi Court of Appeals, Judge Carlton has served our state and nation in various other capacities over the course of her career. She formerly held elected office as State Representative for Mississippi House District 100 from January 1, 2004 – December 2006. She also served as an assistant district attorney, county public defender, U.S. Army JAG officer, Command and General Staff College Instructor, USAR military trial judge, USAR military appellate judge, and as a Mississippi Supreme Court law clerk.

As an Army JAG officer, Judge Carlton served the Army in a variety of legal positions over the years including prosecutor, defense counsel, deputy staff judge advocate, staff judge

advocate, and Special Assistant U.S. Attorney for the Army in Hawaii. She was merit selected to serve as a military trial judge in the USAR. She was subsequently selected to serve as an associate USAR military appellate judge on the U.S. Army Court of Criminal Appeals, where she participated in approximately 90 cases and served as lead judge in 40 cases. Carlton's 24 years of total military service is unique in that it includes active, reserve and National Guard duty.

Upon retirement from the military in February 2015, Judge Carlton held the rank of Colonel and had served for more than 24 years. Colonel Carlton was awarded the following military awards and medals: Legion of Merit; Meritorious Service Medal (7th Award); Army Commendation Medal (4th Award); Army Reserve Component's Achievement Medal (3rd Award); National Defense Service Medal; Global War on Terrorism Service Medal; Army Service Ribbon; Overseas Service Ribbon (1); and Armed Forces Reserve Medal (with M Device and with 10 year device). She was also awarded a foreign badge, the German Sports Medal, during her tour of duty in Germany. Upon her retirement, she was also awarded the Magnolia Cross by the Governor of Mississippi.

Judge Carlton hails from Columbia, Mississippi, and she currently resides in Jackson, Mississippi. She attended the University of Mississippi for her undergraduate and law school education. She received her B.B.A. degree in 1986 and earned her Juris Doctorate degree in 1989. As an undergraduate, she served in the campus senate and was a member of the Chi Omega sorority, Tau chapter. She also served in many organizations during law school including the Mississippi Law Journal, the Moot Court Board and its Executive Board, and clerk of Mays Inn of Phi Delta Phi legal fraternity. She continued her professional education in the military and is now also a graduate of the U.S. Army Command and Staff College and a graduate of the U.S. Army War College. She holds a Master Degree of Strategic Studies.

Judge Carlton actively contributes to the bench and bar. She is a member of the Mississippi Judicial College Board of Governors. She has served on the Mississippi Children's Justice Commission, the Mississippi Supreme Court Rules Advisory Committee, and the Mississippi Access to Justice Commission. She has also

served on various other study commissions and advisory groups. Additionally, she previously served as an adjunct professor at Mississippi College School of Law and at Belhaven College. She is a member of the following organizations: Charles Clark Inn of Court; North Jackson Rotary Club; past Secretary of the Jackson Prep performing arts booster club ("Applause Board"); Chi Omega Sorority Jackson Metro Area Alumni Association; and past Jackson Symphony League Ball Chair. She also previously served as a board member of the Tri-Community Fire Department and as a member of the Junior Auxiliary Club in Marion County. Judge Carlton often teaches continuing education classes at the request of the MS Bar, the MS Judicial College, and other organizations.

Judge Carlton is admitted to practice in Mississippi and before the U.S. Supreme Court, the Army Court of Criminal Appeals, and the U.S. Court of Appeals for the Armed Forces. She is a member of the Mississippi and American Bar Association. In 2012, she was honored by being selected as a fellow of the Mississippi Bar Association. In 2010, she was named one of the top 50 women in business by the Mississippi Business Journal, and in 2013, as a woman of the year by the Mississippi Commission for the Status of Women for her military service. When serving as a State Representative, Judge Carlton was named Outstanding Legislator for Juvenile Justice and the Mississippi Association of Adult & Community Education named her "2004-2006 South Mississippi Friend of Adult Education."

Judge Carlton is married to Dr. Scott Carlton, a family physician and Colonel in the Mississippi Army National Guard. The Carltons have three children – Rachel, a chemical engineer, Harrison Read, an electrical engineer, and Phoebe, a college freshman.



**Presiding Judge
Jack L. Wilson**
*District 3
Position 1*

Presiding Judge Jack L. Wilson of Madison was appointed to the Court of Appeals by Gov. Phil

Bryant on July 1, 2015. He was elected to an eight-year term in November 2016.

Judge Wilson grew up in Jackson and Tupelo and graduated from Tupelo High School. He attended the University of Memphis, earned a Bachelor of Accountancy from the University of Mississippi, and received a Juris Doctor from Harvard Law School, where he was an editor of the Harvard Law Review. After law school, he clerked for Judge Gerald Bard Tjoflat of the U.S. Court of Appeals for the Eleventh Circuit.

Judge Wilson previously practiced law with the firms of Bradley Arant Boult Cummings LLP in Jackson, Miss., and Mayer Brown LLP in Washington, DC. His practice focused on appellate litigation and general civil litigation involving a variety of subject matters including business and commercial disputes, class and collective actions, and arbitrations. He represented clients in state and federal trial and appellate courts throughout the country, including the U.S. Supreme Court. Judge Wilson also served as Deputy Counsel and later Chief Counsel to Gov. Phil Bryant.

He is admitted to practice in all state and federal courts in Mississippi; in the District of Columbia; in the U.S. Courts of Appeals for the Fifth, Seventh, and Eleventh Circuits; and in the U.S. Supreme Court. He previously served as a commissioner on the Uniform Law Commission, as a member of the Board of Trustees of the Mississippi Public Employees Retirement System, and as president of the Mississippi Lawyers Chapter of The Federalist Society. He has also served as an adjunct instructor at the Mississippi College School of Law.

Judge Wilson and his wife, Amanda, have four children, Emily, Jack, Henry and Katherine. They live in Madison, where they are active members of Pear Orchard Presbyterian Church.



**Judge
Jim M. Greenlee**
*District 1
Position 1*

Judge Jim Ming Greenlee was born and raised in Batesville, Mississippi. He joined

the Mississippi Court of Appeals on Jan. 20, 2016, upon his appointment by Gov. Phil Bryant to serve through December of 2016. Judge Greenlee was elected in November 2016 to continue his service on the Court through December of 2022.

Judge Greenlee previously served as United States Attorney for the Northern District of Mississippi from 2001 to 2010. As U.S. Attorney, he led that office which prosecuted public corruption cases, judicial influence cases, major drug distribution networks, violent gun crime cases and assisted in the cold case investigation of the murder of Emmett Till. As U. S. Attorney, he served on the Advisory Committee to the Attorney General of the United States.

His service with the U.S. Department of Justice spanned 22 years. He was an assistant U. S. Attorney in the Civil Division of the U. S. Attorney's office from 1987 until 2001. He became the lead civil fraud attorney, trying bankruptcy, tort, employment rights, eminent domain, and white-collar criminal cases. Greenlee was in the private practice of law in Southaven from 1981 to 1987, and in Oxford from 2010 to 2016.

Judge Greenlee graduated from South Panola High School in 1970. Having been awarded a Navy ROTC Scholarship, he earned his Bachelor of Engineering degree from the University of Mississippi in 1974. He served on active duty in the U. S. Navy from 1974 to 1978. Returning to Ole Miss, he studied at the Law School, receiving his Juris Doctor in 1981. Greenlee served in the U.S. Navy Reserve until 1997, retiring at the rank of Captain, USN.

He is the son of the late Thomas S. and Margaret "Bill" Greenlee of Batesville. His wife is the former Ann Veazey of Coldwater. Ann and Jim have two daughters, Veazey and Taylor, two sons-in-law, Andy Hillmer and Jeff Kilgore, and four grandchildren. Ann and

Jim are members of Oxford University United Methodist Church where Jim teaches an adult Sunday School class.



**Judge
Latrice A. Westbrooks**
*District 2
Position 2*

Judge Latrice Westbrooks was sworn in as a member of the Mississippi Court of

Appeals on Jan. 3, 2017. She was elected Nov. 8, 2016, to Court of Appeals District 2, Position 2.

Judge Westbrooks was born in Memphis, Tennessee. She earned a Bachelor of Science degree from Austin Peay State University in Clarksville, Tenn. She earned a law degree from the University of Detroit Mercy School of Law in 1997. She was admitted to the Mississippi Bar that same year.

She became an assistant district attorney in the Second Circuit District of Harrison, Hancock and Stone counties in October 1997. She was the first African American woman assistant district attorney in the Second Circuit District. She joined the Jackson law firm of Byrd and Associates in 2000, then opened her own law practice in 2001, representing clients in both criminal and civil matters.

She served as prosecutor for the city of Durant and as city attorney for the town of Isola. For almost 10 years, she served as a public defender in Holmes County. In 2013, she became interim communications director for Jackson Mayor Chokwe Lumumba, then joined the Jackson City Attorney's office as legal counsel for the Jackson Police Department. She returned to private law practice in 2014. She served as Municipal Judge for the city of Lexington before she was elected to the Court of Appeals.

Judge Westbrooks was named Outstanding Woman Lawyer of 2017 by the Mississippi Women Lawyers' Association.

She has worked in conjunction with the Magnolia Bar Association, One Voice, the NAACP, the Mississippi Center for Justice, the Southern Poverty Law Center's Mississippi Youth Justice Project and the ACLU. She served as a Southeast Regional and Central Director of the Magnolia Bar Association. She previously

chaired the Criminal Justice Committee for the State Conference of the NAACP. She is a member of the Mississippi Bar, Magnolia Bar Association, American Bar Association, National Bar Association, the National Conference of Black Lawyers, the Capital Area Bar Association and the Metro Jackson Black Women Lawyers Association. She is a member of Alpha Kappa Alpha Sorority, Inc., as well as a life member of the NAACP. She is a former member of the Mississippi Association for Justice and the Mississippi Public Defenders Association. She is a past board member of Leadership Greater Jackson Alumnae, the I.S. Sanders YMCA, and the National African American Student Leadership Conference.

Judge Westbrooks is a resident of Lexington, Mississippi. She is a member of Cade Chapel M.B. Church.



**Judge
Deborah A. McDonald**
*District 2
Position 1*

Mississippi Court of Appeals Mississippi Court of Appeals Judge Deborah McDonald was elected

Nov. 27, 2018, and began her judicial term on Jan. 7, 2019.

Judge McDonald began her legal career as an attorney representing the poor at the former Southwest Mississippi Legal Services in McComb. She worked for Legal Services for nine years, serving as staff attorney, managing attorney and executive director. She entered private law practice in 1991. Her private practice areas included civil rights, employment discrimination, consumer law, personal injury, product liability and family law. She did extensive work in voting rights litigation, including legislative redistricting.

She served as Fayette Municipal Judge for 23 years. She was attorney for Jefferson County Hospital and Jefferson County Nursing Home for 24 years. She was attorney for the city of Port Gibson for almost seven years, and represented the Hazlehurst School District for three years.

Judge McDonald grew up in Fayette and graduated from Jefferson County High School.

She is a graduate of Alcorn State University, where she studied social science education. She earned her Juris Doctor from the University of Mississippi School of Law, where she served on the Moot Court Board. She is admitted to practice before all state and federal courts of Mississippi and the U.S. Supreme Court.

She has one adult son, Tahrir McClellan of Jackson. She is a member of East Mount Olive MB Church in Lorman.



Judge
Anthony N. Lawrence III
District 5
Position 1

Judge Anthony N. “Tony” Lawrence III was born in Pascagoula, Mississippi, on April 3, 1965. He is the son of Anthony and Darla Lawrence of Pascagoula.

He graduated from Our Lady of Victories High School in 1983. He attended the University of Southern Mississippi, receiving a Bachelor of Science degree in history and a minor in political science in 1987. He attended the University of Mississippi School of Law, receiving his Juris Doctor degree in 1990. He was admitted to the practice of law in Mississippi that same year. He also is admitted to practice law in all courts in the state of Alabama.

Judge Lawrence began his practice in a general litigation firm and tried civil lawsuits in both Mississippi and Alabama. He served as an Assistant District Attorney from 1996 to 1999 in the Nineteenth Circuit Court District and as a Special Prosecutor in other Circuit Court districts in the State of Mississippi. He joined the law firm of Colingo, Williams, Heidelberg, Steinberger & McElhaney on September 20, 1999, and practiced primarily in the area of medical malpractice defense.

He was elected District Attorney for Jackson, George, and Greene counties in November 2003, and was reelected in 2007, 2011 and 2015. In November 2018, he was elected without opposition to the Mississippi Court of Appeals. He took the oath of office on January 7, 2019.

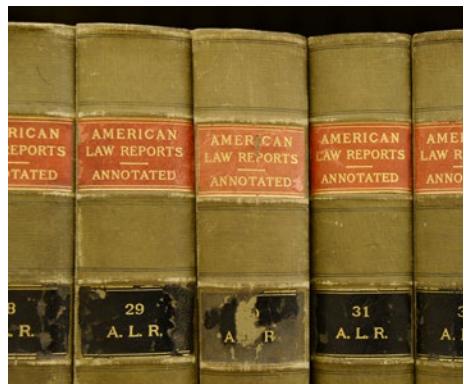
Judge Lawrence is a member of the Mississippi Bar, Alabama Bar, and the Jackson County

Bar. He has served as Special Judge in the Jackson County Youth Court. He served as Mississippi Prosecutors Association vice-president and president-elect, and was president 2011-2012. He served on the Mississippi Prosecutors Association Board of Directors for nine years and was co-chair of the Legislative Action Committee. In that role, he assisted in the passage of legislation aimed at preventing child abuse (Lonnie Smith Act), and establishing degrees of murder, charges of accessory after the fact to murder, and attempted murder. He worked to pass legislation authorizing the creation of more assistant district attorney positions across the state.

He was appointed by Governor Haley Barbour to serve on the Children’s Justice Act Task Force and was appointed by Governor Phil Bryant to the Judicial Appointment Governor’s Advisory Committee and the Governor’s Teen Pregnancy Task Force. He has been an Adjunct Instructor of Criminal Investigations at Mississippi Gulf Coast Community College – Jackson County Campus and the University of Southern Mississippi at the Long Beach campus.

He served as president of the Singing River Soccer Club, and was a founding officer in the Mississippi Coast Futbol Club. He coached youth sports for approximately 27 years and served as coach for the Resurrection High School Varsity Girls Soccer Team for eight years and as head coach for Resurrection Varsity Boys Soccer Team for five years. He coached the Resurrection High School mock trial team for more than 15 years.

He is married to Anita Lawrence, the former Anita Williamson, and they have two children, Taylor, 28, and Bay, 24. They attend Our Lady of Victories Catholic Church in Pascagoula.





**Judge
David Neil McCarty**
*District 4
Position 2*

Mississippi Court of Appeals Judge David Neil McCarty was elected Nov. 27, 2018, and took the

oath of office on Jan. 7, 2019.

Before he was elected to the Court of Appeals, he was a solo practitioner who focused on appeals and complex litigation. He was counsel in more than 80 state and federal appeals. He presented oral argument more than 30 times before the Mississippi Supreme Court, the Court of Appeals of Mississippi, the Fifth U.S. Circuit Court of Appeals, and the Eighth U.S. Circuit Court of Appeals.

Since 2005, he has been an adjunct professor at Mississippi College School of Law, where he has taught courses in trial practice, evidence, pretrial practice, appellate advocacy, and legal writing. He was honored as the Adjunct Professor of the Year for 2016-17. Judge McCarty is the author of the Evidence chapter of the Encyclopedia of Mississippi Law, and is a contributing author to the treatise Mississippi Civil Procedure. He also regularly presents continuing legal education topics on appellate advocacy and ethics.

Judge McCarty helped co-found the Appellate Practice Section of the Mississippi Bar, and from 2014 to 2015 was chair of the Section. In 2013, he was recognized by the *Mississippi Business Journal* as one of the state's 50 Leading Attorneys. He is a Barrister in the Charles Clark Inn of Court.

He earned his J.D. from Mississippi College School of Law in 2004, graduating cum laude. He was Articles Editor on the Law Review and Competition Chair of the Moot Court. He previously received a B.A. in political science from Mississippi State University.

Judge McCarty served as law clerk to former Mississippi Supreme Court Presiding Justice James E. Graves, Jr., who is now a member of the Fifth U.S. Circuit Court of Appeals. He also served as law clerk for former Presiding Justice Oliver E. Diaz, Jr.

Judge McCarty was born in Sandusky, Alabama. He lives in Jackson, Mississippi.



**Judge
Joel Smith**
*District 5
Position 2*

Judge Joel Smith of Gulfport was appointed to the Mississippi Court of Appeals and took

the oath of office on Jan. 19, 2021. Gov. Tate Reeves appointed Judge Smith to the position previously held by Sean Tindell.

Before his appointment to the bench, Smith served for 20 years as a prosecutor in the Second Judicial District of Harrison, Hancock and Stone counties. He was an assistant district attorney for 11 years and became trial division leader. He was elected as District Attorney in 2011 after longtime District Attorney Cono Caranna announced that he would retire. Smith took office in January 2012. He was in his third term as District Attorney when he was appointed to the bench. Smith practiced corporate defense and premises liability litigation with the firm of Bryant, Clark, Dukes & Blakeslee before joining the District Attorney's office.

He is past president of the Mississippi Prosecutors Association, served as a member of the Executive Committee of the Prosecutors Section of the Mississippi Bar and was a member of the National District Attorneys Association. He is vice-chair of the Mississippi Children's Justice Act Task Force and was appointed by the Governor to serve on the Mississippi School Safety Task Force. He served on the Mississippi Corrections and Criminal Justice Oversight Committee and on the Governor's 2020 search committee to find a new commissioner for the Department of Corrections. He served as an instructor with the U.S. Navy Sexual Assault Intervention Training Program, the Southern Regional Public Safety Institute and the Harrison County Law Enforcement Academy.

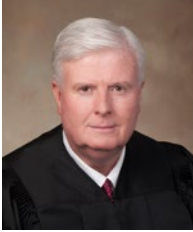
He served as President of the Leadership Gulf Coast Board of Trustees and was a member of the Board of Directors of the Coast Chamber of Commerce. He was a member of the Gulf Coast Business Council.

He was admitted to the Mississippi Bar in 1999. He is admitted to practice in all state and federal courts in Mississippi.

He is a native of Gulfport and a graduate of

Gulfport High School. He earned a Bachelor of Arts degree in history from the University of Mississippi in 1996 and a Juris Doctor from the University of Mississippi School of Law in 1999.

He and his wife, Courtney, have three children. They attend First Baptist Church of Gulfport.



Judge
John H. Emfinger
District 3
Position 2

Judge John H. Emfinger of Brandon was appointed to the Mississippi Court of

Appeals and took the oath of office on March 3, 2021. Gov. Tate Reeves appointed Judge Emfinger to the position previously held by Judge Cory Wilson.

Judge Emfinger served for more than 10 years as a Circuit Judge of the 20th Circuit Court District of Rankin and Madison counties. He served on the Commission on Judicial Performance, the Mississippi Supreme Court Advisory Committee on Rules and the Criminal Code Revision Consulting Group. He is a former chairman, vice-chair and secretary treasurer of the Conference of Circuit Judges.

He served for 12 years as an assistant district attorney for the 20th District, serving at three different times between 1988 and 2010. He served for nearly 10 years as a special assistant attorney general, serving at three different times between 1983 and 1997. He worked in the Criminal Division preparing appellate briefs; in the State and Local Government Section handling criminal appeals, AG opinions, elections and Voting Rights Act submissions and litigation; and later as director of the Public Integrity Division, where he supervised investigation and prosecution of public corruption, white collar crime, voter fraud and large scale drug operations. He worked for a year as Assistant Secretary of State and staff attorney in the Securities Division of the office of the Mississippi Secretary of State. He was in private law practice for about seven years. His practice areas included oil and gas law, domestic relations and criminal defense.

He is a former member of Mississippi Prosecutors Association and is a member of the Mississippi Bar, the Alabama State Bar, the American Bar Association, American Inns of Court, the Madison County Bar Association and the Rankin County Bar Association.

He earned a Bachelor of Science degree in political science and a Masters of Business Administration from Mississippi College and a law degree from Mississippi College School of Law.

Judge Emfinger was born in 1955 in Langdale, Alabama. He is married Susan J. Emfinger. They have three daughters and four grandchildren.

He is a member of First Baptist Church of Brandon. He has served as a coach and board member of various youth sports organizations.



SENIOR STATUS JUDGES

Nathan P. Adams, Jr.	P.O. Box 2697, Madison 39130.....	(662) 820-0428
<i>Retired Chancery Judge</i>		
William (Bill) Agin	P.O. Box 577, Madison 39130	(601) 331-2333
<i>Retired County Court Judge</i>		
Thomas W. Allen	3840 Hwy. 6, Lyon 38645.....	(662) 902-5877
<i>Retired County Court Judge</i>		
William E. Andrews III	P.O. Box 130, Purvis 39475	(601) 408-3899
<i>Retired County Court Judge</i>		
Mills Barbee	2430 Caffey St., Hernando 38632	(901) 212-3934/f(662) 580-4591
<i>Retired County Court Judge</i>		
William Barnett	2248 Sheffield Dr., Jackson 39211	(601) 981-8705/c(601) 946-5333
<i>Retired County Court Judge</i>		
Jon M. Barnwell	505 W. President Ave., Greenwood 38930	(662) 299-9070/c(662) 897-7978
<i>Retired Chancellor</i>		
James D. Bell	318 S. State St., Jackson 39201.....	(601) 981-9221/(601) 906-9119
<i>Retired County Court Judge</i>		
Jaye A. Bradley	2248 Hwy. 612, Lucedale 39452	(601) 550-4547
<i>Retired Chancery Court Judge</i>		
Charles R. Brett	265 Little Harpe Trail, Slatton 38866	(662) 891-1988
<i>Retired County Court Judge</i>		
Larry Buffington	P.O. Box 924, Collins 39428	(601) 765-7374/(601) 765-8944
<i>Retired Chancellor</i>		
Kenneth M. Burns	P.O. Box 110, Okolona 38860	(662) 401-0809
<i>Retired Chancery Court Judge</i>		
David Chandler	5184 N. Columbus Ave., Louisville 39339.....	(662) 285-7127
<i>Retired supreme Court Justice</i>		
H. David Clark II	510 Wales Way, Flowood 39232	(769) 274-8830
<i>Retired Chancery Court Judge</i>		
Kay Cobb	P.O. Box 604, Oxford 38655-0604.....	(662) 816-9316
<i>Retired Supreme Court Justice</i>		
R. Kenneth Coleman	P.O. Box 1995, New Albany 38652	(662) 316-2636
<i>Retired Circuit Court Judge</i>		
Dorothy W. Colom	P.O. Box 708, Columbus 39701	(662) 251-8506
<i>Retired Chancery Court Judge</i>		
Vernon R. Cotten	205 Main St., Carthage 39051	(601) 954-2502
<i>Retired Circuit Court Judge</i>		
H. J. Davidson, Jr.	1020 7 th St. N., Columbus 39701	(662) 425-2861
<i>Retired Chancery Court Judge</i>		
Oliver E. Diaz, Jr.	1 Carlyle Pl., Jackson 39216-3744	(601) 944-1008
<i>Retired Supreme Court Justice</i>		
Jess H. Dickinson	126 Wildwood Dr., Madison 39110	(228) 596-6633
<i>Retired Supreme Court Justice</i>		
M. Ronald Doleac	105 Wildwood Trace, Hattiesburg 39402	(601) 467-3143
<i>Retired Chancery Court Judge</i>		
Timothy E. Ervin	901 8 th Ave. N., Amory 38821-2506.....	(662) 791-1309
<i>Retired Chancery Court Judge</i>		
Edward C. Fenwick	208 S. Madison St., Kosciusko 39090.....	(601) 416-1063
<i>Retired Chancery Court Judge</i>		
James B. Floyd III	4773 Sunningdale Dr., Belden 38826.....	(662) 844-4597/c(662) 401-2903
<i>Retired County Court Judge</i>		
Barry W. Ford	130 Sunflower Rd., Madison, MS 39110.....	(601) 750-7200
<i>Retired Circuit Court Judge</i>		
Beverly M. Franklin	408 4 th St. S., Columbus 39701	(662) 574-6998
<i>Retired County Court Judge</i>		

Janace H. Goree <i>Retired Chancellor</i>	3726 Bend Rd., Vaughan 39179	(601) 278-1722/f(662) 673-0093
William A. Gowan <i>Retired Circuit Court Judge</i>	309 Hoy Farms Dr., Madison 39110	(601) 260-5399
John S. Grant <i>Retired Chancery Court Judge</i>	699 Spring Lake Dr., Pearl 39208	(601) 951-3010
John A. Hatcher <i>Retired Chancery Court Judge</i>	101 Parkwood Garden., Booneville 38829	(662) 720-2242
Hicks G. Hosemann <i>Retired County Court Judge</i>	3177 Bovinia Cut Off Rd., Vicksburg 39180	(713) 205-5124
Andrew K. Howorth <i>Retired Circuit Court Judge</i>	810 Lincoln Ave., Oxford 38655	(662) 801-4004
John N. Hudson <i>Retired County Court Judge</i>	P.O. Box 545, Natchez 39121	(601) 807-5837
Forrest A. Johnson <i>Retired Circuit Court Judge</i>	211 S. Commerce St., Natchez 39120	(601) 431-9844
Robert L. Lancaster <i>Retired Chancellor</i>	P.O. Box 884, Columbus 39703-0884	(662) 327-4026/(662) 425-4014
Billy Joe Landrum <i>Retired Circuit Court Judge</i>	2102 Hwy. 15 S., Ovet 39464	(601) 428-4460/(601) 319-5599
L. Joseph Lee <i>Retired Court of Appeals Judge</i>	200 Bellewood Dr., Brandon 39042	(601) 954-1338
William J. Lutz <i>Retired Chancellor</i>	602 Steed Rd., Ridgeland 39157	(601) 499-0692
Richard McKenzie <i>Retired Circuit Court Judge</i>	P.O. Box 1403, Hattiesburg 39403	(601) 544-1008
Michael W. McPhail <i>Retired County Court Judge</i>	P.O. Box 1782, Hattiesburg 39401	(601) 270-9365
Charles R. McRae <i>Retired Supreme Court Justice</i>	P.O. Box 33, Jackson 39205	(601) 354-4662
Clarence R. Morgan III <i>Retired Circuit Court Judge</i>	234 Highland Park Dr., Birmingham, AL 35242	(601) 416-7524
Isadore Patrick <i>Retired Circuit Court Judge</i>	112 Moonmist Dr., Vicksburg 39183	(601) 618-8677
Edward E. Patten, Jr. <i>Retired Chancery Court Judge</i>	234 S. Extension St., Hazlehurst 39083	(769) 257-2184
Lamar L. Pickard <i>Retired Circuit Court Judge</i>	P.O. Box 310, Hazlehurst 39083	(601) 946-9969
James "Jim" S. Pounds <i>Retired Circuit Court Judge</i>	101 Foster Park, Booneville 38829	(662) 415-1587
John S. Price, Jr. <i>Retired County Court Judge</i>	4055 Tucker Rd., Vicksburg 39183	(601) 529-5132/(601) 638-5132
Samac S. Richardson <i>Retired Circuit Court Judge</i>	109 Deletha Ln., Brandon 39042	(601) 825-3363/c(601) 826-3400
Larry E. Roberts <i>Retired Court of Appeals Judge</i>	P.O. Box 1002, Meridian 39202	(601) 490-0768
Betty W. Sanders <i>Retired Circuit Court Judge</i>	107 Kimbrough St., Greenwood 38930	(662) 453-8703
Stephen B. Simpson <i>Retired Circuit Court Judge</i>	P.O. Box 2307, Gulfport 39505	(228) 206-7174
William Singletary <i>Retired Chancery Court Judge</i>	301 W. Lawson St., Clinton 39056	(601) 946-9801
Patricia D. Beckett Sims <i>Retired County Court Judge</i>	5013 Par Dr., Flower Mound, TX 5028	N/A
William L. Skinner II <i>Retired County Court Judge</i>	205 Huntly Dr., Raymond 39154	(601) 372-5722/c(601) 213-6168
James W. Smith, Jr. <i>Retired Supreme Court Justice</i>	Ogden & Associates, 500 E. Capitol St., Ste. 3, Jackson 39201	(601) 969-0999

JUDICIAL

Sandford (Sandy) StecklerP.O. Box 485, Biloxi 39533 (228) 424-6885
Retired Chancellor

Gwendolyn J. ThomasP.O. Box 1509, Cleveland 38732 (662) 402-4608
Retired County Court Judge

Kenneth L. ThomasP.O. Box 1509, Cleveland 38732 (662) 843-4608/(662) 719-3539
Retired Circuit Court Judge f(662) 843-6308

John White Valentine 1215 Farmer St., Cleveland 38732 (662) 843-3061
Retired County Court Judge

Kosta N. VlahosP.O. Box 7575, Gulfport 39506(228) 896-5430/c(228) 324-2246
Retired Circuit Court Judge

Frank G. VollarP.O. Box 821355, Vicksburg 39183 (601) 638-8686/(601) 638-8681
Retired Circuit Court Judge

William L. Waller, Jr. 1 Sheffield Ct., Jackson 39211 (601) 559-7375
Retired Supreme Court Justice

Michael H. Ward4806 Harrison Cir., Gulfport 39507 (228) 867-6210/(228) 861-8731
Retired County Court Judge

Pat H. Watts, Jr.3906 Pine St., Pascagoula 39567 (228) 217-6515/(228) 762-0292
Retired Chancellor

Jeff Weill, Sr.1956 Douglas Dr., Jackson 39211 (601) 842-9664
Retired Circuit Court Judge

T. Larry Wilson1000 Swordfish St., Pascagoula 39581(228) 219-9161
Retired County Court Judge

Patricia D. Wise5940 Huntview Dr., Jackson 39206 (601) 672-7893
Retired Chancery Court Judge

MISSISSIPPI APPELLATE COURTS

CONTACT INFORMATION

Carroll Gartin Justice Building
450 High St., Jackson 39201
P.O. Box 117, Jackson 39205
www.courts.ms.gov

COURT ADMINISTRATION

Carroll Gartin Justice Building
P.O. Box 117, Jackson 39205
(601) 359-3697/f(601) 359-2443

Hubbard (Hubby) T. Saunders IV

Court Administrator and Counsel
hsaunders@courts.ms.gov
(601) 359-2182

Alexander J. Sullivan

Supreme Court Editor of Opinions
asullivan@courts.ms.gov
(601) 359-1858

Justin R. Ponds

Court of Appeals Editor of Opinions
(601) 576-4726

Camille H. Evans

Court of Appeals Asst. Court
Administrator
cevans@courts.ms.gov
(601) 576-4725

CLERK'S OFFICE

Carroll Gartin Justice Building
 450 High St., Jackson 39201
 P.O. Box 249, Jackson 39205
 (601) 359-3694/f(601) 359-2704

D. Jeremy Whitmire

Court Clerk
 sctclerk@court.ms.gov
 (601) 359-2175

Rusty Holmes

Chief Deputy Clerk

CENTRAL LEGAL

(601) 359-3072

Robert E. "Rob" Nations, Jr., Director

rnations@courts.ms.gov
 (601) 359-3072

Mississippi State Law Library

(601) 359-3672/f(601) 359-2912
 Stephen Parks
 State Librarian
 sparks@courts.ms.gov

ADMINISTRATIVE OFFICE OF COURTS

Carroll Gartin Justice Building
 450 High St., Jackson 39201
 P.O. Box 117, Jackson 39205
 (601) 576-4630/f(601) 576-4639

Greg Snowden

Administrative Office of Courts Director
 gsnowden@courts.ms.gov
 (601) 576-4636

Beverly Pettigrew Kraft

Public Information Officer
 bkraft@courts.ms.gov
 (601) 576-4637

Lisa Counts

Deputy Director
 lcounts@courts.ms.gov
 (601) 359-3470

Pam Holmes

Director of Intervention Courts
 pholmes@courts.ms.gov
 (601) 576-4631

Paige Hughes

Administrative Assistant
 phughes@courts.ms.gov
 (601) 576-4628

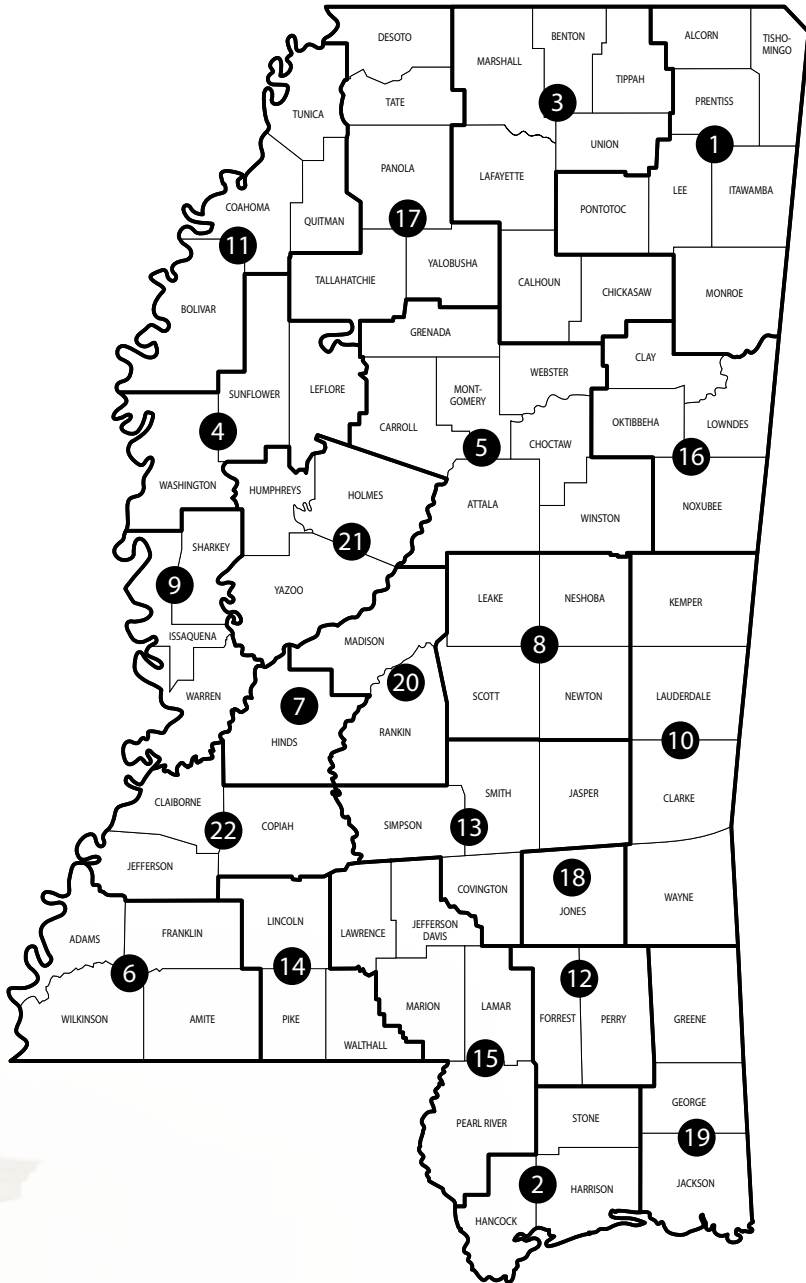
Deanna Graves

Youth Court Program Director
 deanna.graves@courts.ms.gov
 (601) 576-4627

CIRCUIT & CHANCERY COURT DISTRICTS BY COUNTY

Chancery	Circuit District	District	Chancery	Circuit District	District
Adams.....	17	6	Leflore	7	4
Alcorn	1	1	Lincoln	15	14
Amite	4	6	Lowndes	14	16
Attala	6	5	Madison	11	20
Benton	18	3	Marion	10	15
Bolivar	7	11	Marshall	18	3
Calhoun	18	3	Monroe	1	1
Carroll	6	5	Montgomery	3	5
Chickasaw	14	3	Neshoba	6	8
Choctaw	6	5	Newton.....	2	8
Claiborne	17	22	Noxubee	14	16
Clarke	12	10	Oktibbeha	14	16
Clay	14	16	Panola	3	17
Coahoma	7	11	Pearl River	10	15
Copiah	15	22	Perry	10	12
Covington	13	13	Pike	4	14
DeSoto	3	17	Pontotoc	1	1
Forrest	10	12	Prentiss	1	1
Franklin.....	4	6	Quitman	7	11
George	16	19	Rankin.....	20	20
Green	16	19	Scott	2	8
Grenada	3	5	Sharkey	9	9
Hancock	8	2	Simpson	13	13
Harrison	8	2	Smith	13	13
Hinds	5	7	Stone	8	2
Holmes	11	21	Sunflower	9	4
Humphreys	9	21	Tallahatchie	7	17
Issaquena	9	9	Tate	3	17
Itawamba.....	1	1	Tippah	18	3
Jackson	16	19	Tishomingo	1	1
Jasper	2	13	Tunica	7	11
Jefferson	17	22	Union	1	3
Jefferson Davis	13	15	Walthall	4	14
Jones	19	18	Warren.....	9	9
Kemper	6	10	Washington	9	4
Lafayette	18	3	Wayne	19	10
Lamar	10	15	Webster	14	5
Lauderdale.....	12	10	Wilkinson	17	6
Lawrence	13	15	Winston	6	5
Leake	11	8	Yalobusha	3	17
Lee	1	1	Yazoo	11	21

CIRCUIT COURT DISTRICTS



CIRCUIT COURT JUDGES

Circuit Courts hear felony criminal prosecutions and civil lawsuits. Circuit Courts hear appeals from County, Justice, and Municipal courts and from administrative boards and commissions such as the Workers’ Compensation Commission and the Mississippi Department of Employment Security.

There are 22 Circuit Court districts and 57 Circuit Court judges. The number of Circuit judges per district ranges from one to four. Circuit Court judges are selected in non-partisan elections to serve four-year terms.

Trials are heard with a 12-member jury and usually one or two alternate jurors. A judge may preside without a jury if the dispute is a question of law rather than fact.

1ST CIRCUIT DISTRICT

Alcorn, Tishomingo, Prentiss, Pontotoc, Lee, Itawamba, & Monroe Counties

Judge Paul S. Funderburk..... **P.O. Drawer 1100, Tupelo 38802**.....**(662) 432-2360/f(662) 680-6078**
 Ct. Rept., Sharen K. Sewell 165 N. Main St., Pontotoc 38863(662) 432-2360/f(662) 680-6078
 Ct. Admn., Angela Stewart P.O. Drawer 1100, Tupelo 38802(662) 432-2365/f(662) 680-6078
 D. Ct. Admin., Jill S. Reinhard P.O. Drawer 1100, Tupelo 38802(662) 432-2364/f(662) 680-6078
 Staff Atty., Justin C. Moody P.O. Drawer 1100, Tupelo 38802(662) 432-2362/f(662) 680-6078
 Law Clerk, Bryce A. Montgomery P.O. Drawer 1100, Tupelo 38802(662) 432-2361/f(662) 680-6078

Judge Michael P. Mills, Jr **P.O. Drawer 1100, Tupelo 38802**.....**(662) 432-2360/f(662) 680-6078**
 Ct. Rept., Kim Bounds 849 Country Oaks Cir., Tupelo 38801 ... (662) 432-2360/f(662) 680-6078
 Ct. Admn., Angela Stewart P.O. Drawer 1100, Tupelo 38802(662) 432-2365/f(662) 680-6078
 D. Ct. Admin., Jill S. Reinhard P.O. Drawer 1100, Tupelo 38802(662) 432-2364/f(662) 680-6078
 Staff Atty., Justin C. Moody P.O. Drawer 1100, Tupelo 38802(662) 432-2362/f(662) 680-6078
 Law Clerk, Bryce A. Montgomery P.O. Drawer 1100, Tupelo 38802(662) 432-2361/f(662) 680-6078

Judge John R. White **P.O. Drawer 1100, Tupelo 38802**.....**(662) 432-2360/f(662) 680-6078**
 Ct. Rept., Karen M. (Kay) Larson 2202 Willow Rd., Corinth 38834(662) 432-2360/f(662) 680-6078
 Ct. Admn., Angela Stewart P.O. Drawer 1100, Tupelo 38802(662) 432-2365/f(662) 680-6078
 D. Ct. Admin., Jill S. Reinhard P.O. Drawer 1100, Tupelo 38802(662) 432-2364/f(662) 680-6078
 Staff Atty., Justin C. Moody P.O. Drawer 1100, Tupelo 38802(662) 432-2362/f(662) 680-6078
 Law Clerk, Bryce A. Montgomery P.O. Drawer 1100, Tupelo 38802(662) 432-2361/f(662) 680-6078

Judge Kelly L. Mims **P.O. Drawer 1100, Tupelo 38802**.....**(662) 432-2360/f(662) 680-6078**
 Ct. Rept., Melanie Owen 300 Bass Ln., Pontotoc 38863(662) 432-2360/f(662) 680-6078
 Ct. Admn., Angela Stewart P.O. Drawer 1100, Tupelo 38802(662) 432-2365/f(662) 680-6078
 D. Ct. Admin., Jill S. Reinhard P.O. Drawer 1100, Tupelo 38802(662) 432-2364/f(662) 680-6078
 Staff Atty., Justin C. Moody P.O. Drawer 1100, Tupelo 38802(662) 432-2362/f(662) 680-6078
 Law Clerk, Bryce A. Montgomery P.O. Drawer 1100, Tupelo 38802(662) 432-2361/f(662) 680-6078

2ND CIRCUIT DISTRICT

Hancock, Harrison, & Stone Counties

Judge Lisa P. Dodson **P.O. Box 1461, Gulfport 39502****(228) 865-4220/f(228) 865-4376**
 Ct. Rep. Michelle Stewart P.O. Box 1461, Gulfport 39502(228) 865-4016/f(228) 865-4376
 Ct. Admn., Monica Hewes (Criminal) P.O. Box 1461, Gulfport 39502(228) 865-4220/f(228) 865-4376
 Ct. Admn., Shirley Valdez (Civil) P.O. Box 1461, Gulfport 39502(228) 865-4006/f(228) 865-1636
 Staff Att., Constance Jordan P.O. Box 1461, Gulfport 39502(228) 865-4110/f(228) 865-4376

Judge Randi Mueller **P.O. Box 1461, Gulfport 39502****(228) 865-4158/f(228) 865-1636**
 Ct. Rept., Michele Woods P.O. Box 1461, Gulfport 39502(228) 865-1630/f(228) 865-1636
 Ct. Admn., Mary Ladner P.O. Box 1461, Gulfport 39502(228) 865-4158/f(228) 865-1636
 Ct. Admn., Leigh Ann Atherton (Criminal) P.O. Box 1461, Gulfport 39502(228) 865-4104/f(228) 867-6536
 Ct. Admn., Shirley Valdez (Civil) P.O. Box 1461, Gulfport 39502(228) 865-4006/f(228) 865-1636

Judge Christopher L. Schmidt	P.O. Box 1461, Gulfport 39502	(228) 865-4104/f(228) 867-6536
Ct. Rept., Huey Bang	P.O. Box 1461, Gulfport 39502	(228) 865-4104/f(228) 867-6536
Ct. Admn., Leigh Ann Atherton (Criminal)	P.O. Box 1461, Gulfport 39502	(228) 865-4104/f(228) 867-6536
Ct. Admn., Shirley Valdez (Civil)	P.O. Box 1461, Gulfport 39502	(228) 865-4006/f(228) 865-1636
Staff Atty., Shannon Favre	P.O. Box 1461, Gulfport 39502	(228) 865-1038/f(228) 867-6536
Judge Lawrence Bourgeois, Jr.	P.O. Box 1461, Gulfport 39502	(228) 865-4262/f(228) 865-1636
Ct. Rept., Susie Davis.....	P.O. Box 1461, Gulfport 39502	(228) 865-4261/f(228) 865-1636
Ct. Admn., Monica Hewes (Criminal)	P.O. Box 1461, Gulfport 39502	(228) 865-4220/f(228) 865-4376
Ct. Admn., Shirley Valdez (Civil)	P.O. Box 1461, Gulfport 39502	(228) 865-4006/f(228) 865-1636
Staff Atty., Pepper Pearson	P.O. Box 1461, Gulfport 39502	(228) 863-4638/f(228) 865-1636

3RD CIRCUIT DISTRICT

Benton, Calhoun, Chickasaw, Lafayette, Marshall, Tippah, & Union Counties

Judge Grady F. Tollison III	1 Courthouse Sq., Ste. 201, Oxford 38655..	(662) 234-3013/f(662) 236-3401
Ct. Rept., Christy L. Adair	P.O. Box 504, New Albany 38652	(662) 316-4242/f(662) 534-6215
Ct. Rept., Anita G. Moss	P.O. Box 47, Houston 38851	(662) 456-5464/No Fax
Ct. Rept., Dana Rakestraw	P.O. Box 982, New Albany 38652	(662)317-1565/No Fax
Ct. Rept., Maggie B. Fair	1003 Agusta Dr., Oxford 38655	(662) 236-2808/f(662) 236-0238
Ct. Admn., Ashley Roberts	1 Courthouse Sq., Ste. 201, Oxford 38655	(662) 234-3013/f(662) 236-3401
Staff Atty. III, Mary Ann Percy	1 Courthouse Sq., Ste. 101, Oxford 38655	(662) 234-3013/f(662) 236-3401
Judge Kent E. Smith	P.O. Box 670, Holly Springs 38635	(662) 252-6311/f(662) 447-3332
Ct. Rept., Christy L. Adair	P.O. Box 504, New Albany 38652	(662) 316-4242/f(662) 534-6215
Ct. Rept., Anita G. Moss	P.O. Box 47, Houston 38851	(662)456-5464/No Fax
Ct. Rept., Dana Rakestraw	P.O. Box 982, New Albany 38652	(662)317-1565/No Fax
Ct. Rept., Maggie B. Fair	1003 Agusta Dr., Oxford 38655	(662) 236-2808/f(662) 236-3401
Ct. Admn., Janet Pruett	P.O. Box 670, Holly Springs 38655	(662) 252-6311/f(662) 447-3332
Staff Atty. III, Mary Ann Percy	1 Courthouse Sq., Ste. 101, Oxford 38655	(662) 234-3013/f(662) 236-3401

Judge J. Kelly Luther	102 N Main St. Ste. F, Ripley 38663	(662) 837-7884/f(662) 837-7513
Ct. Rept., Christy L. Adair	P.O. Box 504, New Albany 38652	(662) 316-4242/f(662) 534-6215
Ct. Rept., Anita G. Moss	P.O. Box 47, Houston 38851	(662) 456-5464/No Fax
Ct. Rept., Dana Rakestraw	P.O. Box 982, New Albany 38652	(662) 317-1565/No Fax
Ct. Rept., Maggie B. Fair	1003 Agusta Dr., Oxford 38655	(662) 236-2808/f(662) 236-3401
Ct. Admn., Kathy Sturdivant	102 N. Main St., Ste. F, Ripley 38663	(662) 837-7884/f(662) 837-7513
Staff Atty., Mary Ann Percy	1 Courthouse Sq., Ste. 201, Oxford 38655	(662) 234-3013/f(662) 236-3401

4TH CIRCUIT DISTRICT

Leflore, Sunflower, & Washington Counties

Judge Carol White-Richard	P.O. Box 686, Indianola 38751	(662) 445-1996/f(662) 887-5656
Ct. Rept., Shauna W. Stanford	P.O. Box 686, Indianola 38751	(662) 445-1996/f(662) 887-5656
Ct. Admn., Netty R. Sear.....	P.O. Box 686, Indianola 38751	(662) 445-1996/f(662) 887-5656
Law Clerk, LaTrish Wheeler.....	P.O. Box 686, Indianola 38751	(662) 445-1996/f(662) 887-5656

Judge Richard A. Smith	P.O. Box 10239, Greenwood 38930	(662) 453-1429/f(662) 455-9056
Ct. Rept., Harvey Hollioowell	P.O. Box 10239, Greenwood 38930	(662) 453-1429/f(662) 455-9056
Ct. Admn., Ann Banks.....	P.O. Box 10239, Greenwood 38930	(662) 453-1429/f(662) 455-9056
Staff Atty., Alison Pittman	P.O. Box 10239, Greenwood 38930	(662) 453-1429/f(662) 455-9056

Judge Margaret Carey-McCray	P.O. Box 1775, Greenville 38702-1775	(662) 334-2797/f(662) 334-2716
Ct. Rept., Leigh Gray.....	P.O. Box 1775, Greenville 38702-1775 ..	(662) 334-2797/f(662) 334-2716
Ct. Admn., Angela Howard	P.O. Box 1775, Greenville 38702-1775 ..	(662) 334-2797/f(662) 334-2716
Lgl Rsch. Asst., LaShonda Campbell....	P.O. Box 1775, Greenville 38702-1775 ..	(662) 334-2797/f(662) 334-2716

Judge W. Ashley Hines	P.O. Box 1315, Greenville 38702-1315	(662) 334-2652/f(662) 335-2381
Ct. Rept., Trudye Quinn	P.O. Box 1315, Greenville 38702-13151 ..	(662) 932-5354/f(662) 335-2381
Ct. Admn., Sandy Sanders	P.O. Box 1315, Greenville 38702-1315 ..	(662) 334-2652/f(662) 335-2381
Staff Atty., Kena Campbell	P.O. Box 1315, Greenville 38702-1315 ..	(662) 334-2790/f(662) 335-2381

5TH CIRCUIT DISTRICT

Attala, Carroll, Choctaw, Grenada, Montgomery, Webster, & Winston Counties

Judge George Mitchell, Jr.	P.O. Drawer J, Eupora 39744	(662) 258-3691/f(662) 258-6855
Ct. Rept., Charla Boatman	2887 E. Roane Ave., Eupora 39744.....	(662) 552-0681/No Fax
Ct. Rept., Tammy Thomas.....	1882 Russel Rd., Noxapater 39345	(662) 724-2922/f(662) 724-2922
Ct. Admn., Rosaland Jordan	P.O. Drawer J, Eupora 39744	(662) 258-3691/f(662) 258-6855
Judge Joseph H. Loper, Jr.	P.O. Box 616, Ackerman 39735	(662) 285-3818/f(662) 285-3160
Ct. Rept., Noelle Skelton	610 Hickory Hill Rd., Kosciusko 39090.....	(601) 562-0306/No Fax
Ct. Rept., Charla Boatman	2887 E. Roane Ave., Eupora 39744.....	(662) 552-0681/No Fax
Staff Atty., Rosaland Jordan	P.O. Box 616, Ackerman 39735	(662) 285-3818/f(662) 285-3160

6TH CIRCUIT DISTRICT

Adams, Amite, Franklin, & Wilkinson Counties

Judge Lillie Blackmon Sanders	115 S. Wall St., Natchez 39121	(601) 445-7933/f(601) 445-2369
Ct. Rept., Tracy Davis	115 S. Wall St., Natchez 39121	(601) 445-7933/f(601) 445-2369
Ct. Admn., Martha Griffin.....	115 S. Wall St., Natchez 39121	(601) 445-7933/f(601) 445-2369
Secretary III, Takeisha Owens.....	115 S. Wall St., Natchez 39121	(601) 445-7933/f(601) 445-2369
Law Clerk II, Peirce Beach	115 S. Wall St., Natchez 39121	(601) 445-7933/f(601) 445-2369
Judge Debra W. Blackwell	115 S. Wall St., Natchez 39121	(601) 442-8363/f(601) 445-7954
Ct. Rept., Melanie G. Murray.....	115 S. Wall St., Natchez 39121	(601) 442-8363/f(601) 445-7954
D. Ct. Admn., Sheri Simmons.....	115 S. Wall St., Natchez 39121	(601) 442-8363/f(601) 445-7954
Staff Atty. IV., Matthew Kidder	115 S. Wall St., Natchez 39121	(601) 442-8363/f(601) 445-7954

7TH CIRCUIT DISTRICT

Hinds County

Judge Adrienne Wooten	P.O. Box 327, Jackson 39205	(601) 968-6679/f(601) 973-5541
Ct. Rept., Tesa Barrett	P.O. Box 327, Jackson 39205	(601) 968-6662/f(601) 973-5541
Ct. Rept., Dawn Johnson	P.O. Box 327, Jackson 39205	(601) 968-6662/f(601) 973-5541
Ct. Admn., Terri Barnes	P.O. Box 327, Jackson 39205	(601) 968-6679/f(601) 973-5541
Law Clerk, Chaz Mangum	P.O. Box 327, Jackson 39205	(601) 965-8839/f(601) 973-5541
Judge Winston Kidd	P.O. Box 327, Jackson 39205	(601) 968-6688/f(601) 714-6305
Ct. Rept., Estella Wren	P.O. Box 327, Jackson 39205	(601) 968-6673/f(601) 973-5541
Ct. Rept., Danette Horne.....	P.O. Box 327, Jackson 39205	(601) 968-6660/f(601) 973-5541
Ct. Admn., Evelyn Hunter	P.O. Box 327, Jackson 39205	(601) 968-6688/f(601) 714-6305
Law Clerk II, Edward Kennebrew, Jr. .	P.O. Box 327, Jackson 39205	(601) 973-5577/f(601) 714-6305
Judge Eleanor Faye Peterson	P.O. Box 327, Jackson 39205	(601) 714-6222/f(601) 948-2689
Ct. Rept., Lindsey McIntosh	P.O. Box 327, Jackson 39205	(601) 968-6680/f(601) 948-2689
Ct. Rept., Lon Tesa Barrett	P.O. Box 327, Jackson 39205	(601) 968-6662/f(601) 948-2689
Ct. Admn., Faye Jackson	P.O. Box 327, Jackson 39205	(601) 714-6222/f(601) 948-2689
Law Clerk, Corey Haarris.....	P.O. Box 327, Jackson 39205	(601) 968-6656/f(601) 948-2689
Judge Tomie T. Green	P.O. Box 327, Jackson 39205	(601) 968-6658/f(601) 714-6270
Ct. Rept., Kimberly Smith	P.O. Box 327, Jackson 39205	(601) 714-6233/f(601) 948-2689
Ct. Rept., Estella Wren	P.O. Box 327, Jackson 39205	(601) 968-6673/f(601) 948-2689
Ct. Admn., Frances Ashley.....	P.O. Box 327, Jackson 39205	(601) 968-6658/f(601) 714-6270
Staff Atty., Michael P. Gorden	P.O. Box 327, Jackson 39205	(601) 968-6792/f(601) 714-6270

8TH CIRCUIT DISTRICT

Leake, Neshoba, Newton, & Scott Counties

Judge Mark Duncan	201 Range Ave., Philadelphia 39350	(601) 656-5776/f(601) 656-3329
Ct. Rept., Rita Bailey Brown	150 Love Rd., Kosciusko 39090	(601) 750-9311/f(601) 656-6730
Ct. Rept., Jennifer Seward	791 Richland E. Dr., Richland 39218	(601) 720-0462/f(601) 656-6730
Ct. Admn., Nicole Bryan	201 Range Ave., Philadelphia 39350	(601) 656-5776/f(601) 656-3329
Law Clerk, Tyler Moore	201 Range Ave., Philadelphia 39350	(601) 656-7646/f(601) 656-6730

Judge Caleb E. May P.O. Box 388, Philadelphia 39350 (601) 656-4830/No Fax
 Ct. Rept., Rita Bailey Brown 150 Love Rd., Kosciusko 39090 (601) 750-9311/No Fax
 D. Ct. Admn., BreAnna Tullos P.O. Box 388, Philadelphia 39350 (601) 635-3540/f(601) 635-2892
 Law Clerk, Amber Wheller 201 Range Ave., Philadelphia 39350 (601) 656-5776/f(601) 635-2892

9TH CIRCUIT DISTRICT

Issaquena, Sharkey, & Warren Counties

Judge M. James Chaney, Jr. P.O. Box 351, Vicksburg 39181 (601) 638-8981/f(601) 630-8033
 Ct. Rept., LaLisa Lindeman P.O. Box 351, Vicksburg 39181 (601) 638-8981/f(601) 630-8033
 Ct. Rept., Kristy V. Johnson P.O. Box 351, Vicksburg 39181 (601) 638-8981/f(601) 630-8033
 Ct. Admn., Lee Ann Stuart P.O. Box 351, Vicksburg 39181 (601) 638-8981/f(601) 630-8033
 Staff Atty., Le Brown P.O. Box 351, Vicksburg 39181 (601) 638-8981/f(601) 630-8033

Judge Toni Walker Terrett P.O. Box 351, Vicksburg 39181 (601) 634-8042/f(601) 634-8049
 Ct. Rept., Kristy V. Johnson P.O. Box 351, Vicksburg 39181 (601) 634-8042/f(601) 634-8049
 Ct. Rept., Vanessa Townsel P.O. Box 351, Vicksburg 39181 (601) 634-8042/f(601) 634-8049
 Ct. Admn., Melanie Sanders P.O. Box 351, Vicksburg 39181 (601) 634-8042/f(601) 634-8049
 Lgl. Rsch. Asst., LaFreda Lee P.O. Box 351, Vicksburg 39181 (601) 634-8042/f(601) 634-8049

10TH CIRCUIT DISTRICT

Clarke, Kemper, Lauderdale, & Wayne Counties

Judge Robert T. (Bo) Bailey P.O. Box 1262, Meridian 39302 (601) 482-9741/f(601) 486-4933
 Ct. Rept., Ruth Ann Patrick P.O. Box 1262, Meridian 39302 (601) 482-9783/f(601) 486-4933
 Ct. Rept., Starr Griffin P.O. Box 3751, Meridian 39303 (601) 482-9783/f(601) 484-3970
 Ct. Admn., Gayle M. Wink P.O. Box 1262, Meridian 39302 (601) 482-9741/f(601) 486-4933
 Staff Atty., Lauren Williams P.O. Box 1262, Meridian 39302 (601) 482-8761/f(601) 486-4933

Judge Charles W. Wright, Jr P.O. Box 1677, Meridian 39302 (601) 482-9741/f(601) 486-4933
 Ct. Rept., Patricia McMillan P.O. Box 1262, Meridian 39302 (601) 482-9783/f(601) 484-3970
 Ct. Rept., Ruth Ann Patrick 500 Constitution Ave., Meridian 39301 (601) 482-9783/f(601) 486-4933
 Ct. Admn., Gayle M. Wink P.O. Box 1262, Meridian 39302 (601) 482-9741/f(601) 486-4933
 Law Clerk, Austin Terry P.O. Box 1262, Meridian 39302 (601) 482-4922/f(601) 486-4933

11TH CIRCUIT DISTRICT

Bolivar, Coahoma, Quitman, & Tunica Counties

Judge Charles E. Webster P.O. Drawer 998, Clarksdale 38614-0998 ... (662) 624-3017/f(662) 624-2515
 Ct. Rept., Mary Dilley P.O. Drawer 998, Clarksdale 38614-0998 (662) 624-3039/f(662) 624-2515
 Ct. Rept., Jamie McCracken P.O. Drawer 998, Clarksdale 38614-0998 (662) 624-3039/f(662) 624-2515
 D. Ct. Admn., Teresa Ragland P.O. Drawer 998, Clarksdale 38614-0998 (662) 624-3039/f(662) 624-2515
 Staff Atty., Donald W. Cumbest II P.O. Drawer 998, Clarksdale 38614-0998 (662) 624-3017/f(662) 624-2515

Judge Albert B. Smith III P.O. Drawer 478, Cleveland 38732 (662) 843-3346/f(662) 846-2930
 Ct. Rept., Cynthia Pickens P.O. Drawer 478, Cleveland 38732 (662) 843-3346/f(662) 846-2930
 Ct. Admn., Rebecca Dean P.O. Drawer 478, Cleveland 38732 (662) 843-3346/f(662) 846-2930
 Law Clerk, Lance Martin P.O. Drawer 478, Cleveland 38732 (662) 843-3346/f(662) 846-2930

Judge Linda F. Coleman P.O. Drawer 548, Cleveland 38732 (662) 846-2939/f(662) 846-2937
 D. Ct. Admn., Theresa J. Thigpen P.O. Drawer 548, Cleveland 38732 (662) 846-2939/f(662) 846-2937
 Ct. Rept., Mary Louise Wright P.O. Drawer 548, Cleveland 38732 (662) 846-2939/f(662) 846-2937
 Law Clerk., Hunter D. Webb P.O. Drawer 548, Cleveland 38732 (662) 846-2939/f(662) 846-2937

12TH CIRCUIT DISTRICT

Forrest & Perry Counties

Judge Robert B. Helfrich P.O. Box 309, Hattiesburg 39403 (601) 544-5495/f(601) 545-6179
 Ct. Rept., Beverly Temple P.O. Box 309, Hattiesburg 39403 (601) 544-5495/f(601) 545-6179
 Ct. Admn., Brittany Stuart P.O. Box 309, Hattiesburg 39403 (601) 544-5495/f(601) 545-6179
 Law Clerk, Sandra Mohler P.O. Box 309, Hattiesburg 39403 (601) 544-5495/f(601) 545-6179
 Rsch. Asst., Clarissa Kelly P.O. Box 309, Hattiesburg 39403 (601) 544-5495/f(601) 545-6179

JUDICIAL

Judge Jon Mark Weathers..... P.O. Box 830, Hattiesburg 39403(601) 544-8230/f(601) 544-8255
Ct. Rept., Elena James P.O. Box 830, Hattiesburg 39403 (601) 544-8230/f(601) 544-8255
Ct. Admn., Melba Chauvin P.O. Box 830, Hattiesburg 39403 (601) 544-8230/f(601) 544-8255
Staff Atty., Beth Windham P.O. Box 830, Hattiesburg 39403 (601) 544-8230/f(601) 544-8255

13TH CIRCUIT DISTRICT

Covington, Jasper, Simpson, & Smith Counties

Judge Matthew G. Sullivan P.O. Box 545, Raleigh 39153..... (601) 782-4413/f(601) 782-4007
Ct. Rept., Rosie Sanchez P.O. Box 295, Mt. Olive 39119(601) 466-3446/f(601) 782-4007
Ct. Admn., Judy Herrington P.O. Box 545, Raleigh 39153(601) 782-4413/f(601) 782-4007
Staff Atty., Ray Therrell P.O. Box 861, Raleigh 39153(601) 953-7766/f(601) 782-4007

Judge Stanley Sorey P.O. Box 861, Raleigh 39153(601) 782-9999/f(601) 782-4007
Ct. Rept., Kimberly Ulmer..... P.O. Box 126, Raleigh 39153 (601) 479-0930/f(601) 782-4007
Ct. Admn., Darlene Therrell P.O. Box 861, Raleigh 39153 (601) 813-8270/f(601) 782-4007
Staff Atty., Ray Therrell P.O. Box 861, Raleigh 39153 (601) 953-7766/f(601) 782-4007

14TH CIRCUIT DISTRICT

Lincoln, Pike, & Walthall Counties

Judge Michael M. Taylor..... P.O. Drawer 1350, Brookhaven 39602..... (601) 835-1576/f(601) 835-5644
Ct. Rept., Deborah Lang..... P.O. Drawer 1350, Brookhaven 39602(601) 835-4368/f(601) 835-5644
Ct. Rept., Paulyn Raley 204 Farmers Row, Madison 39110(601) 684-3400/f(601) 684-2700
Ct. Admn., Laurie Chassion..... P.O. Drawer 1350, Brookhaven 39602(601) 835-1576/f(601) 835-5644
Staff Atty., Mallory Newlon P.O. Drawer 1387, McComb 39649(601) 684-3400/f(601) 684-2700

Judge David H. Strong, Jr. P.O. Box 1387, McComb 39649(601) 684-3400/f(601) 684-2700
Ct. Rept., Lucretia Smith 284 Woodland Brook Dr., Madison 39110 (601) 684-3400/f(601) 835-5644
Ct. Rept., Paulynn Raley 204 Farmers Row, Madison 39110 (601) 684-3400/f(601) 684-2700
Ct. Admn., Vicki Brill P.O. Drawer 1387, McComb 39649 (601) 684-3400/f(601) 684-2700
Staff Atty., Mallory Newlon P.O. Drawer 1387, McComb 39649 (601) 684-3400/f(601) 684-2700

15TH CIRCUIT DISTRICT

Jefferson Davis, Lamar, Lawrence, Marion, & Pearl River Counties

Judge Anthony A. Mozingo..... P.O. Drawer 269, Purvis 39475(601) 794-1051/f(601) 794-3547
Ct. Rept., Nancy L. Farris 2205 Fuller St., Hattiesburg 39402(601) 408-6089/f(601) 794-3547
Ct. Admn., Crystal Browning P.O. Box 269, Purvis 39475 (601) 794-3418/f(601) 794-3547
Staff Atty., Tim Evans P.O. Box 269, Purvis 39475 (601) 794-3483/f(601) 794-3547

Judge Prentiss Harrell..... P.O. Box 488, Purvis 39475(601) 794-6035/f(601) 794-2801
Ct. Rept., Kimme Roberts..... 28 Mickell Dr., Columbia 39429(601) 441-0925/f(601) 794-2801
Ct. Admn., Alex Parker Shoemaker P.O. Box 488, Purvis 39475 (601) 794-3482/f(601) 794-2801
Staff Atty., Matthew O'Quain P.O. Box 488, Purvis 39475 (601) 794-3484/f(601) 794-2801

Judge Claiborne McDonald P.O. Box 590, Poplarville 39470..... (601) 403-2360/f(601) 403-2363
Ct. Rept., Rhonda Wetzel P.O. Box 552, Carriere 39426 (601) 463-1863/f(601) 403-2363
Ct. Admin, Jody Stuart P.O. Box 590, Poplarville 39470..... (601) 403-2360/f(601) 403-2363
Staff Atty., Scarlett Jones P.O. Box 590, Poplarville 39470..... (601) 403-2360/f(601) 403-2363

16TH CIRCUIT DISTRICT

Clay, Oktibbeha, Lowndes, & Noxubee Counties

Judge Lee J. Howard..... P.O. Box 1679, Starkville 39760.....(662) 323-6765/f(662) 323-1121
Ct. Rept., Cynthia Zelinka..... 1485 Loblolly, Starkville 39759 (662) 312-8705/No Fax
Ct. Admn., Carrie Kimbrough..... P.O. Box 1679, Starkville 39760..... (662) 323-6765/f(662) 323-1121
Law Clerk, Marissa Turner P.O. Box 1387, Columbus 39703.....(662) 329-5919/f(662) 323-1121

Judge James T. Kitchens, Jr...... P.O. Box 1387, Columbus 39703.....(662) 329-5919/f(662) 245-4632
 Ct. Rept., Nikki Clark..... 60371 Smithville Rd., Smithville 38870.....(662) 871-9055/No Fax
 Ct. Admn., Lynn Conner P.O. Box 1387, Columbus 39703..... (662) 329-5919/f(662) 245-4632
 Law Clerk, Marissa Turner P.O. Box 1387, Columbus 39703.....(662) 329-5919/f(662) 323-1121

Judge Lee S. Coleman P.O. Drawer 1033, West Point 39773..... (662) 494-4893/f(662) 494-0195
 Ct. Rept., Kathryn Boyer..... 112 Nabors Cir., Houston 38851 (662) 322-2434/No Fax
 Ct. Admn., April Edwards P.O. Drawer 1033, West Point 39773 (662) 494-4893/f(662) 494-0195
 Law Clerk, Marissa Turner P.O. Box 1387, Columbus 39703.....(662) 329-5919/f(662) 323-1121

17TH CIRCUIT DISTRICT

DeSoto, Panola, Tallahatchie, Tate, & Yalobusha Counties

Judge Celeste Embrey Wilson..... P.O. Box 280, Hernando 38632 (662) 469-8359/f(662) 469-8370
 Ct. Rept., Ginger Harrell 2535 Hwy. 51 S., Hernando 38632..... (901) 489-4496/f(662) 469-8370
 Ct. Rept., Michelle Haberstroh..... 2535 Hwy. 51 S., Hernando 38632 (901) 338-6396/f(662) 469-8370
 Ct. Admn., Rachel Allen..... 2535 Hwy. 51 S., Hernando 38632 (662) 469-8359/f(662) 469-8370
 Staff Atty., John Cody Hallmark 202 French's Alley, Senatobia 38668 (662) 487-2072/f(662) 487-3830
 Staff Atty., Jamie Heard-Smith 202 French's Alley, Senatobia 38668 (662) 487-2072/f(662) 487-3830

Judge Smith Murphey..... P.O. Box 1191, Water Valley 38965(662) 385-4261/f(662) 560-6201
 Ct. Rept., Kathy Sanford 215 S. Pocahontas St., Sardis 38666(662) 385-4261/No Fax
 Ct. Admin., Sheila McKinney..... P.O. Box 1191, Water Valley 38965((662) 385-4261/No Fax
 Staff Atty., John Cody Hallmark 202 French's Alley, Senatobia 38668 (662) 487-2072/f(662) 487-3830
 Staff Atty., Jamie Heard-Smith 202 French's Alley, Senatobia 38668(662) 487-2072/f(662) 487-3830

Judge James McClure III P.O. Box 246, Sardis 38666(662) 487-2072/f(662) 487-3830
 Ct. Rept., Julie Mims 215 S. Pocahontas St., Sardis 38666 (662) 487-2072/f(662) 487-3830
 Ct. Admn., Elizabeth Lentz 215 S. Pocahontas St., Sardis 38666(662) 487-2072/f(662) 487-3830
 Staff Atty., John Cody Hallmark 202 French's Alley, Senatobia 38668(662) 487-2072/f(662) 487-3830
 Staff Atty., Jamie Heard-Smith 202 French's Alley, Senatobia 38668 (662) 487-2072/f(662) 487-3830

Judge Gerald Chatham..... P.O. Box 527, Hernando 38632.....(662) 469-8314/f(662) 469-8313
 Ct. Admn., Suzanne Lowrie..... P.O. Box 527, Hernando 38632..... (662) 469-8314/f(662) 469-8313
 Ct. Rept., Stacy S. Climer 109 Womack Cv., Batesville 38606 (662) 934-2609/f(662) 469-8313
 Ct. Rept., Ginger Harrell..... 2535 Hwy. 51 S., Hernando 38632..... (901) 489-4496/f(662) 469-8313
 Staff Atty., John Cody Hallmark 202 French's Alley, Senatobia 38668(662) 487-2072/f(662) 487-3830
 Staff Atty., Jamie Heard-Smith 202 French's Alley, Senatobia 38668 (662) 487-2072/f(662) 487-3830

18TH CIRCUIT DISTRICT

Jones County

Judge Dal Williamson P.O. Box 65, Laurel 39441.....(601) 428-4572/f(601) 428-3189
 Ct. Rept., Christa Little P.O. Box 65, Laurel 39441 (601) 426-2054/f(601) 428-3189
 Ct. Admn., Deborah Wade P.O. Box 65, Laurel 39441 (601) 422-4228/f(601) 428-3189
 Law Clerk, Brett Pickle P.O. Box 65, Laurel 39441 (601) 428-3196/f(601) 428-3189
 Paralegal, VACANT P.O. Box 65, Laurel 39441 (601) 428-4572/f(601) 428-3189

19TH CIRCUIT DISTRICT

George, Greene, & Jackson Counties

Judge Robert P. Krebs..... P.O. Box 998, Pascagoula 39568 (228) 769-3438/f(228) 769-3262
 Ct. Rept., Edie Phillips..... P.O. Box 998, Pascagoula 39568 (228) 769-3041/f(228) 769-3262
 Ct. Admn., Gena Montgomery P.O. Box 998, Pascagoula 39568 (228) 769-3438/f(228) 769-3262
 Staff Atty., Jessica Bates P.O. Box 998, Pascagoula 39568..... (228) 769-3408/f(228) 769-3262
 Staff Atty., Anna Hall..... P.O. Box 998, Pascagoula 39568..... (228) 769-3209/f(228) 769-3262

Judge Dale Harkey..... P.O. Box 998, Pascagoula 39568 (228) 769-3434/f(228) 769-3262
 Ct. Rept., Kathy Parker P.O. Box 998, Pascagoula 39568 (228) 769-3042/f(228) 769-3262
 Ct. Admn., Patricia Smith P.O. Box 998, Pascagoula 39568 (228) 769-3434/f(228) 769-3262
 Staff Atty., Jessica Bates P.O. Box 998, Pascagoula 39568..... (228) 769-3408/f(228) 769-3262
 Staff Atty., Anna Hall..... P.O. Box 998, Pascagoula 39568..... (228) 769-3209/f(228) 769-3262

JUDICIAL

Judge Kathy King Jackson..... P.O. Box 998, Pascagoula 39568(228) 769-3244/f(228) 769-3262
 Ct. Rept., Gina Thompson P.O. Box 998, Pascagoula 39568..... (228) 769-3043/f(228) 769-3262
 Ct. Admn., Pamela Gephart P.O. Box 998, Pascagoula 39568.....(228) 769-3244/f(228) 769-3262
 Staff Atty., Jessica Bates P.O. Box 998, Pascagoula 39568.....(228) 769-3408/f(228) 769-3262
 Staff Atty., Anna Hall..... P.O. Box 998, Pascagoula 39568.....(228) 769-3209/f(228) 769-3262

20TH CIRCUIT DISTRICT
 Rankin & Madison Counties

Judge Dewey Arthur P.O. Box 1626, Canton 39046..... (601) 855-5555/f(601) 855-5704
 Ct. Rept., Molly Eaton P.O. Box 1626, Canton 39046..... (601) 855-5555/f(601) 855-5704
 D. Ct. Admn., Branden Moore P.O. Box 1626, Canton 39046..... (601) 855-5555/f(601) 855-5704
 D. Ct. Admn., Tammy Hall P.O. Box 1689, Brandon 39043..... (601) 824-2452/f(601) 824-2441
 Law Clerk, Sarah Moulder Butler P.O. Box 1626, Canton 39046..... (601) 855-5586/f(601) 855-5704

Judge VACANT..... P.O. Box 1689, Brandon 39043(601) 824-2427/f(601) 824-2441
 Ct. Rept., Harvey Rayborn P.O. Box 1689, Brandon 39043.....(601) 824-2427/f(601) 824-2441
 D. Ct. Admn., Branden Moore (Madison) .. P.O. Box 1626, Canton 39046.....(601) 855-5555/f(601) 824-2441
 D. Ct. Admn., Tammy Hall (Rankin)..... P.O. Box 1689, Brandon 39043.....(601) 824-2427/f(601) 824-2441
 Law Clerk, Sarah Moulder Butler P.O. Box 1626, Canton 39046..... (601) 855-5586/f(601) 855-2441

Judge Steve S. Ratcliff P.O. Box 1626, Canton 39046(601) 855-5570/f(601) 855-5704
 Ct. Rept., Debbie Nester P.O. Box 1626, Canton 39046.....(601) 855-5570/f(601) 855-5704
 D. Ct. Admn., Natalie Kirby P.O. Box 1626, Canton 39046.....(601) 855-5570/f(601) 855-5704
 Law Clerk, Sarah Moulder Butler P.O. Box 1626, Canton 39046.....(601) 855-5586/f(601) 855-5704

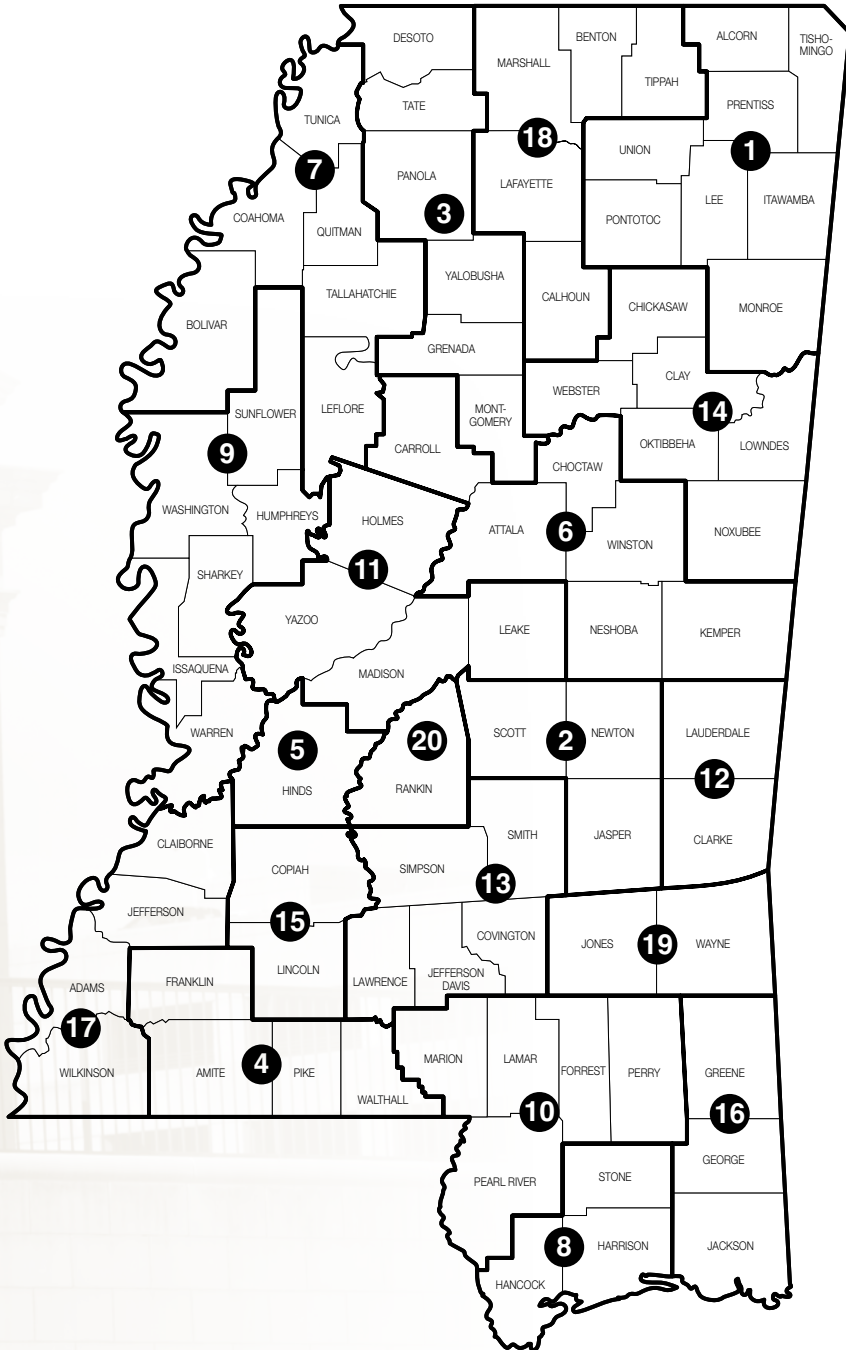
21ST CIRCUIT DISTRICT
 Holmes, Humphreys, & Yazoo Counties

Judge Jannie M. Lewis-Blackmon...P.O. Box 149, Lexington 39095(662) 834-1452/f(662) 834-1481
 Ct. Rept., Victoria Reeves..... P.O. Box 149, Lexington 39095.....(662) 834-1452/f(662) 834-1481
 Ct. Rept., Patrick Wallace..... P.O. Box 149, Lexington 39095.....(662) 834-1452/f(662) 834-1481
 Ct. Admn., Modora A. Gordon P.O. Box 149, Lexington 39095.....(662) 834-1452/f(662) 834-1481

22ND CIRCUIT DISTRICT
 Copiah, Claiborne, & Jefferson Counties

Judge Tomika H. Irving..... P.O. Box 278, Fayette 39069(601) 786-9600/f(601) 786-8900
 Ct. Rept., Theresa Lumley P.O. Box 278, Fayette 39069..... (601) 786-9600/f(601) 786-8900
 Ct. Admn., Kinshasa West..... P.O. Box 278, Fayette 39069..... (601) 786-9600/f(601) 786-8900
 Law Clerk, Tiffany Penedleton P.O. Box 278, Fayette 39069..... (601) 786-9600/f(601) 786-8900

CHANCERY COURT DISTRICTS



CHANCERY COURT JUDGES

Chancery Courts have jurisdiction over disputes in matters involving equity; domestic matters including adoptions, custody disputes, and divorces; guardianships; sanity hearings; wills; and challenges to constitutionality of state laws. Land records are filed in Chancery Court.

Chancery Courts have jurisdiction over juvenile matters in counties which have no County Court. The chancellor may appoint a lawyer in private practice to sit as a youth court referee to hear juvenile matters such as delinquency, abuse and neglect.

Trials are typically heard by a chancellor without a jury, although state law allows parties to request a jury in Chancery Court.

There are 20 Chancery Court districts and 52 Chancery Court judges. The number of chancery judges per district ranges from one to four. Chancery Court judges are selected in non-partisan elections to serve four-year terms.

1ST CHANCERY DISTRICT

Alcorn, Tishomingo, Prentiss, Pontotoc, Lee, Itawamba, Monroe, & Union Counties

Judge Jacqueline Mask P.O. Box 7395, Tupelo 38802(662) 432-2130/f(662) 680-6057
 Ct. Rept., Ramona Roberts 242 Crossridge Cir., Mooresville 38857..... (662) 322-0503/No Fax
 Ct. Rept., Amy Williams 5195 Water Ridge Dr., Tupelo 38801..... (662) 790-3030/No Fax
 Ct. Admn., Beth Burnett McNutt P.O. Box 7395, Tupelo 38802..... (662) 432-2130/f(662) 680-6057
 D. Ct. Admn., Kimela Bratton P.O. Box 7395, Tupelo 38802..... (662) 432-2130/f(662) 680-6057
 Staff Atty., Jerry Tidwell P.O. Box 26, New Albany 38652..... (662) 534-1900/f(662) 534-1907
 Staff Atty., Cassi Hill..... P.O. Box 7395, Tupelo 38802..... (662) 432-2133/f(662) 680-6057

Judge Michael Malski..... P.O. Box 543, Amory 38821..... (662) 305-3204/f(662) 256-1191
 Ct. Rept., Melody Powell P.O. Box 367, Mantachie 38855..... (662) 397-4716/No Fax
 Ct. Rept., Ramona Roberts P.O. Box 7094, Tupelo 38802..... (662) 322-0503/No Fax
 Ct. Admn., Beth Burnett McNutt P.O. Box 7395, Tupelo 38802..... (662) 432-2130/f(662) 680-6057
 D. Ct. Admn., Kimela Bratton P.O. Box 7395, Tupelo 38802..... (662) 432-2130/f(662) 680-6057
 D. Ct. Admn., Sandra Pritchard P.O. Box 543, Amory 38821 (662) 305-3204/f(662) 256-1191
 Staff Atty., Jerry Tidwell P.O. Box 26, New Albany 38652 (662) 534-1900/f(662) 534-1907
 Staff Atty., Cassi Hill..... P.O. Box 7395, Tupelo 38802..... (662) 432-2133/f(662) 680-6057

Judge Stephen T. Bailey P.O. Box 7395, Tupelo 38802.....(662) 432-2130/f(662) 680-6057
 Ct. Rept., Kim Van 1000 Wheatley Cir., New Albany 38652..... (662) 316-9587/No Fax
 Ct. Rept., Ramona Roberts P.O. Box 7094, Tupelo 38802..... (662) 322-0503/No Fax
 Ct. Admn., Beth Burnett McNutt P.O. Box 7395, Tupelo 38802..... (662) 432-2130/f(662) 680-6057
 D. Ct. Admn., Kimela Bratton P.O. Box 7395, Tupelo 38802..... (662) 432-2130/f(662) 680-6057
 Staff Atty., Jerry Tidwell P.O. Box 26, New Albany 38652..... (662) 534-1900/f(662) 534-1907
 Staff Atty., Cassi Hill..... P.O. Box 7395, Tupelo 38802..... (662) 432-2133/f(662) 680-6057

Judge Bradley D. Tennison P.O. Box 118, Booneville 38829(662) 728-2366/f(662) 728-9303
 Ct. Rept., Pam Bell Dallas 111 W. Oxford St., Pontotoc 38863..... (662) 419-3666/No Fax
 Ct. Rept., Ramona Roberts P.O. Box 7094, Tupelo 38802.....(662) 322-0503/No Fax
 Ct. Admn., Beth Burnett McNutt P.O. Box 7395, Tupelo 38802..... (662) 432-2130/f(662) 680-6057
 D. Ct. Admn., Kimela Bratton P.O. Box 7395, Tupelo 38802..... (662) 432-2130/f(662) 680-6057
 D. Ct. Admn., Ann Ryan P.O. Box 118, Booneville 38829..... (662) 728-2366/f(662) 728-9303
 Staff Atty., Jerry Tidwell P.O. Box 26, New Albany 38652..... (662) 534-1900/f(662) 534-1907
 Staff Atty., Cassi Hill..... P.O. Box 7395, Tupelo 38802..... (662) 432-2133/f(662) 680-6057

3ND CHANCERY DISTRICT

Scott, Newton, & Jasper Counties

Robert M. Logan, Jr..... P.O. Box 58, Newton 39345 (601) 627-0154/f(601) 900-4605
 Ct. Rept., Melissa L. Magee P.O. Box 433, Mt. Olive 39119..... (601) 201-4201/f(601) 469-3116
 Ct. Admn., Carolyn Cooper..... P.O. Box 434, Forest 39074 (601) 469-2447/f(601) 469-3116

3RD CHANCERY DISTRICT

DeSoto, Tate, Panola, Yalobusha, Grenada, & Montgomery Counties

- Judge Mitchell M. Lundy, Jr.** P.O. Drawer 471, Grenada 38902..... (662) 226-1343/No Fax
 Ct. Rept., Kimberly McDowell P.O. Box 471, Grenada 38902 (662) 226-1343/No Fax
 Ct. Admn., Melanie Wells P.O. Drawer 471, Grenada 38902 (662) 226-1343/No Fax
- Judge Percy L. Lynchard, Jr** P.O. Box 340, Hernando 38632(662) 469-8374/No Fax
 Ct. Rept., Kim Pointer P.O. Box 340, Hernando 38632 (662) 469-8374/No Fax
 Ct. Admn., Linda Stinson P.O. Box 340, Hernando 38632 (662) 469-8374/No Fax
 Staff Atty., Ty Scott P.O. Box 340, Hernando 38632 (662) 469-8374/No Fax
- Judge Vicki B. Daniels** P.O. Box 1104, Batesville 38606(662) 563-8715/No Fax
 Ct. Rept., Amanda F. Kisor 1141 State Rd. 355, Etta 38627 (662) 563-8715/No Fax
 Ct. Admn., Chrystal M. Winters P.O. Box 1104, Batesville 38606 (662) 563-8715/No Fax
 Staff Atty., Bailey Peters P.O. Box 1104, Batesville 38606 (662) 563-8715/No Fax

4TH CHANCERY DISTRICT

Franklin, Amite, Pike, & Walthall Counties

- Judge Debra K. Halford** P.O. Box 575, Meadville 39653(601) 384-3833/f(601) 384-4349
 Ct. Rept., Peggy Stricklin P.O. Box 1151, Natchez 39121 (601) 446-8072/f(601) 384-4349
 Ct. Admn., Stacye Campbell P.O. Box 575, Meadville 39653 (601) 384-3833/f(601) 384-4349
 Staff Atty., Amy Ryan P.O. Box 575, Liberty 39645 (601) 657-3833/f(601) 657-4349
- Judge, Wayne Smith** P.O. Box 524, Liberty 39645(601) 657-8588/f(601) 657-8688
 Ct. Rept., Maury Parker 446 Lemon B Rd., Slaughter, LA 70777 (225) 937-9834/f(601) 657-8688
 D. Ct. Admn., Mary Whittington P.O. Box 524, Liberty 39645 (601) 657-8588/f(601) 657-8688
 Staff Atty., Amy Ryan P.O. Box 524, Liberty 39645 (601) 657-8588/f(601) 657-8688

5TH CHANCERY DISTRICT

Hinds County

- Judge Denise Owens** P.O. Box 686, Jackson 39205(601) 968-6545/f(601) 949-2602
 Ct. Rept., Vanessa Addison P.O. Box 686, Jackson 39205 (601) 968-6554/f(601) 949-2602
 Law Clerk, Christopher Derrick P.O. Box 686, Jackson 39205 (601) 973-5573/f(601) 949-2602
 Ct. Admn., Tonya Anderson P.O. Box 686, Jackson 39205 (601) 714-6309/f(601) 973-5587
- Judge Crystal Wise Martin** P.O. Box 686, Jackson 39205(601) 968-6549/f(601) 973-5587
 Ct. Rept., Debra Williams P.O. Box 686, Jackson 39205 (601) 968-6550/f(601) 949-2602
 Law Clerk, Christopher Derrick P.O. Box 686, Jackson 39205 (601) 973-5573/f(601) 949-2602
 Ct. Admn., D'Andrea L. Gilmore P.O. Box 686, Jackson 39205 (601) 968-6521/f(601) 973-5587
- Judge Tiffany Grove** P.O. Box 686, Jackson 39205(601) 968-6547/f(601) 973-5587
 Ct. Rept., Susan Gleason P.O. Box 686, Jackson 39205 (601) 968-6548/f(601) 973-5587
 Ct. Admn., D'Andrea L. Gilmore P.O. Box 686, Jackson 39205 (601) 968-6521/f(601) 973-5587
 Staff Atty., Rachel Bailey P.O. Box 686, Jackson 39205 (601) 973-5571/f(601) 973-5587
- Judge Dewayne Thomas** P.O. Box 686, Jackson 39205(601) 968-6551/f(601) 973-5587
 Ct. Rept., Jeanine Johnson P.O. Box 686, Jackson 39205 (601) 968-6552/f(601) 973-5587
 Staff Atty., Rachel Bailey P.O. Box 686, Jackson 39205 (601) 973-5571/f(601) 973-5587
 Ct. Admn., Tonya Anderson P.O. Box 686, Jackson 39205 (601) 714-6309/f(601) 973-5587

6TH CHANCERY DISTRICT

Attala, Carroll, Choctaw, Kemper, Neshoba, & Winston Counties

- Judge D. Joseph Kilgore** P.O. Box 1006, Philadelphia 39350(601) 656-1881/f(601) 656-1884
 Ct. Rept., Lindsey Williams P.O. Box 1006, Philadelphia 39350 (601) 656-1881/f(601) 656-1884
 Staff Atty., B. J. Morrow P.O. Box 1006, Philadelphia 39350 (601) 656-1881/f(601) 656-1884
 Ct. Admn., Heather C. Irby P.O. Box 1006, Philadelphia 39350 (601) 656-1881/f(601) 656-1884
- Judge Kiley Kirk** P.O. Box 387, Louisville 39339(662) 773-6686//f(662) 773-8650
 Ct. Rept., Regan Carpenter P.O. Box 387, Louisville 39339 (662) 416-6492/f(601) 773-8650
 D. Ct. Admn., Erin Land P.O. Box 387, Louisville 39339(662) 773-6686/f(662) 773-8650

7TH CHANCERY DISTRICT

Bolivar, Coahoma, LeFlore, Quitman, Tallahatchie, & Tunica Counties

- Judge Willie J. Perkins, Sr.** P.O. Box 553, Greenwood 38935 (662) 453-1432/f(662) 455-7959
 Law Clerk, Damion Richardson P.O. Box 553, Greenwood 38935 (662) 453-1432/f(662) 455-7959
 Ct. Admn., Tanessa House P.O. Box 553, Greenwood 38935 (662) 453-1432/f(662) 455-7959
 Ct. Rept., Valera Knight P.O. Box 82, Taylor 38673 (662) 816-9863/f(662) 455-7959
- Judge Catherine Farris-Carter** P.O. Box 1787, Cleveland 38732 (662) 843-2111/f(662) 843-3382
 Ct. Rept., Paula Gipson P.O. Box 1787, Cleveland 38732 (662) 843-2111/f(662) 843-3382
 Ct. Admn., Bennie Ruth Parks P.O. Box 1787, Cleveland 38732 (662) 843-2111/f(662) 843-3382
 Law Clerk, Jervarius Prescott P.O. Box 1787, Cleveland 38732 (662) 843-2111/f(662) 843-3382
- Judge W. M. Sanders** P.O. Box 473, Greenwood 38935 (662) 451-7289/f(662) 451-7122
 Ct. Rept., Amy Taylor P.O. Box 473, Greenwood 38935 (662) 455-1706/f(662) 459-4133
 Ct. Admn./Law Clk, Amanda Hargrove .. P.O. Box 473, Greenwood 38935 (662) 451-7289/f(662) 451-7122

8TH CHANCERY DISTRICT

Hancock, Harrison, & Stone Counties

- Judge Margaret Alfonso** P.O. Box 1446, Gulfport 39502 (228) 865-4096/f(228) 863-6339
 Ct. Rept., Jill Eades P.O. Box 834, Gulfport 39502 (228) 865-4012/f(228) 863-6339
 Ct. Admn., Joy B. Danzey P.O. Box 659, Gulfport 39502 (228) 865-4096/f(228) 863-6339
 Staff Atty., Margaret McArthur P.O. Box 659, Gulfport 39502 (228) 863-4640/f(228) 863-6339
- Judge Jim Persons** P.O. Box 457, Gulfport 39502 (228) 865-4096/f(228) 863-6339
 Ct. Rept., Judi Schultz P.O. Box 659, Gulfport 39502 (228) 865-4011/f(228) 863-6339
 Ct. Admn., Joy B. Danzey P.O. Box 659, Gulfport 39502 (228) 865-4096/f(228) 863-6339
 Law Clerk III, Chelsea Crittenden P.O. Box 659, Gulfport 39502 (228) 863-4790/f(228) 863-6339
- Judge Jennifer Schloegel** P.O. Box 986, Gulfport 39502 (228) 865-4096/f(228) 863-6339
 Ct. Rept., Anne Edwards 540 Commagre Blvd., Bay St. Louis 39520 (228) 865-4008/f(228) 865-1646
 Ct. Admn., Brooke Pollard P.O. Box 659, Gulfport 39502 (228) 865-4008/f(228) 865-1646
 Law Clerk III, Jamie Cook P.O. Box 659, Gulfport 39502 (228) 865-4013/f(228) 865-1646
- Judge Carter Bise** P.O. Box 1542, Gulfport 39502 (228) 865-4008/f(228) 865-1646
 Ct. Rept., Tracey G. Bertrand P.O. Box 1542, Gulfport 39502 (228) 865-1639/f(228) 865-1646
 Ct. Admn., Brooke Pollard P.O. Box 659, Gulfport 39502 (228) 865-4008/f(228) 865-1646
 Law Clerk III, Lindsey Harris P.O. Box 659, Gulfport 39502 (228) 863-4639/f(228) 865-1646

9TH CHANCERY DISTRICT

Humphreys, Issaquena, Sharkey, Sunflower, Warren, & Washington Counties

- Judge Bennie L. Richard** P.O. Box 1762, Greenville 38702 (662) 334-2685/f(662) 334-2782
 Ct. Rept., Lynette W. Grimmett P.O. Box 1762, Greenville 38702 (662) 334-2685/f(662) 334-2782
 Ct. Admn., Carnice L. Woods P.O. Box 1762, Greenville 38702 (662) 334-2685/f(662) 334-2782
 Law Clerk, Lorna D. Frazier P.O. Box 1762, Greenville 38702 (662) 334-2685/f(662) 334-2782
- Judge Vicki R. Barnes** P.O. Box 351, Vicksburg 39181 (601) 636-8327/f(601) 630-8021
 Ct. Rept., Darlene Davidson P.O. Box 351, Vicksburg 39181 (601) 636-8327/f(601) 630-8021
 Ct. Rept., Leigh Ann Dewease P.O. Box 351, Vicksburg 39181 (601) 636-8327/f(601) 630-8021
 Ct. Admn., Cynthia Hunter P.O. Box 351, Vicksburg 39181 (601) 636-8327/f(601) 630-8021
 Law Clerk, Giselle Raspberry P.O. Box 351, Vicksburg 39181 (601) 636-8327/f(601) 630-8021
- Judge Debra M. Giles** P.O. Box 850, Indianola 38751 (662) 887-7070/f(662) 887-7071
 Ct. Admn., Kimberly Williams P.O. Box 850, Indianola 38751 (662) 887-7070/f(662) 887-7071
 Law Clerk, Laura K. Cooper P.O. Box 850, Indianola 38751 (662) 887-7070/f(662) 887-7071

10TH CHANCERY DISTRICT

Forrest, Lamar, Marion, Pearl River, & Perry Counties

- District Ct. Admin. Lisa Stringer 250 Broad St., Ste. 12, Columbia 39429 (601) 736-2220
- Judge Rhea H. Sheldon** P.O. Box 1977, Hattiesburg 39403 (601) 545-6079/f(601) 545-6038
 Ct. Rept., Kimmie Roberts P.O. Box 1977, Hattiesburg 39403 (601) 545-6079/f(601) 545-6038

Ct. Admn., Joy Haley..... P.O. Box 1977, Hattiesburg 39403 (601) 545-6079/f(601) 545-6038
 Staff Atty., Stephanie Walker P.O. Box 1977, Hattiesburg 39403 (601) 545-6079/f(601) 545-6038

Judge Sheila Havard Smallwood P.O. Box 1977, Hattiesburg 39403(601) 545-6079/f(601) 545-6038

Ct. Rept., Stacy Head P.O. Box 1977, Hattiesburg 39403 (601) 545-6079/f(601) 763-4166
 Ct. Admn., Gloria Moorer P.O. Box 1977, Hattiesburg 39403 (601) 545-6079/f(601) 763-4166
 Staff Atty., Sasha Payne P.O. Box 1977, Hattiesburg 39403 (601) 545-6079/f(601) 763-4166

Judge Chad Smith..... P.O. Box 1977, Hattiesburg 39403(601) 545-6079/f(601) 545-6038

Ct. Rept., Lisa Ladner P.O. Box 1977, Hattiesburg 39403 (601) 545-6079/f(601) 763-4166
 Ct. Admn., Gloria Moorer P.O. Box 1977, Hattiesburg 39403 (601) 545-6079/f(601) 763-4166
 Staff Atty., Kristin McGee P.O. Box 1977, Hattiesburg 39403 (601) 545-6079/f(601) 763-4166

Judge Deborah J. Gambrell..... P.O. Box 1977, Hattiesburg 39403 (601) 545-6079/f(601) 545-6038

Ct. Rept., Twila Jordan-Hoover P.O. Box 1977, Hattiesburg 39403 (601) 545-6079/f(601) 545-6038
 Ct. Admn., Joy Haley..... P.O. Box 1977, Hattiesburg 39403 (601) 545-6079/f(601) 545-6038
 Staff Atty., Jennifer Rogers P.O. Box 1977, Hattiesburg 39403 (601) 545-6079/f(601) 545-6038
 Law Clerk, Kira Newson..... P.O. Box 1977, Hattiesburg 39403 (601) 545-6079/f(601) 545-6038

11TH CHANCERY DISTRICT

Holmes, Leake, Madison, & Yazoo Counties

Judge Robert G. Clark III P.O. Box 39, Lexington 39095 (662) 834-1285/f(662) 834-9688

Ct. Rept., Amanda B. Vanlandingham P.O. Box 39, Lexington 39095..... (662) 834-1285/f(662) 834-9688
 Ct. Admn., Sheila Lewis P.O. Box 39, Lexington 39095..... (662) 834-1285/f(662) 834-9688
 Staff Atty., Patricia Chatelain..... P.O. Box 39, Lexington 39095..... (662) 834-1285/f(662) 834-9688

Judge Cynthia Brewer..... P.O. Box 404, Canton 39046..... (601) 855-5512/f(601) 859-0795

Ct. Rept., Mary Helen Walden..... P.O. Box 404, Canton 39046..... (601) 855-5512/f(601) 859-0795
 Ct. Admn., Regina L. Ferguson..... P.O. Box 404, Canton 39046 (601) 855-5512/f(601) 859-0795
 Staff Atty., Megan F. Mawhorter P.O. Box 404, Canton 39046..... (601) 855-5512/f(601) 859-0795

Judge James C. Walker P.O. Box 404, Canton 39046.....(601) 855-5707/f(601) 859-0795

Ct. Rept., Tina Wilkinson P.O. Box 404, Canton 39046..... (601) 855-5745/f(601) 859-0795
 Ct. Admn., Susan Edgar..... P.O. Box 404, Canton 39046..... (601) 855-5707/f(601) 859-0795
 Staff Atty., Garrett Wilkerson P.O. Box 404, Canton 39046..... (601) 855-5746/f(601) 859-0795

12TH CHANCERY DISTRICT

Clarke & Lauderdale Counties

Judge Lawrence (Larry) Primeaux.... P.O. Box 5165, Meridian 39302..... (601) 482-9729/f(601) 486-4921

Ct. Rept., Cindy James..... P.O. Box 5165, Meridian 39302 (601) 482-9729/f(601) 486-4921
 Ct. Admn., Tawanna Wright P.O. Box 5165, Meridian 39302 (601) 482-9729/f(601) 486-4921
 Staff Atty., Jane Miller P.O. Box 5165, Meridian 39302 (601) 486-4920/f(601) 486-4921

Judge Charles E. (Charlie) Smith P.O. Box 386, Meridian 39302(601) 482-9729/f(601) 486-4921

Ct. Rept., Megan Wilson..... P.O. Box 386, Meridian 39302 (601) 482-9729/f(601) 486-4921
 Ct. Admn., Tawanna Wright P.O. Box 386, Meridian 39302 (601) 482-9729/f(601) 486-4921
 Staff Atty., Jane Miller P.O. Box 386, Meridian 39302 (601) 486-4920/f(601) 486-4921

13TH CHANCERY DISTRICT

Covington, Jefferson Davis, Lawrence, Simpson, & Smith Counties

Judge David Shoemake P.O. Box 1678, Collins 39428 (601) 765-8284/f(601) 765-8282

Ct. Rept., Susanne Eaton..... 503 Gambrell St., Taylorsville 39168..... (601) 765-8284/f(601) 765-8282
 Ct. Rept., Debbie Williams 18 Lee Mathis Cir., Collins 39428 (601) 765-8284/f(601) 765-8282
 Ct. Admn., Donna Walker..... P.O. Box 1678, Collins 39428 (601) 765-8284/f(601) 765-8282
 Law Clerk, Deborah Kennedy 2540 SCR18, Mize 39116..... (601) 765-8284/f(601) 765-8282

Judge Gerald Martin P.O. Box 325, Raleigh 39153..... (601) 822-5017/f(601) 822-5027

Ct. Rept., Susanne Eaton..... 503 Gambrell St., Taylorsville 39168..... (601) 822-5017/f(601) 822-5027
 Ct. Rept., Debbie Williams 18 Lee Mathis Cir., Collins 39428..... (601) 822-5017/f(601) 822-5027
 Ct. Admn., Cindy Bray P.O. Box 325, Raleigh 39153 (601) 822-5017/f(601) 822-5027
 Law Clerk, Deborah Kennedy 2540 SCR18, Mize 39116..... (601) 398-6593/f(601) 822-5027

14TH CHANCERY DISTRICT

Chickasaw, Clay, Lowndes, Noxubee, Oktibbeha, & Webster Counties

- Judge Paula Drungole-Ellis** 101 E. Main St., Starkville 39759 (662) 323-5130/f(662) 338-1068
 Ct. Rept., Susan L. Alford 400 Whitney Cv., Oxford 38655 (662) 323-5130/f(662) 339-1068
 Ct. Admn., Molly Jackson 101 E. Main St., Starkville 39759 (662) 323-5130/f(662) 338-1068
 Staff Atty., Patricia Rives P.O. Box 684, Columbus 39703 (662) 329-5844/f(662) 241-1913
- Judge Rodney Faver** 101 E. Main St., Starkville 39759 (662) 323-5130/f(662) 338-1068
 Ct. Rept., Leigh Pettit 442 E. Madison, Houston 38851 (662) 323-5130/f(662) 338-1068
 Ct. Admn., Molly Jackson 101 E. Main St., Starkville 39759 (662) 323-5130/f(662) 338-1068
 Staff Atty., Patricia Rives P.O. Box 684, Columbus 39703 (662) 329-5844/f(662) 241-1913
- Judge Joseph N. (Joe) Studdard** P.O. Box 684, Columbus 39703 (662) 329-5844/f(662) 241-1913
 Ct. Rept., Melissa Grimes P.O. Box 684, Columbus 39703 (662) 329-5844/f(662) 241-1913
 D. Ct. Admn., Cindy Strickland P.O. Box 684, Columbus 39703 (662) 329-5844/f(662) 241-1913
 Staff Atty., Patricia Rives P.O. Box 684, Columbus 39703 (662) 329-5844/f(662) 241-1913

15TH CHANCERY DISTRICT

Copiah & Lincoln Counties

- Judge Joseph Durr** P.O. Box 1356, Brookhaven 39602 (601) 835-3437/f(601) 835-3401
 Ct. Rept., Karee Mulholland P.O. Box 1356, Brookhaven 39602 (601) 835-3437/f(601) 835-3401
 Ct. Admn., Bethany Lewis P.O. Box 1356, Brookhaven 39602 (601) 835-3437/f(601) 835-3401
 Staff Atty., Michael Gleason P.O. Box 1356, Brookhaven 39602 (601) 835-3437/f(601) 835-3401

16TH CHANCERY DISTRICT

George, Greene, & Jackson Counties

- Judge Mark Maples** P.O. Box 998, Pascagoula 39568 (228) 769-3035/f(228) 769-3424
 Ct. Rept., Gina Thompson P.O. Box 998, Pascagoula 39568 (228) 769-3465/f(228) 769-3424
 Ct. Admn., Brooke Williams P.O. Box 998, Pascagoula 39568 (228) 769-3193/f(228) 769-3367
 D. Ct. Admn., Reba Parsley P.O. Box 998, Pascagoula 39568 (228) 769-3193/f(228) 769-3367
 Law Clerk III, Clare (Alex) Lowman P.O. Box 998, Pascagoula 39568 (228) 769-0474/f(228) 769-3189
 Secretary, Dawn Baxley P.O. Box 998, Pascagoula 39568 (228) 769-3035/f(228) 769-3424
- Judge Tanya Hasbrouck** P.O. Box 998, Pascagoula 39568 (228) 769-3036/f(228) 769-3189
 Ct. Rept., April Bordis P.O. Box 998, Pascagoula 39568 (228) 769-3454/f(228) 769-3400
 Asst. Ct. Admn., Brooke Williams P.O. Box 998, Pascagoula 39568 (228) 769-3193/f(228) 769-3367
 D. Ct. Admn., Reba Parsley P.O. Box 998, Pascagoula 39568 (228) 769-3193/f(228) 769-3367
 Law Clerk II, Clare (Alex) Lowman P.O. Box 998, Pascagoula 39568 (228) 769-0474/f(228) 769-3189
 Secretary, Tina Hill P.O. Box 998, Pascagoula 39568 (228) 769-3036/f(228) 769-3189
- Judge D. Neil Harris, Sr.** P.O. Box 998, Pascagoula 39568 (228) 769-3034/f(228) 769-3488
 Ct. Ct. Admn., Brooke Williams P.O. Box 998, Pascagoula 39568 (228) 769-3193/f(228) 769-3367
 D. Ct. Admn., Reba Parsley P.O. Box 998, Pascagoula 39568 (228) 769-3193/f(228) 769-3367
 Staff Atty., Joey Gerache P.O. Box 998, Pascagoula 39568 (228) 769-0596/No Fax
 Secretary, Brandy Mills P.O. Box 998, Pascagoula 39568 (228) 769-3034/f(228) 769-3488
 Ct. Rept., Linda McSwain P.O. Box 998, Pascagoula 39568 (228) 769-3462/No Fax

17TH CHANCERY DISTRICT

Adams, Claiborne, Jefferson, & Wilkinson Counties

- Judge E. Vincent Davis** 115 S. Wall St., Natchez 39120 (601) 442-7454/f(601) 445-7973
 Ct. Rept., Amanda Vanlandingham 115 S. Wall St., Natchez 39120 (601) 442-7454/f(601) 445-7973
 Ct. Rept., Leah Nations 115 S. Wall St., Natchez 39120 (601) 442-7454/f(601) 445-7973
 Ct. Admn., Carla Allgood 115 S. Wall St., Natchez 39120 (601) 442-7454/f(601) 445-7973
 Staff Atty., Bonnie Menapace 115 S. Wall St., Natchez 39120 (601) 442-7454/f(601) 445-7973
- Judge George Ward** 115 S. Wall St., Natchez 39120 (601) 442-7454/f(601) 445-7973
 Ct. Rept., Katie Northway 115 S. Wall St., Natchez 39120 (601) 442-7454/f(601) 445-7973
 Ct. Admn., Carla Allgood 115 S. Wall St., Natchez 39120 (601) 442-7454/f(601) 445-7973
 Staff Atty., Katie W. Freiberger 115 S. Wall St., Natchez 39120 (601) 442-7454/f(601) 445-7973

18TH CHANCERY DISTRICT

Benton, Calhoun, Lafayette, Marshall, & Tippah Counties

Judge Lawrence L. (Larry) Little	300 N. Lamar Blvd., Ste. 211, Oxford 38655 ...	(662) 236-0233/f(662) 234-6996
Ct. Rept., Tiffany Seawright	300 N. Lamar Blvd., Ste. 211, Oxford 38655 (662) 236-0233/f(662) 234-6996
Ct. Admin., Jennifer Kincaid	300 N. Lamar Blvd., Ste. 211, Oxford 38655 (662) 236-0233/f(662) 234-6996
Staff Atty., Tara Scruggs	300 N. Lamar Blvd., Ste. 211, Oxford 38655 (662) 236-0233/f(662) 234-6996
Judge Robert Q. Whitwell	P.O. Box 49, Oxford 38655	(662) 236-0233/f(662) 234-6996
Ct. Rept., Kathy C. Bruce	P.O. Box 888, Ripley 38663 (662) 236-0233/f(662) 234-6996
CAdmin., Jennifer Kincaid	P.O. Box 888, Ripley 38663 (662) 236-0233/f(662) 234-6996
Ct. Admn., Marsha Kisner	P.O. Box 49, Oxford 38655 (662) 236-0233/f(662) 234-6996
Staff Atty., Samantha Weathersbee	P.O. Box 49, Oxford 38655 (662) 236-0233/f(662) 234-6996

19TH CHANCERY DISTRICT

Jones & Wayne Counties

Judge Billie Graham	P.O. Box 1961, Laurel 39441	(601) 428-7625/f(601) 428-3119
Ct. Rept., Alana Blackledge	P.O. Box 1961, Laurel 39441 (601) 428-3625/f(601) 428-3119
Ct. Admn., Noelle McKinnon	P.O. Box 1961, Laurel 39441 (601) 428-7625/f(601) 428-3119
Staff Atty., Sarah McCormick	P.O. Box 1961, Laurel 39441 (601) 428-3637/f(601) 428-3119

20TH CHANCERY DISTRICT

Rankin County

Judge Troy Odom	P.O. Box 700, Brandon 39043	(601) 825-9208/No Fax
Ct. Rept., Miranda Schoggen	P.O. Box 700, Brandon 39043 (601) 825-9227/No Fax
Ct. Admn., Lori W. Hill	P.O. Box 700, Brandon 39043 (601) 825-9208/No Fax
Staff Atty., Sherrie Dewolf	P.O. Box 700, Brandon 39043 (601) 825-9226/No Fax
Judge John C. McLaurin, Jr	P.O. Box 700, Brandon 39043	(601) 591-4722/No Fax
Ct. Rept., Karen Hall	P.O. Box 700, Brandon 39043 (601) 591-4711/No Fax
Ct. Admn., Cindy Edwards	P.O. Box 700, Brandon 39043 (601) 591-4722/No Fax
Staff Atty., Sherrie Dewolf	P.O. Box 700, Brandon 39043 (601) 825-9226/No Fax
Judge Haydn J. Roberts	P.O. Box 700, Brandon 39043	(601) 824-2448/No Fax
Ct. Rept., Katelyn Berch	P.O. Box 700, Brandon 39043 (601) 824-2448/No Fax
Ct. Admn., Shanna Spann	P.O. Box 700, Brandon 39043 (601) 824-2448/No Fax
Staff Atty., Sherrie Dewolf	P.O. Box 700, Brandon 39043 (601) 825-9226/No Fax
Staff Atty., Frances Bowman	P.O. Box 700, Brandon 39043 (601) 591-4770/No Fax

DISTRICT ATTORNEYS

District 1 – John Weddle	P.O. Box 7237, Tupelo 38802	(662) 432-2800/f(662) 840-3751
District 2 – Crosby Parker	P.O. Box 1180, Gulfport 39502	(228) 865-4003/f(228) 865-4239
District 3 – Ben Creekmore	1301 Monroe Ave., Oxford 38655	(662) 234-3304/f(662) 234-0299
District 4 – W. Dewayne Richardson	P.O. Box 426, Greenville 38702	(662) 378-2105/f(662) 332-4665
District 5 – Doug Evans	P.O. Box 1262, Grenada 38902-1262	(662) 226-8545/f(662) 227-9558
District 6 – Shameca S. Collins	307 Market St., Natchez 39120	(601) 445-4099/f(601) 445-7947
District 7 – Jody Owens	P.O. Box 22747, Jackson 39225-2747	(601) 968-6568/f(601) 968-6655
District 8 – Steven S. Kilgore	P.O. Box 603, Philadelphia 39350	(601) 656-1991/f(601) 656-2287
District 9 – Richard (Ricky) Smith, Jr	P.O. Box 648, Vicksburg 39181	(601) 636-5754/f(601) 636-8664
District 10 – Kassie Coleman	P.O. Box 5163, Meridian 39302	(601) 482-9757/f(601) 483-0085
District 11 – Brenda F. Mitchell	P.O. Box 848, Cleveland 38732	(662) 843-8000/f(662) 846-1711
District 12 – Lin Carter	P.O. Box 166, Hattiesburg 39403-0166	(601) 545-1551/f(601) 545-6097
District 13 – Chris Hennis	100 Court Ave., Ste. 4, Mendenhall 39114	(601) 847-1342/f(601) 847-3428
District 14 – Dewitt (Dee) T. Bates, Jr.	223 West Bay St., Magnolia 39652	(601) 783-6677/f(601) 783-5646
District 15 – Hal Kittrell	500 Courthouse Sq., Ste. 3, Columbia 39429	(601) 731-1476/f(601) 731-1489
District 16 – Scott Colom	P.O. Box 1044, Columbus 39703	(662) 329-5911/f(662) 327-1854

District 17 – John W. Champion365 Loshier St., Ste. 210, Hernando 38632 ... (662) 469-8014/f(662) 469-8231
District 18 – Anthony J. Buckley..... P.O. Box 313, Laurel 39441..... (601) 649-4606/f(601) 428-3191
District 19 – Angel Myers McIlrathP.O. Box 1756, Pascagoula 39568-1756 (228) 769-3045/f(228) 769-3345
District 20 – John K. Bramlett, Jr.P.O. Box 68, Brandon 39043..... (601) 825-1472/f(601) 825-9605
District 21 – Akillie Malone Oliver P.O. Box 311, Durant 39063 (662) 653-3191/f(662) 653-6723
District 22 – Daniella M. Shorter P.O. Drawer 767, Hazlehurst 39083 (601) 894-5040/f(601) 894-9080

COUNTY COURT JUDGES

County Courts have exclusive jurisdiction over eminent domain proceedings and juvenile matters, among other things. In counties which have a County Court, a County Court judge also serves as the Youth Court judge. County Courts share jurisdiction with Circuit and Chancery Courts in some civil matters. The jurisdictional limit of County Courts is up to \$200,000. County Courts may handle non-capital felony cases transferred from Circuit Court. County Court judges may issue search warrants, set bond and preside over preliminary hearings. County Courts have concurrent jurisdiction with Justice Courts in all matters, civil and criminal.

Mississippi has 22 County Courts and 30 County Court judges. Counties which have a County Court include Adams, Bolivar, Coahoma, DeSoto, Forrest, Hancock, Harrison, Hinds, Jackson, Jones, Lamar, Lauderdale, Lee, Leflore, Lowndes, Madison, Pearl River, Pike, Rankin, Warren, Washington, and Yazoo. County Court judges serve four-year terms. Elections are non-partisan.

ADAMS

Judge Walt Brown 115 S. Wall St., Natchez 39120.....(601) 445-7933/f(601) 445-2369
 Ct. Reporter, Diane Stringer P.O. Box 365, McComb 39649 (601) 248-3054/f(601) 445-2369
 Ct. Admn., Martha Griffin..... 115 S. Wall St., Natchez 39120 (601) 445-7933/(601) 442-6416
f(601) 445-2369

BOLIVAR

Judge Hunter Nowell..... P.O. Box 188, Cleveland 38732 (662) 843-7175/f(662) 843-5337
 Ct. Reporter, Angela McLaughlin..... P.O. Box 188, Cleveland 38732 (662) 843-7175/No Fax
 Ct. Admn., Courtney L. Flore..... P.O. Box 188, Cleveland 38732 (662) 843-7175/No Fax

COAHOMA

Judge C. Kent Haney P.O. Box 756, Clarksdale 38614.....(662) 624-3046/f(662) 351-0576
 Ct. Reporter, Rhodes Shaffett..... P.O. Box 756, Clarksdale 38614 (662) 624-3046/f(662) 624-3075
 Ct. Admn., Rhodes Shaffett P.O. Box 756, Clarksdale 38614 (662) 624-3036/f(662) 624-3075

DESOTO

Judge, Place 1...Allen B. Couch, Jr.... 2535 Hwy. 51 S., Rm. 200, Hernando 38632. . (662) 469-8316/f(662) 469-8318
 Ct. Reporter, Michelle Brown..... 2535 Hwy. 51 S., Rm. 200, Hernando 38632(662) 292-2802/f(662) 469-8318
 Ct. Admn., Leigh Ann Johnson..... 2535 Hwy. 51 S., Rm. 200, Hernando 38632(662) 469-8317/f(662) 469-8318
Judge, Place 2 ... Craig Treadway..... 311 W. South St., Ste. D, Hernando 38632(662) 469-8336/f(662) 469-7886
 Ct. Reporter, Marsha Allred..... 311 W. South St., Ste. D, Hernando 38632(662) 469-8336/f(662) 469-8337
 Ct. Admn., Rikki Ogle 311 W. South St., Ste. D, Hernando 38632 (662) 469-8336/f(662) 469-8337

FORREST

Judge Carol Jones Russell P.O. Box 190, Hattiesburg 39403.....(601) 545-6075/f(601) 545-6105
 Ct. Reporter, Kathy Zebert P.O. Box 190, Hattiesburg 39403 (601) 545-6075/f(601) 545-6105
 Ct. Admn., Robyn Day P.O. Box 190, Hattiesburg 39403 (601) 545-6075/f(601) 545-6105
 Youth Ct. Admn., Sarah Hoda P.O. Box 190, Hattiesburg 39403(601) 545-6185

HANCOCK

Judge S. Trent Favre126 Court St., Bay St. Louis 39520(228) 467-7945/f(228) 466-4707
 Ct. Reporter, Crystal Morris 126 Court St., Bay St. Louis 39520.....(228) 467-7945/f(228) 466-4707
 Ct. Admn., Valerie Ladner 152 Main St., Ste. B, Bay St. Louis 39520. (228) 467-5265/f(228) 467-2779

HARRISON

Judge, Place 1...Gaston H. Hewes, Jr.... P.O. Box 973, Gulfport 39502(228) 865-4025/f(228) 865-4178
 Ct. Reporter, Natasha Perkins P.O. Box 1461, Gulfport 39502(228) 865-4017/f(228) 865-4178
 Ct. Admn., Sabrina Landry P.O. Box 1461, Gulfport 39502(228) 865-4175/f(228) 865-4178

Judge, Place 2...Robin Alfred Midcalf... P.O. Box 1889, Gulfport 39502(228) 865-4109/f(228) 865-4485
 Ct. Reporter, Amanda Schmitt P.O. Box 1889, Gulfport 39502(228) 865-4177/f(228) 865-4485
 Ct. Admn., Chandra Moore P.O. Box 1889, Gulfport 39502(228) 865-4109/f(228) 865-4485

Judge, Place 3 ...Mike Dickinson..... P.O. Box 134, Biloxi 39533(228) 435-3201/f(228) 435-4784
 Ct. Reporter, Susan Bailey P.O. Box 134, Biloxi 39533(228) 435-3201/f(228) 435-4784
 Ct. Admn., Valeri Underwood P.O. Box 134, Biloxi 39533(228) 435-3201/f(228) 435-4784

HINDS**Judge, Subdistrict 1**

Carlyn M. Hicks..... P.O. Box 973, Gulfport 39502(228) 865-4025/f(228) 865-4178
 Ct. Reporter, Sara Simms P.O. Box 327, Jackson 39205(601) 968-6668/f(601) 973-5575
 Ct. Admn., Paula Cable P.O. Box 327, Jackson 39205(601) 968-6647/f(601) 973-5575
 D. Ct. Admn., Carolyn Brown P.O. Box 327, Jackson 39205(601) 968-6648/f(601) 973-5575

Judge, Subdistrict 2

LaRita Cooper-Stokes..... P.O. Box 327, Jackson 39205(601) 968-6663/f(601) 973-5575
 Ct. Reporter, Pearlie Westmoreland ... P.O. Box 327, Jackson 39205(601) 968-6664/f(601) 973-5575
 Ct. Admn., Paula Cable P.O. Box 327, Jackson 39205(601) 968-6647/f(601) 973-5575
 D. Ct. Admn., Carolyn Brown P.O. Box 327, Jackson 39205(601) 968-6648/f(601) 973-5575

Judge, Subdistrict 3

Johannie McDaniels P.O. Box 327, Jackson 39205.....(601) 985-3000/f(601) 985-3080
 Ct. Reporter, Mary Rogers P.O. Box 327, Jackson 39205(601) 968-6678/f(601) 973-5575
 Ct. Admn., Angela Cook 940 E. McDowell Rd., Jackson 39204(601) 985-3010/f(601) 985-3080
 D. Ct. Admn., Regina Price..... 940 E. McDowell Rd., Jackson 39204(601) 985-3021/f(601) 985-3080

JACKSON

Judge, Place 1...Sharon W. Sigalas.... 4903 Telephone Rd., Pascagoula 39567 ... (228) 762-7370/f(228) 762-7385
 Ct. Admn., Elizabeth Keenan 4903 Telephone Rd., Pascagoula 39567(228) 762-7370/f(228) 762-738 5
 Ct. Admn., Jamie Peoples..... 4903 Telephone Rd., Pascagoula 39567(228) 762-7370/f(228) 762-738 5
 Ct. Reporter, Cheryl Sablich 4903 Telephone Rd., Pascagoula 39567(228) 762-7370/f(228) 762-738 5

Judge, Place 2 ...Mark Watts P.O. Box 998, Pascagoula 39568(228) 769-3037/f(228) 769-3484
 Ct. Reporter, Lisa Brown P.O. Box 998, Pascagoula 39568.....(228) 769-3037/f(228) 769-3484
 Ct. Admin., DeAnna Cook..... P.O. Box 998, Pascagoula 39568(228) 769-3037/f(228) 769-3484

JONES

Judge M. Wayne Thompson 5170 Hwy. 11 N., Ellisville 39437(601) 649-7500/f(601) 649-7500
 Ct. Admin., Vanessa Cranford..... 5170 Hwy. 11 N., Ellisville 39437(601) 649-7500
 Ct. Reporter, Lyn W. Sherman 5170 Hwy. 11 N., Ellisville 39437.....(601) 649-7500/f(601) 649-8009

LAMAR

Judge Brad Touchstone..... P.O. Box 307, Purvis 39475.....(601) 794-3468/f(601) 794-3477
 Ct. Reporter, Amy Little P.O. Box 307, Purvis 39475.....(601) 794-3468/f(601) 794-3477
 Ct. Admn., Ruth Mossor P.O. Box 307, Purvis 39475.....(601) 794-3468/f(601) 794-3477
 D. Ct. Admn., Lacey Hill P.O. Box 307, Purvis 39475.....(601) 794-3468/f(601) 794-3477

LAUDERDALE

Judge, Place 1

Veldore F. Young-Graham P.O. Box 1549, Meridian 39302 (601) 482-9756/f(601) 486-4940
Ct. Admn., Heather Miles 500 Constitution Ave., Meridian 39301 (601) 482-9756
Ct. Reporter, Shirley Aikens 500 Constitution Ave., Meridian 39301 (601) 482-9756/f(601) 486-4940

Judge, Place 2

Lisa Howell P.O. Box 1549, Meridian 39302 (601) 482-9756/f(601) 486-4940
Ct. Admn., Heather Miles 500 Constitution Ave., Meridian 39301 (601) 482-9756
Ct. Reporter, Jackie Wahler 501 Constitution Ave., Meridian 39301 (601) 482-9756/f(601) 486-4940

LEE

Judge, Place 1

Staci Shumpert Bevill..... P.O. Box 736, Tupelo 38802(662) 432-2340/f(662) 841-7941
Ct. Admn., Jamie Johnson P.O. Box 736, Tupelo 38802(662) 432-2340/f(662) 841-7941
Ct. Reporter, Cecily Faulkner P.O. Box 736, Tupelo 38802(662) 432-2343/f(662) 841-9732

Judge, Place 2

James D. Moore..... P.O. Box 736, Tupelo 38802 (662) 432-2343
Ct. Admn., Dee Eleopoulos P.O. Box 736, Tupelo 38802 (662) 432-2343
Ct. Reporter, Cecily Faulkner P.O. Box 736, Tupelo 38802 (662) 432-2343

LEFLORE

Judge Kevin A. Adams..... P.O. Box 452, Greenwood 38935-0452(662) 455-7945/f(662) 453-0869
Ct. Reporter, Jennifer Flautt..... P.O. Box 452, Greenwood 38935-0452(662) 455-7945/f(662) 453-0869
Ct. Admn., Thelma Donley..... P.O. Box 452, Greenwood 38935-0452 (662) 455-7945/f(662) 453-0869

LOWNDES

Judge Allison Pritchard Kizer P.O. Box 1829, Columbus 39703(662) 329-5940/f(662) 329-3316
Ct. Admn./Rept., Fran Cooper..... P.O. Box 1829, Columbus 39703..... (662) 329-5940/f(662) 329-3316

MADISON

Judge, Place 1...Staci O'Neal..... P.O. Box 1626, Canton 39046.....(601) 855-5626/f(601) 855-5706
Ct. Reporter, Laurie Abraham P.O. Box 1626, Canton 39046(601) 855-5550/f(601) 855-5706
Ct. Admn./Staff Atty., Lindsay Johnson... P.O. Box 1626, Canton 39046(601) 855-5626/f(601) 855-5706

Judge, Place 2...Edwin Y. Hannan... P.O. Box 1626, Canton 39046.....(601) 855-5626/f(601) 855-5706
Ct. Reporter, Lisha Edwards..... P.O. Box 1626, Canton 39046(601) 855-5636/f(601) 855-5706
Ct. Admn./Staff Atty., Lindsay Johnson... P.O. Box 1626, Canton 39046..... (601) 855-5626/f(601) 855-5706

PEARL RIVER

Judge Richelle Lumpkin..... P.O. Box 1746, Picayune 39466.....(601) 749-7720/f(601) 749-7725
Ct. Reporter, Ashley Lee P.O. Box 1746, Picayune 39466.....(601) 749-7720/f(601) 749-7725
Ct. Admn., Tonya Tynes P.O. Box 1746, Picayune 39466(601) 749-7720/f(601) 749-7725
Ct. Admn., Ashley Lee P.O. Box 1746, Picayune 39466..... (601) 749-7720/f(601) 749-7725

PIKE

Judge John Price..... 101 N. Cherry St., Magnolia 39652(601) 783-2262/f(601) 783-5185
Ct. Reporter, Marla Elmer 101 N. Cherry St., Magnolia 39652(601) 783-2262/f(601) 783-5185
Ct. Admn., Sue Moak 101 N. Cherry St., Magnolia 39652(601) 783-2262/f(601) 783-5185

RANKIN

Judge, Place 1...Kent McDaniel215 E. Government St., Brandon 39042..... (601) 824-2403/f(601) 824-2441
Ct. Reporter, Debbie Denny P.O. Box 1599, Brandon 39043(601) 824-2403/f(601) 824-2441
Ct. Admn., Anita Payne..... P.O. Box 1599, Brandon 39043(601) 824-2403/f(601) 824-2441

Judge, Place 2..Thomas H. Broome...100 Court Cv., Pelahatchie 39145.....(601) 824-2545/f(601) 591-4788
 Ct. Admn., Paul Bowen 100 Court Cv., Pelahatchie 39145.....(601) 824-2545/f(601) 591-4788
 D. Ct. Admn., Katrina Phillips..... 100 Court Cv., Pelahatchie 39145.....(601) 824-2551/f(601) 591-4788

WARREN

Judge Marcie T. Southerland. P.O. Box 351, Vicksburg 39181.....(601) 638-8026/f(601) 631-8816
 Ct. Reporter, Robin McGee..... P.O. Box 351, Vicksburg 39181.....(601) 638-8026/f(601) 631-8816
 Ct. Admn., Sherry Barnett P.O. Box 351, Vicksburg 39181.....(601) 638-8026/f(601) 631-8816

WASHINGTON

Judge Vernita King Johnson..... P.O. Box 816, Greenville 38702(662) 334-2657/f(662) 390-4764
 Ct. Admn., Tanesha Taylor P.O. Box 816, Greenville 38702(662) 334-2657/f(662) 390-4764
 Ct. Reporter, Vikki Kite P.O. Box 816, Greenville 38702(662) 334-2657/f(662) 390-4764

YAZOO

Judge Mary Barnette Cotton P.O. Box 1437, Yazoo City 39194(662) 746-5214/f(662) 746-9865
 Ct. Reporter, Debbie Nelson..... P.O. Box 1437, Yazoo City 39194(662) 746-5214/f(662) 746-9865
 Ct. Admn., Nancy Wilkinson P.O. Box 1437, Yazoo City 39194(662) 746-5214/(662) 746-9865

JUSTICE COURT JUDGES

Justice Courts have jurisdiction over small claims civil cases involving amounts of \$3,500 or less, misdemeanor criminal cases and any traffic offense that occurs outside a municipality. Justice Court judges may conduct bond hearings and preliminary hearings in felony criminal cases and may issue search warrants.

There are 82 Justice Courts with 197 judges. Justice Court judges are the only Mississippi judges elected in partisan races. They serve four-year terms.

ADAMS

District 1 – Audrey B. Minor 114 S. Wall St., Natchez 39120.....(601) 442-0199/f(601) 445-7902
 District 2 – Eileen M. Maher 114 S. Wall St., Natchez 39120.....(601) 442-0199/f(601) 445-7902

ALCORN

Post 1 – Jeremy Blaylock P.O. Box 226, Corinth 38835.....(662) 286-7777
 Post 2 – Jimmy McGee P.O. Box 226, Corinth 38835.....(662) 286-7777/f(662) 286-2157

AMITE

North – Roger Arnold P.O. Box 362, Liberty 39645.....(601) 657-4527/f(601) 657-8604
 South – Gloria Perry P.O. Box 362, Liberty 39645.....(601) 657-4527/f(601) 657-8604

ATTALA

East – Robert T. (Bob) Jordan 254 Hwy. 12 W., Kosciusko 39090.....(662) 289-7272
 West – Rosie Massey Sample 254 Hwy. 12 W., Kosciusko 39090.....(662) 289-7272

BENTON

North – Brody Childers P.O. Box 152, Ashland 38603(662) 224-4866/f(662) 224-6313
 South – Gary McBride P.O. Box 152, Ashland 38603(662) 224-6320/f(662) 224-6313

BOLIVAR

District 1 – Harold Ward, Sr. P.O. Box 1507, Cleveland 38732(662) 843-4008/No Fax
 District 2 – James Strait P.O. Box 1507, Cleveland 38732(662) 843-4008/No Fax
 District 3 – Betty J. Taylor..... P.O. Box 1507, Cleveland 38732(662) 843-4008/f(662) 846-6783

CALHOUN

Post 1 – Mark Ferguson..... P.O. Box 7, Pittsboro 38951..... (662) 412-3134/No Fax
Post 2 – Jimmy Vance P.O. Box 7, Pittsboro 38951..... (662) 412-3134/No Fax

CARROLL

District 1 – Shonna McGehee P.O. Box 26, Carrollton 38917 (662) 237-9699/f(662) 237-9799
District 2 – Mary Jane King P.O. Box 474, Vaiden 39176 (662) 464-8868/f(662) 464-8824

CHICKASAW

Post 1 – Garry Turner..... 1 Pinson Square Rd., Houston 38851 (662) 456-3941/f(662) 448-8122
Post 2 – Judy Posey..... 234 W. Main St., Rm. 207, Okolona 38860.. (662) 447-3402/f(662) 447-5020

CHOCTAW

Post 1 – William Stephenson..... 140 Jail House Rd., Ackerman 39735 (662) 285-3599/f(662) 285-9039
Post 2 – Teresa Weeks 140 Jail House Rd., Ackerman 39735 (662) 285-3599/f(662) 285-9039

CLAIBORNE

East – Mary C. Curry P.O. Box 497, Port Gibson 39150 (601) 437-4478/f(601) 437-4430
West – Mareesha Odom..... P.O. Box 497, Port Gibson 39150 (601) 437-9005/f(601) 437-9015

CLARKE

Place 1 – Tobey Bartee..... P.O. Box 4, Quitman 39355 (601) 776-5371/f(601) 776-1014
Place 2 – Terry Bonner P.O. Box 4, Quitman 39355 (601) 776-5371/f(601) 776-1014

CLAY

District 1 – Thomas G. Hampton P.O. Box 674, West Point 39773 (662) 494-6141/f(662) 494-4034
District 2 – Chris McBrayer P.O. Box 674, West Point 39773 (662) 494-6141/f(662) 494-4034

COAHOMA

North – A. Burks Rogers..... 1 Justice Dr., Clarksdale 38614 (662) 627-2241
South – Derek D. Hopson, Jr..... 1 Justice Dr., Clarksdale 38614 (662) 624-3060

COPIAH

Post 1 – Teresa G. Bozeman P.O. Box 798, Hazlehurst 39083 (601) 892-7796/f(601) 894-4573
Post 2 – Vicki Bass Ramsey..... P.O. Box 798, Hazlehurst 39083 (601) 892-7796/f(601) 894-4573

COVINGTON

North – Bobby Wayne Mooney P.O. Box 665, Collins 39428 (601) 765-6581/f(601) 765-5014
South – John Laz Sanford..... P.O. Box 665, Collins 39428 (601) 765-6581/f(601) 765-5014

DESOTO

District 1 – Kenneth Adams..... 8525 Hwy. 51 N., Southaven 38671 (662) 469-8026/f(662) 469-8825
District 2 – Larry Vaughn 8525 Hwy. 51 N., Southaven 38671 (662) 469-8026/f(662) 469-8825
District 3 – William H. Lantrip 8525 Hwy. 51 N., Southaven 38671 (662) 469-8026/f(662) 469-8825
District 4 – Brad Russell 8525 Hwy. 51 N., Southaven 38671 (662) 469-8026/f(662) 469-8825
District 5 – Karen Sanders Carter 8525 Hwy. 51 N., Southaven 38671 (662) 469-8026/f(662) 469-8825

FORREST

Post 1 – Wes Curry 700 Main St., Hattiesburg 39401 (601) 544-3136/f(601) 545-6114
Post 2 – Zachary M. Vaughn..... 700 Main St., Hattiesburg 39401 (601) 544-3136/f(601) 545-6114
Post 3 – Gay Polk-Payton 700 Main St., Hattiesburg 39401 (601) 544-3136/f(601) 545-6114
Post 4 – Robert Davis 700 Main St., Hattiesburg 39401 (601) 544-3136/f(601) 545-6114

FRANKLIN

Post – Rickey O’Quinn..... P.O. Box 365, Meadville 39653 (601) 384-2002/No Fax
Post – Larry Wallace P.O. Box 365, Meadville 39653 (601) 384-2002/No Fax

GEORGE

District 1 – Mike Bullock..... 368 Cox St., Lucedale 39452(601) 947-4834/f(601) 947-1911
 District 2 – Martin A. Seib 368 Cox St., Lucedale 39452(601) 947-4834/f(601) 947-1911

GREENE

Post 1 – Jeff Byrd P.O. Box 547, Leakesville 39451(601) 394-2347/f(601) 394-2114
 Post 2 – Shannon Busby P.O. Box 547, Leakesville 39451(601) 394-2347/f(601) 394-2114

GRENADA

East – Leon Williamson 16 First St., Grenada 38901(662) 226-3331/f(662) 227-5513
 West – Jimmy Tallant..... 16 First St., Grenada 38901(662) 226-3331/f(662) 227-5513

HANCOCK

Place 1 – Desmond Hoda 8450 Hwy. 90, Bay St. Louis 39520.....(228) 467-5573/f(228) 255-5851
 Place 2 – Brian S. Necaize 8450 Hwy. 90, Bay St. Louis 39520.....(228) 467-5573/f(228) 255-5851
 Place 3 – Eric Moran 8450 Hwy. 90, Bay St. Louis 39520.....(228) 467-5573/f(228) 255-5851

HARRISON

District 1 – Albert Fountain..... P.O. Box 1141, Biloxi 39533(228) 435-8254/No Fax
 District 2 – Brandon Ladner P.O. Box 1754, Gulfport 39502(228) 865-4199/No Fax
 District 3 – Dianne Ladner..... P.O. Box 1754, Gulfport 39502(228) 865-4218/No Fax
 District 4 – Melvin J. Ray P.O. Box 1754, Gulfport 39502(228) 865-4215/No Fax
 District 5 – Nick Patano..... P.O. Box 1141, Biloxi 39533(228) 435-8256/No Fax

HINDS

District 1 – Don Palmer P.O. Box 3490, Jackson 39207(601) 965-8800/No Fax
 District 2 – Tabitha Britton-Porter..... P.O. Box 3490, Jackson 39207(601) 965-8800/No Fax
 District 3 – Frank L. Sutton, Sr..... P.O. Box 3490, Jackson 39207(601) 965-8800/No Fax
 District 4 – Kenny W. Lewis P.O. Box 3490, Jackson 39207(601) 965-8800/No Fax
 District 5 – Pearlie Brown Owens..... P.O. Box 3490, Jackson 39207(601) 965-8800/No Fax

HOLMES

District 1 – Shirley Neal..... P.O. Box 99, Lexington 39095.....(662) 834-4565/f(662) 834-1402
 District 2 – Marcus Fisher..... P.O. Box 99, Lexington 39095.....(662) 834-4565/f(662) 834-1402

HUMPHREYS

North – Abraham Gates 102 Castleman St., Belzoni 39038(662) 247-4337/f(662) 247-1095
 South – Shirley Brown-Cummings..... 102 Castleman St., Belzoni 39038(662) 247-4337/f(662) 247-1095

ISSAQUENA

Post 1 – Jeffrey Bunton Coleman..... P.O. Box 58, Mayersville 39113(662) 873-6287/f(662) 873-2094
 Post 2 – Tommy Williams P.O. Box 58, Mayersville 39113(662) 873-6287/f(662) 873-2094

ITAWAMBA

East – Harold Holcomb..... 304 W. Wiygul St., Ste. D, Fulton 38843(662) 862-4315/f(662) 862-5805
 West – John Bishop..... 304 W. Wiygul St., Ste. D, Fulton 38843(662) 862-4315/f(662) 862-5805

JACKSON

District 1 – Matt Lachaussee 5343 Jefferson St., Moss Point 39563(228) 769-3081/f(228) 769-3364
 District 2 – Cornelius Seaton (Int.) 5343 Jefferson St., Moss Point 39563(228) 769-3083/f(228) 769-3364
 District 3 – Jason Thornton 5343 Jefferson St., Moss Point 39563(228) 769-3082/f(228) 769-3364
 District 4 – Danny Guice III..... 5343 Jefferson St., Moss Point 39563(228) 769-3190/f(228) 769-3364

JASPER

District 1 – Sullivan Dukes, Jr..... P.O. Box 39, Paulding 39348(601) 727-2247/f(601) 764-2246
District 2 – J. Marvin Jones..... P.O. Box 1054, Bay Springs 39422.....(601) 764-2065/f(601) 764-3402

JEFFERSON

District 1 – Marcus Walton P.O. Box 1047, Fayette 39069..... (601) 786-8594/f(601) 786-6017
District 2 – James E. Oliver P.O. Box 1047, Fayette 39069..... (601) 786-8594/f(601) 786-6017
Post 1 – Ronnie Barnes..... P.O. Box 1407, Prentiss 39474..... (601) 792-5129/f(601) 792-5980
Post 2 – Calvin Graves..... P.O. Box 1407, Prentiss 39474..... (601) 792-5129/f(601) 792-5980

JONES

District 1 – C. Grant Hedgepeth 5180 Hwy. 11 N., Ellisville 39437 (601) 428-3137/No Fax
District 2 – Sonny Saul 5180 Hwy. 11 N., Ellisville 39437 (601) 428-3137/No Fax
District 3 – David Lyons..... 5180 Hwy. 11 N., Ellisville 39437 (601) 428-3137/No Fax

KEMPER

Post 1 – Mary Gully P.O. Box 661, DeKalb 39328 (601) 743-2793/f(601) 743-4893
Post 2 – Linda Sciple Wright..... P.O. Box 661, DeKalb 39328 (601) 743-2793/f(601) 743-4893

LAFAYETTE

North – Carolyn Pettis Bell..... 713 Jackson Ave., Oxford 38655 (662) 234-7659/f(662) 238-7990
Central – Mickey Avent 713 Jackson Ave., Oxford 38655 (662) 234-1545/f(662) 238-7990
South – Johnny Wayne McLarty..... 713 Jackson Ave., Oxford 38655 (662) 234-1545/f(662) 238-7990

LAMAR

Post 1 – Bill Anderson P.O. Box 1010, Purvis 39475 (601) 794-2950/f(601) 794-1076
Post 2 – Denton Plumlee P.O. Box 1010, Purvis 39475 (601) 794-2950/f(601) 794-1076
Post 3 – Charles Greer P.O. Box 1010, Purvis 39475 (601) 794-2950/f(601) 794-1076

LAUDERDALE

District 1 – Richard (Ricky) L. Roberts... P.O. Box 5126, Meridian 39302 (601) 482-9874/f(601) 482-9813
District 2 – Ondray M. Harris, Sr. P.O. Box 5126, Meridian 39302 (601) 482-9874/f(601) 482-9813
District 3 – Paul Earley P.O. Box 5126, Meridian 39302 (601) 482-9874/f(601) 482-9813
District 4 – Buck Roberts P.O. Box 5126, Meridian 39302 (601) 482-9874/f(601) 482-9813

LAWRENCE

Post 1 – Albert Turnage P.O. Box 903, Monticello 39654 (601) 587-4854/f(601) 587-0755
Post 2 – Donald Glenn Mullins..... P.O. Box 903, Monticello 39654 (601) 587-4854/f(601) 587-0755

LEAKE

East – Johnny Pope P.O. Box 69, Carthage 39051 (601) 267-5677/f(601) 267-6134
West – Ruby Graham P.O. Box 69, Carthage 39051 (601) 267-5677/f(601) 267-6134

LEE

District 1 – Charles (Chuck) Hopkins.. P.O. Box 108, Tupelo 38802..... (662) 432-2551/f(662) 680-6021
District 2 – Marilyn Reed P.O. Box 108, Tupelo 38802..... (662) 432-2551/f(662) 680-6021
District 3 – Phyllis Maharrey Dye P.O. Box 108, Tupelo 38802..... (662) 432-2553/f(662) 680-6021
District 4 – Anthony Rogers P.O. Box 108, Tupelo 38802..... (662) 432-2554/f(662) 680-6021

LEFLORE

Central – James Littleton..... P.O. Box 8056, Greenwood 38935..... (662) 453-1605/f(662) 455-8759
North – Jim Campbell..... P.O. Box 8056, Greenwood 38935..... (662) 453-1605/f(662) 455-8759
South – Carlos Palmer P.O. Box 8056, Greenwood 38935..... (662) 453-1605/f(662) 455-8759

LINCOLN

Post 1 – Ian Smith P.O. Box 767, Brookhaven 39602(601) 835-3474/f(601) 835-3494
 Post 2 – Roger Martin P.O. Box 767, Brookhaven 39602(601) 835-3474/f(601) 835-3494

LOWNDES

District 1 – Chris Hemphill 11 Airline Rd., Columbus 39702.....(662) 329-5929/f(662) 245-4619
 District 2 – Ron Cooke 11 Airline Rd., Columbus 39702.....(662) 329-5929/f(662) 245-4619
 District 3 – Peggy G. Phillips 11 Airline Rd., Columbus 39702.....(662) 329-5929/f(662) 245-4619

MADISON

District 1 – Marsha Weems Stacey 2961 S. Liberty, Canton 39046(601) 859-6337/f(601) 859-2570
 District 2 – Martina Griffin..... 2961 S. Liberty, Canton 39046(601) 859-6337/f(601) 859-2570
 District 3 – Lloyd G. Spivey III 2961 S. Liberty, Canton 39046(601) 859-6337/f(601) 859-2570
 District 4 – Bruce McKinley..... 2961 S. Liberty, Canton 39046(601) 859-6337/f(601) 859-2570

MARION

Post 1 – Brandon Paul Rowell 500 Courthouse Sq., Ste. 2, Columbia 39429(601) 736-2572/f(601) 731-3781
 Post 2 – Gwen Broom..... 500 Courthouse Sq., Ste. 2, Columbia 39429(601) 736-2572/f(601) 731-3781

MARSHALL

North – Mae Garrison P.O. Drawer 729, Holly Springs 38635.....(662) 252-3585/f(662) 252-0028
 South – Cathy Elliott Brittenum P.O. Drawer 729, Holly Springs 38635.....(662) 252-3585/f(662) 252-0028

MONROE

District 1 – Sarah Cline Stevens P.O. Box 518, Amory 38821(662) 256-8493/f(662) 256-7876
 District 2 – Brandon Davis P.O. Box 518, Amory 38821(662) 256-8493/f(662) 256-7876
 District 3 – Adrian McIntosh Haynes .. P.O. Box 518, Amory 38821(662) 256-8493/f(662) 256-7876

MONTGOMERY

District 1 – Keith Stokes Roberts P.O. Box 229, Winona 38967(662) 283-2290/f(662) 283-2052
 District 2 – Larry E. Bamberg P.O. Box 229, Winona 38967(662) 283-2290/f(662) 283-2052

NESHOBA

Place 1 – Paul Payne 200 Byrd Ave., Philadelphia 39350(601) 650-3584/f(601) 656-6482
 Place 2 – Johnathan Spears..... 200 Byrd Ave., Philadelphia 39350(601) 656-4053/f(601) 656-6482

NEWTON

District 1 – Scott Round P.O. Box 69, Decatur 39327(601) 635-2740/f(601) 635-4047
 District 2 – Justin K. Chaney P.O. Box 69, Decatur 39327(601) 635-2740/f(601) 635-4047

NOXUBEE

North – Dorothy Stewart P.O. Box 550, Macon 39341(662) 726-5834/f(662) 726-2944
 South – Shirley Moore-Blakley..... P.O. Box 550, Macon 39341(662) 726-5834/f(662) 726-2944

OKTIBBEHA

District 1 – William A. Boykin, Jr. 104 Felix Long Dr., Starkville 39759(662) 324-3032/f(662) 388-1078
 District 2 – Larnzy Carpenter, Jr. 104 Felix Long Dr., Starkville 39759(662) 324-3032/f(662) 388-1078
 District 3 – C. Marty Haug 104 Felix Long Dr., Starkville 39759(662) 324-3032/f(662) 388-1078

PANOLA

Post 1 – Mike Wilson P.O. Box 249, Sardis 38666.....(662) 487-2080/f(662) 487-2008
 Post 2 – Michael Darby P.O. Box 249, Sardis 38666.....(662) 487-2080/f(662) 487-2008

PEARL RIVER

North – James Hal Breland..... 153 Savannah-Millard Rd., Ste. A, Poplarville 39470. (601) 403-2500/f(601) 403-2553
Southeast – Donald Fail 153 Savannah-Millard Rd., Ste. A, Poplarville 39470. (601) 403-2500/f(601) 403-2553
Southwest – John Mark Mitchell..... 153 Savannah-Millard Rd., Ste. A, Poplarville 39470. (601) 403-2500/f(601) 403-2553

PERRY

District 1 – Tim Odom P.O. Box 455, New Augusta 39462(601) 964-8366/f(601) 964-8368
District 2 – Carl Griffin P.O. Box 455, New Augusta 39462(601) 964-8366/f(601) 964-8368

PIKE

Central – Melvin Hollins..... P.O. Box 509, Magnolia 39652..... (601) 783-5333/f(601) 783-4181
North – Fulton Dickerson Brewer P.O. Box 509, Magnolia 39652..... (601) 783-5333/f(601) 783-4181
South – Aubrey P. Rimes..... P.O. Box 509, Magnolia 39652..... (601) 783-5333/f(601) 783-4181

PONTOTOC

East – David A. Hall 29 E. Washington, Pontotoc 38863..... (662) 489-3920/f(662) 489-2986
West – Scottie Harrison..... 29 E. Washington, Pontotoc 38863..... (662) 489-3920/f(662) 489-2986

PRENTISS

North – Trent W. Moore 1901-C E. Chambers Dr., Booneville 38829 ..(662) 728-8696/f(662) 728-2009
South – Kimi Drown Kitchens 1901-C E. Chambers Dr., Booneville 38829 ..(662) 728-8696/f(662) 728-2009

QUITMAN

District 1 – Brenda W. Cook 275 E. Main St., Marks 38646 (662) 326-2104/f(662) 326-2330
District 2 – Joe M. Brown 275 E. Main St., Marks 38646 (662) 326-2104/f(662) 326-2330

RANKIN

District 1 – Richard Redfern P.O. Box 71, Brandon 39043 (601) 824-2596/No Fax
District 2 – Bo Agnew P.O. Box 71, Brandon 39043 (601) 992-8589/No Fax
District 3 – Joshua McCrory P.O. Box 71, Brandon 39043 (601) 824-2598/No Fax
District 4 – Whitney McKay Adams ... P.O. Box 71, Brandon 39043 (601) 824-2597/No Fax

SCOTT

Post 1 – Adam McCurdy P.O. Box 371, Forest 39074 (601) 469-4555/f(601) 469-5193
Post 2 – Bill Freeman P.O. Box 371, Forest 39074 (601) 469-4555/f(601) 469-5193

SHARKEY

Post 1 – Charles Smith..... P.O. Box 39, Anguilla 38721..... (662) 873-6140/f(662) 873-0154
Post 2 – Clark Secoy..... P.O. Box 235, Rolling Fork 39159 (662) 873-6140/f(662) 873-0154

SIMPSON

Post 1 – Ted Blakeney 1498 Simpson Hwy. 149, Mendenhall 39114 ..(601) 847-5848/f(601) 847-5856
Post 2 – Charles A. Savell 1498 Simpson Hwy. 149, Mendenhall 39114 ..(601) 847-5848/f(601) 847-5856

SMITH

Post 1 – David Easterling P.O. Box 171, Raleigh 39153 (601) 782-4334/f(601) 782-5899
Post 2 – Hulon West P.O. Box 171, Raleigh 39153 (601) 782-4334/f(601) 782-5899

STONE

East – Justin Miles..... 231 Third St., Wiggins 39577 (601) 928-4415/f(601) 928-2114
West – Ricky Farmer 231 Third St., Wiggins 39577 (601) 928-4415/f(601) 928-2114

SUNFLOWER

North – Lisa Bell P.O. Box 52, Ruleville 38771 (662) 756-2835/f(662) 756-4175
South – Gwendolyn Pernell P.O. Box 487, Indianola 38751 (662) 887-2926/f(662) 887-2798

TALLAHATCHIE

District 1 – Steve Ross P.O. Box 440, Charleston 38921 (662) 647-3477/No Fax
 District 2 – Denise Washington P.O. Box 155, Sumner 38957 (662) 375-9452/No Fax

TATE

Post 1 – Malcolm (Trey) Manning 103 Preston McKay Dr., Senatobia 38668 (662) 562-7626/f(662) 562-7663
 Post 2 – Carolyn Shead 103 Preston McKay Dr., Senatobia 38668 (662) 562-7626/f(662) 562-7663

TIPPAH

North – Benny Jackson 205-B Spring Ave., Ripley 38663 (662) 837-8842/f(662) 837-1398
 South – Sonny Meeks 205-B Spring Ave., Ripley 38663 (662) 837-8842/f(662) 837-1398

TISHOMINGO

North – Seth Adams 1008 Battleground Dr., Iuka 38852 (662) 423-7033/f(662) 423-7094
 South – Donny Joe Sparks 1008 Battleground Dr., Iuka 38852 (662) 423-7033/f(662) 423-7094

TUNICA

North – Rodney Hibbler 5130 Old Moon Landing Rd., Tunica 38676 ..(662) 363-2178/f(662) 363-4234
 South – Richard W. Ryals II 5130 Old Moon Landing Rd., Tunica 38676 ..(662) 363-2178/f(662) 363-4234

UNION

East – David Garrison P.O. Box 27, New Albany 38652 (662) 534-1951/f(662) 534-1935
 West – Christopher Childers P.O. Box 27, New Albany 38652 (662) 534-1951/f(662) 534-1935

WALTHALL

District 1 – Carl Montgomery, Jr. 808 Magnolia Ave., Tylertown 39667 (601) 876-2311/f(601) 222-1351
 District 2 – Ryan Bruhl 808 Magnolia Ave., Tylertown 39667 (601) 876-2311/f(601) 222-1351

WARREN

Central – James E. Jefferson, Jr. P.O. Box 1598, Vicksburg 39181 (601) 634-6402/f(601) 630-8015
 North – Edwin Woods, Jr. P.O. Box 1598, Vicksburg 39181 (601) 634-6402/f(601) 630-8015
 South – Jeffrey Crevitt P.O. Box 1598, Vicksburg 39181 (601) 634-6402/f(601) 630-8015

WASHINGTON

District 1 – Laverne Holmes-Carter 905 W. Alexander, Greenville 38701 (662) 332-0633/f(662) 390-4760
 District 2 – Laverne Simpson 905 W. Alexander, Greenville 38701 (662) 332-0633/f(662) 390-4760
 District 3 – Cedric C. Bush 905 W. Alexander, Greenville 38701 (662) 332-0633/f(662) 390-4760

WAYNE

Post 1 – Charles Chapman 810 Chickasawhay St., Waynesboro 39367 ... (601) 735-3118/f(601) 735-6266
 Post 2 – Ralph Smith 810 Chickasawhay St., Waynesboro 39367 ... (601) 735-3118/f(601) 735-6266

WEBSTER

District 1 – Rebecca E. Ellison 24 E. Fox Ave., Eupora 39744 (662) 258-2590/f(662) 258-3093
 District 2 – Jerry Jones 24 E. Fox Ave., Eupora 39744 (662) 258-2590/f(662) 258-3093

WILKINSON

East – Ernest Smith P.O. Box 40, Woodville 39669 (601) 888-3538/f(601) 888-7591
 West – Lee Dixon P.O. Box 40, Woodville 39669 (601) 888-3538/f(601) 888-7591

WINSTON

East – Mike Fuller P.O. Box 327, Louisville 39339 (662) 773-6016/f(662) 773-8817
 West – Robert A. Beck P.O. Box 327, Louisville 39339 (662) 773-6016/f(662) 773-8817

YALOBUSHA

District 1 – Janet Caulder P.O. Box 475, Coffeeville 38922..... (662) 675-2025/f(662) 675-8188
 District 2 – Trent Howell 1510 N. Main St., Water Valley 38965.... (662) 473-1271/f(662) 473-3622

YAZOO

North – Pam Ingram May P.O. Box 798, Yazoo City 39194 (662) 746-8181/f(662) 746-2186
 South – Bennie (Kay) Warrington.....P.O. Box 798, Yazoo City 39194 (662) 746-8181/f(662) 746-2186

MUNICIPAL COURT JUDGES

Municipal courts have jurisdiction over misdemeanor crimes, municipal ordinances and city traffic violations. Municipal judges may conduct initial appearances in which defendants are advised of the charges being filed, as well as bond hearings and preliminary hearings.

There are 237 Municipal Courts with 259 judges. Most municipalities have one municipal judge, although a few jurisdictions have several. Most municipal judges are appointed by governing bodies of municipalities. Terms of office vary.

AbbevilleFrances E. Gordon..... P.O. Box 19, Abbeville 38601 (662) 236-3164/f(662) 236-275
Aberdeen.....Adrian Haynes.....125 W. Commerce St., Aberdeen 39730 ... (662) 369-4164/f(662) 369-0940
 Robert Earl Fowlkes 125 W. Commerce St., Aberdeen 39730 ... (662) 369-4164/f(662) 369-0940
Ackerman.....Buchanan Meek, Jr. P.O. Box 394, Ackerman 39735-0394..... (662) 285-6251/f(662) 285-6909
AlgomaPhil Weeks..... P.O. Box 110, Algoma 38820-0110 (662) 489-3200/f(662) 489-3200
AmoryT. W. Pace..... P.O. Box 457, Amory 38821-0457 (662) 256-5635/f(662) 256-6320
AnguillaTreves H. Cooper P.O. Box 217, Anguilla 38721-0271 (662) 873-4978/f(662) 873-4573
ArcolaLaverne Holmes Carter P.O. Box 25, Arcola 38722..... (662) 827-2063/f(662) 827-0451
AshlandBart Adams P.O. Box 246, Ashland 38603..... (662) 224-6282/f(662) 224-8257
Baldwyn.....Thomas Comer, Jr..... 202 S. 2nd St., Baldwyn 38824 (662) 365-1041/f(662) 365-1076
BatesvilleWilliam H. McKenzie III... P.O. Box 689, Batesville 38606..... (662) 563-4576/f(662) 563-5120
Bay Springs...Lilious Shoemaker P.O. Box 307, Bay Springs 39422..... (601) 764-4112/f(601) 764-4110
Bay St. Louis..George G. Libscomb, Jr. P.O. Box 2550, Bay Springs 39521..... (228) 467-9068/f(228) 466-5495
BeaumontJames V. Pope P.O. Box 605, Beaumont 39423-0605..... (601) 784-3352/f(601) 784-3352
BelmontDonnie Joe Sparks P.O. Box 489, Belmont 38827 (662) 454-3381/f(662) 454-9263
BelzoniW.C. Trotter III..... P.O. Box 338, Belzoni 39038-0338 (662) 247-2181/f(662) 247-2233
Benoit.....James Strait..... P.O. Box 66, Benoit 38725..... (662) 742-3751/f(662) 742-3758
Bentonla.....Wendy Shelton P.O. Box 310, Bentonla 39040-0310 (662) 755-2281/f(662) 755-2281
Big Creek.....Jimmy Vance..... P.O. Box 2098, Big Creek 38914..... (662) 232-8014/f(662) 628-5966
Biloxi.....W. Eugene Henry..... 170 Porter Ave., Biloxi 39530 (228) 435-6125/f(228) 435-6165
Blue Mountain..Joe T. Gray P.O. Box 116, Blue Mountain 38610..... (662) 685-4721/f(662) 685-4031
Blue Springs...Ronnie Rakestraw 26 Lamar St., Blue Springs 38828 (662) 840-9185/f(662) 842-2517
BoltonBernard C. Jones, Jr. P.O. Box 7, Bolton 39041..... (601) 866-2221/f(601) 866-7434
Booneville.....George M. Via..... 190 E. Chambers Dr., Booneville 38829... (662) 728-5961/f(662) 728-8836
BrandonMichael Younger P.O. Box 790, Brandon 39043 (601) 825-7227/f(601) 825-8595
 Jack B. Brenmen P.O. Box 790, Brandon 39043 (601) 825-7227/f(601) 825-8595
Brookhaven..Raymond Boutwell..... P.O. Box 560, Brookhaven 39602..... (601) 833-6262/f(601) 833-0787
Brooksville...Dorothy Stewart P.O. Box 256, Brooksville 39739-0256 ... (662) 738-5531/f(662) 738-5020
BruceOttilis B. Crocker P.O. Box 667, Bruce 38915 (662) 983-2492/f(662) 983-2433
Bude.....Ricky O’Quinn. P.O. Box 448, Bude 39630 (601) 384-2600/f(601) 384-4193
Burnsville.....Donnie Joe Sparks P.O. Box 308, Burnsville 38833-0308 (662) 427-9526/f(662) 427-0001
Byhalia.....Jim McGarrah P.O. Box 412, Byhalia 38611 (662) 838-2135/f(662) 838-3709
ByramDamon Stevenson P.O. Box 720222, Byram 39272 (601) 500-7010/f(601) 372-7748
 Dale Schwindaman..... P.O. Box 720222, Byram 39272 (601) 500-7010/f(601) 372-7748

CaledoniaPeggy Phillips.....	P.O. Box 100, Caledonia 39740	(662) 356-4117/f(662) 356-9122
Calhoun CityJimmy Vance.....	P.O. Box E, Calhoun City 38916	(662) 628-8345/f(662) 628-8931
CantonDaniel Spivey.....	P.O. Box 1605, Canton 39046.....	(601) 859-4331/f(601) 859-4331
CarthageJames E. Smith.....	212 W. Main St., Carthage 39051	(601) 267-5957/f(601) 267-8969
Centreville Davis S. Crawford.....	P.O. Box 578, Centreville 39631	(601) 645-5917/f(601) 645-6423
Charleston Steve Ross.....	P.O. Box 420, Charleston 38921	(662) 647-5841/f(662) 647-8768
Clarksdale Joseph C. Gibbs.....	P.O. Box 940, Clarksdale 38614	(662) 621-8138/f(662) 621-8130
..... Sandra Marshall.....	P.O. Box 940, Clarksdale 38614	(662) 621-8138/f(662) 621-8130
..... Don A. Dees.....	P.O. Box 940, Clarksdale 38614	(662) 621-8138/f(662) 621-8130
Cleveland Jeffrey Levingston.....	Box 58, Cleveland 38732.....	(662) 843-2791/f(662) 843-2797
Clinton Steven Nixon.....	305 Monroe St., Clinton 39056	(601) 924-4411/f(601) 925-1018
..... Sam Habeeb.....	305 Monroe St., Clinton 39056	(601) 924-4411/f(601) 925-1018
Coahoma Felicia Elmore.....	P.O. Box 103, Coahoma 38617-0103	(662) 337-2964/f(662) 337-4533
Coffeeville Rusty Harlow, Jr.....	P.O. Box 157, Coffeeville 38922-0157	(662) 675-2642/f(662) 675-8416
Coldwater Kenneth Stockton.....	P.O. Box 352, Coldwater 38618	(662) 622-7241/f(662) 622-7242
Collins John Laz Sanford.....	P.O. Box 400, Collins 39428	(601) 765-4491/f(601) 765-0050
Columbia Forest M. Dantin.....	201 Second St., Columbia 39429	(601) 736-4418/f(601) 736-7066
Columbus Curtis H. Austin.....	1501 Main St., Columbus 39701	(662) 244-3504/f(662) 244-3586
Como Jeff Padgett.....	P.O. Box 118, Como 38619	(662) 526-9647/f(662) 526-0210
Corinth John C. Ross.....	P.O. Box 226, Corinth 38835	(662) 286-6644/f(662) 287-7240
Courtland William H. McKenzie III..	P.O. Box 689, Batesville 38606	(662) 561-6645/f(662) 563-2726
Crenshaw Mildred J. LeSure.....	P.O. Box 342, Crenshaw 38621	(662) 382-5272/f(662) 382-7107
Crowder Michael Roy.....	P.O. Box 97, Crowder 38622	(662) 326-8822/f(662) 326-2600
Crystal Springs Forrest K. Wegge.....	P.O. Box 473, Crystal Springs 39059	(601) 892-2121/f(601) 892-6008
Decatur Jan Addy.....	P.O. Box 307, Decatur 39327-0307	(601) 635-2761/f(601) 635-4012
DeKalb Hardy R. Stennis.....	P.O. Box 579, DeKalb 39328	(601) 743-9197/f(601) 743-2422
Derma A.G. Gibson, Jr.....	P.O. Box 98, Derma 38839-0098	(662) 628-6635/f(662) 628-4101
Diamondhead Derek Cusick.....	5000 Diamondhead Cir., Diamondhead 39525.....	(228) 222-4626/f(888) 647-4390
D'Iberville Albert Fountain.....	P.O. Box 6519, D'Iberville 39540	(228) 392-9726/f(228) 392-8522
Drew Boyd Atkinson.....	120 W. Shaw Ave., Drew 38737	(662) 745-2200/f(662) 745-0183
Duck Hill Mary Brown.....	P.O. Box 368, Duck Hill 38925-0368	(662) 565-7200/f(662) 565-2721
Durant Jim H. Arnold, Jr.....	P.O. Box 272, Durant 39063	(662) 653-6446/f(662) 653-3799
Ecru David Hall.....	P.O. Box 526, Ecru 38841	(662) 489-3881/f(662) 489-0196
Edwards Ivory Britton.....	P.O. Box 215, Edwards 39066	(601) 852-5461/f(601) 852-8521
Ellisville David Lyons.....	110 N. Court St., Ellisville 39437	(601) 477-9252/f(601) 477-3929
Enterprise Edward N. Kramer III.....	P.O. Box 266, Enterprise 39330	(601) 659-7971/f(601) 659-7971
Eupora Buchanan Meek, Jr.....	390 E. Clark Ave., Eupora 39744	(662) 258-2291/f(662) 258-5331
Farmington ... Charles Willbanks.....	P.O. Box 2796, Farmington 38835	(662) 665-9647/f(662) 665-0067
Fayette Deborah McDonald.....	P.O. Box 637, Fayette 39069-0637	(601) 786-6329/f(601) 786-3530
Flora Bentley Conner.....	P.O. Box 218, Flora 39071	(601) 879-8873/f(601) 879-3630
Florence Ken Fairley.....	P.O. Box 309, Florence 39073	(601) 933-8061/f(601) 845-0058
Flowood Don Leland.....	2101 Airport Rd., Ste. B, Flowood 39232.....	(601) 420-3364/f(601) 420-3349
Forest Jerry L. Bustin.....	P.O. Box 298, Forest 39074-0382	(601) 469-4141/f(601) 469-3224
Friars Point .. Kenneth Busch.....	P.O. Box 185, Friars Point 38631-0185 ..	(662) 383-2233/f(662) 383-2403
Fulton Wiley Lance Bean.....	213 W. Wiygul, Fulton 38843	(662) 862-4929/f(662) 862-4926
Gautier Gary L. Roberts.....	3330 Hwy. 90, Gautier 39553.....	(228) 497-8036/f(228) 497-8043
Gloster Roger Arnold.....	P.O. Box 1019, Gloster 39638	(601) 225-4216/f(601) 225-4772
Golden Donny Joe Sparks.....	P.O. Box 426, Golden 38847-0426	(662) 454-7100/f(662) 454-7107
Goodman Jason White.....	P.O. Box 397, Goodman 39079-0397.....	(662) 472-2263/f(662) 472-2513
Greenville Michael L. Prewitt.....	302 Main St., Greenville 38702	(662) 378-1539/f(662) 378-1586
Greenwood ... Carlos D. Palmer.....	P.O. Box 272, Greenwood 38935	(662) 453-1833/f(662) 455-4114
Grenada James P. Vance.....	26 N. Green St., Grenada 38901	(662) 227-3430/f(662) 227-3401

JUDICIAL

Gulfport	Kirk Clark	P.O. Box 1780, Gulfport, 39502.....	(228) 868-3248/f(228) 868-5744
	R. Fant Walker	P.O. Box 1780, Gulfport, 39502.....	(228) 868-3248/f(228) 868-5744
Gunnison	Harold Ward	P.O. Box 278, Gunnison 38746.....	(662) 747-2213/f(662) 747-2263
Guntown	Pat Carr	P.O. Box 27, Guntown 38849-0027	(662) 348-5353/f(662) 348-2319
Hatley	Robert Earl Fowlkes	60279 Hatley Rd., Amory 38821	(662) 256-7245/f(662) 256-7255
Hattiesburg	Wes Curry	701 James St., Hattiesburg 39401.....	(601) 545-4933/f(601) 545-2488
	Brian Bledsoe	701 James St., Hattiesburg 39401.....	(601) 545-4933/f(601) 545-2488
Hazlehurst	James D. Shannon	P.O. Box 549, Hazlehurst 39083	(601) 894-1181/f(601) 894-3707
Heidelberg	Sullivan Dukes	P.O. Box 373, Heidelberg 39439-0372	(601) 787-3961/f(601) 787-3700
Hernando	Anthony Nowak	475 W. Commerce St., Hernando 38632	(662) 449-9096/f(662) 449-3350
Hickory	Jan Addy	P.O. Box 307, Hickory 39332-0010	(601) 646-2211/f(601) 646-2213
Hickory Flat	Gary McBride.....	P.O. Box 479, Hickory Flat 38633-0479 ..	(662) 333-7884/f(662) 333-6003
Hollandale	Sandra Jaribu Hill	P.O. Box 395, Hollandale 38748-0395	(662) 827-2241/f(662) 827-5596
Holly Springs	Eugene D. Brown	440 N. Memphis St., Holly Springs 38635.....	(662) 252-2122/f(662) 252-6220
Horn Lake	James E. Holland.....	3101 Goodman Rd., Horn Lake 38637.....	(662) 342-3541/f(662) 342-3481
Houston	Richard G. Bennett	P.O. Box 548, Houston 38851	(662) 456-2328/f(662) 456-9535
Indianola	Howard Davis.....	P.O. Drawer 269, Indianola 38751-0269 ..	(662) 887-7622/f(662) 887-6009
Inverness	Howard Davis	P.O. Box 166, Inverness 38753	(662) 265-5741/f(662) 265-6009
Isola	Stephanie Morris	P.O. Box 194, Isola 38754	(662) 962-7725/f(662) 962-6133
Itta Bena	Carlos Palmer.....	P.O. Box 563, Itta Bena 38941.....	(662) 254-6555/f(662) 254-6029
Iuka	Joey Cobb	118 S. Pearl St., Iuka 38852.....	(662) 423-3781/f(662) 423-1430
Jackson	Henry C. Clay III.....	P.O. Box 17, Jackson 39205.....	(601) 960-1938/f(601) 960-4027
	William Walker	P.O. Box 17, Jackson 39205.....	(601) 960-1938/f(601) 960-4027
	Jeffery P. Reynolds	P.O. Box 17, Jackson 39205.....	(601) 960-1938/f(601) 960-4027
	Taurean D. Buchanan	P.O. Box 17, Jackson 39205.....	(601) 960-1938/f(601) 960-4027
	Ali Shamsideen	P.O. Box 17, Jackson 39205.....	(601) 960-1938/f(601) 960-4027
	June Hardwick	P.O. Box 17, Jackson 39205.....	(601) 960-1938/f(601) 960-4027
Jonestown	Jessie Burton.....	P.O. Box 110, Jonestown 38639.....	(662) 358-4328/f(662) 358-4337
Kosciusko	L. Scott Pickle.....	220 W. Washington St., Kosciusko, 39090.....	(662) 289-7935/f(662) 289-7778
Lake	Todd Sorey	P.O. Box 39, Lake 39092	(601) 775-3552/f(601) 775-3546
Lambert	Patricia Booker.....	P.O. Box 1198, Lambert 38643-1198	(662) 326-8018/f(662) 326-8017
Laurel	Cecelia Arnold	317 S. Magnolia, Laurel 39440.....	(601) 428-6517/f(601) 399-4460
Leakesville	Joe Beard.....	301-A Lafayette Ave., Leakesville 39451 ..	(601) 394-2383/f(601) 394-2414
Leland	DeShandra Ross.....	P.O. Box 868, Leland, 38756	(662) 686-7611/f(662) 686-5758
Lena	Johnny Pope	P.O. Box 108, Lena 39094-0108.....	(601) 654-3332/f(601) 654-3332
Lexington	Robert G. Clark III	112 Spring St., Lexington 39169.....	(662) 834-1261/f(662) 834-2490
Liberty	Roger Arnold	P.O. Box 362, Liberty 39645.....	(601) 657-8071/f(601) 657-8078
Long Beach	Bradley Rath.....	P.O. Box 929, Long Beach 39560-0929 .	(228) 865-7841/f(228) 863-2771
Louin	Marvin Jones.....	P.O. Box 3, Louin 39338-0003	(601) 739-3630/f(601) 739-3630
Louise	W.C. Trotter III.....	P.O. Box 338, Belzoni 39038-0338	(662) 247-1362/f(662) 247-3333
Louisville	David T. Wilson	202 S. Church Ave., Louisville 39339	(662) 773-2500/f(662) 773-2444
Lucedale	Martin Seib.....	545 Oak St., Lucedale 39452.....	(601) 947-3336/f(601) 766-3337
Lumberton	Jefferson Stewart	P.O. Box 211, Lumberton 39455	(601) 796-8341/f(601) 796-2323
Lyon	Joseph C. Gibbs.....	Box 511, Lyon 38645.....	(662) 627-1600/f(662) 627-1600
Maben	Bennie Jones, Jr.....	P.O. Drawer L, Maben 39750	(662) 263-4212/f(662) 263-4112
Macon	Timothy L. Gowan.....	P.O. Box 29, Macon 39341	(662) 726-2918/f(662) 726-1076
Madison	Cynthia Speetjens	P.O. Box 2489, Madison 39130.....	(601) 856-6111/f(601) 856-2178
	Gregory J. Weber	P.O. Box 2489, Madison 39130.....	(601) 856-6111/f(601) 856-2178
Magee	William H. Smith III	123 Main St., Magee 39111	(601) 849-3344/f(601) 849-6461
Magnolia	Lem E. Mitchell	255 S. Cherry St., Magnolia 39652	(601) 783-9926/f(601) 783-9922
Mantachie	D. Kirk Tharp	P.O. Box 70, Mantachie 38855	(662) 282-7949/f(662) 282-4296
Marietta	George M. Via	1901 E. Chambers Dr., Booneville 38829	(662) 728-5961/f(662) 728-8836
Marion	Doug M. Engell.....	P.O. Box 310, Marion 39342-0035	(601) 483-9573/f(601) 482-4827

MarksRobert G. Roy.....	P.O. Box 315, Marks 38646.....	(662) 326-3161/f(662) 326-3161
MathistonBuchanan Meek, Jr.....	P.O. Box 178, Mathiston 39752-0178.....	(662) 263-4898/f(662) 263-4873
McCombDanny Smith.....	P.O. Box 1911, McComb 39648.....	(601) 684-3216/f(662) 684-1472
McLainJeff Byrd.....	P.O. Box 5, McLain 39456.....	(601) 753-2205/f(601) 753-2205
MeadvilleWilliam J. Halford, Jr.....	P.O. Box 309, Meadville 39653.....	(601) 384-5208/f(601) 384-4749
MendenhallBruce Smith.....	P.O. Box 487, Mendenhall 39114.....	(601) 847-2681/f(601) 847-6628
MeridianBeauchamp Jones III.....	2415 Sixth St., Meridian 39301.....	(601) 485-1839/f(601) 484-6812
	Lester Williamson.....	2415 Sixth St., Meridian 39301.....	(601) 485-1839/f(601) 484-6812
MerigoldJames Strait.....	Merigold Ct., Box 348, Merigold, 38759.....	(662) 748-2765/f(662) 748-2670
MetcalfeLaverne Holmes Carter.....	P.O. Box 250, Metcalfe 38760-0250.....	(662) 335-0212/f(662) 378-8041
MizeHulon West.....	P.O. Box 68, Mize 39116-0068.....	(601) 733-2221/f(601) 733-2220
MonticelloAlbert Turnage.....	Municipal Ct., Monticello 39654.....	(601) 587-7732/f(601) 587-7731
MoorheadGwendolyn Pernell.....	P.O. Box 578, Moorhead 38761-0578.....	(662) 246-5461/f(662) 246-5037
MortonWilbur McCurdy.....	P.O. Box 555, Morton 39117.....	(601) 732-8609/f(601) 732-7188
Moss PointMaxine Lawson Conway.....	4401 McInnis Ave., Moss Point 39563.....	(228) 474-3543/f(228) 474-4520
MoundBayou Harold Ward.....	P.O. Box 680, Mound Bayou 38762-0680.....	(662) 741-2194/f(662) 741-2195
Mount OliveBobby Wayne Mooney.....	P.O. Box 510, Mount Olive 39119.....	(601) 797-3496/f(601) 797-3035
MyrtleChristopher A. Childers.....	P.O. Box 127, Myrtle 38650-0127.....	(662) 534-1035/f(662) 534-1037
NatchezJim Blough.....	233 Devereaux Dr., Natchez 39120.....	(601) 445-7524/f(601) 442-3487
NettletonMike Malski.....	124 Short Ave., Nettleton, 38858.....	(662) 963-2605/f(662) 963-2168
New AlbanyStephen P. Livingston.....	P.O. Box 152, New Albany 38652.....	(662) 534-1035/f(662) 534-1037
New AugustaJames V. Poe.....	P.O. Box 401, New Augusta 39462.....	(601) 964-1801/f(601) 964-3719
New HebronAlbert Turnage.....	P.O. Box 173, New Hebron 39140.....	(601) 694-2115/f(601) 694-2114
New HoukaGary Turner.....	P.O. Box 416, New Houka 38850-0416.....	(662) 568-2745/f(662) 568-7951
NewtonJason Mangum.....	P.O. Box 502, Newton 39345.....	(601) 683-2041/f(601) 683-7453
NoxapaterDavid T. Wilson, Jr.....	P.O. Box 266, Noxapater 39346.....	(662) 773-6016/f(662) 724-2697
OaklandGaines Baker.....	P.O. Box 57, Oakland 38948.....	(662) 623-8668/f(662) 623-1533
Ocean SpringsMatthew Mestayer.....	503 Dewey Ave., Ocean Springs 39564.....	(228) 875-5009/f(228) 875-5126
OkolonaKenneth B. Mayfield.....	P.O. Box 111, Okolona 38860.....	(662) 447-5461/f(662) 447-3956
Olive BranchLeslie B. Shumake, Jr.....	6900 Highland St., Olive Branch 38654.....	(662) 892-9500/f(662) 892-9510
	Jim McGarran.....	6900 Highland St., Olive Branch 38654.....	(662) 892-9500/f(662) 892-9510
OsykaAubrey Rimes.....	P.O. Box 23, Osyka 39657.....	(601) 542-5041/f(601) 542-5832
OxfordLawrence Little.....	107 Courthouse Sq., Oxford 38655.....	(662) 232-2320/f(662) 232-2346
PaceHarold Ward.....	P.O. Box 216, Pace 38764.....	(662) 723-6292/f(662) 723-6198
PascagoulaMichael Fondren.....	P.O. Drawer 1385, Pascagoula 39568.....	(228) 762-2424/f(228) 938-6656
Pass ChristianF. Phillip Whittmann III.....	200 W. Scenic Dr., Pass Christian 39571.....	(228) 452-3307/f(228) 452-3320
PearlRichard Redfern.....	2422 Old Brandon Rd., Pearl 39208.....	(601) 939-3581/f(601) 985-0458
PelahatchieWill Hyche.....	P.O. Box 229, Pelahatchie 39145-0229.....	(601) 854-5223/f(601) 854-5059
PetalSheila Havard Smallwood.....	127 W. 8 th Ave., Petal 39465.....	(601) 582-5351/f(601) 582-8431
PhiladelphiaSteve Cumberland.....	525 Main St., Philadelphia 39350.....	(601) 656-3584/f(601) 650-3581
PicayuneRichelle Lumpkin.....	203 Goodyear Blvd., Picayune 39466.....	(601) 798-9773/f(601) 749-7011
PickensJim H. Arnold, Jr.....	P.O. Box 597, Pickens 39146-0297.....	(662) 468-2171/f(662) 468-2172
PlantersvilleJohn Sheffield.....	P.O. Box 207, Plantersville 38862.....	(662) 844-2012/f(662) 840-9565
PolkvilleJerry Baldwin.....	6606 Hwy. 13, Polkville 39117.....	(662) 537-3115/f(662) 537-3115
PontotocGreg Brown.....	225 W. Reynolds St., Pontotoc 38863.....	(662) 488-4020/f(662) 489-0103
PopeDarrin J. Westfaul.....	P.O. Box 126, Pope 38658.....	(662) 563-4799/f(662) 563-5656
PoplarvilleJames Hal Breland.....	200 Hwy. 26 E., Poplarville 39470.....	(601) 795-1002/f(601) 795-2884
Port GibsonBen Andrews.....	P.O. Box 607, Port Gibson 39150.....	(601) 437-4234/f(601) 437-8667
Potts CampErnest Cunningham.....	P.O. Box 57, Potts Camp 38659.....	(662) 333-7285/f(662) 333-7287
PrentissAlbert Turnage.....	P.O. Box 1344, Prentiss 39474.....	(601) 792-5196/f(601) 792-5190
PuckettKen Fairly.....	P.O. Box 130, Puckett 39151.....	(601) 825-8074/f(601) 854-5059
PurvisAnthony Mazingo.....	P.O. Box 308, Purvis 39475.....	(601) 794-6512/f(601) 794-8003

JUDICIAL

Quitman Jim Potuk	P.O. Box 16, Quitman 39355-0016.....	(601) 776-3728/f(601) 776-4010
Raleigh Jerry Baldwin	P.O. Box 355, Raleigh 39153.....	(601) 782-4672/f(601) 782-4278
Raymond William W. Ferguson	P.O. Box 10, Raymond 39154	(601) 857-0072/f(601) 857-0105
Richland Richard Redfern	371 Scarbrough St., Richland 39218	(601) 932-3100/f(601) 936-4614
Ridgeland Harold B. McCarley, Jr.....	P.O. Box 875, Ridgeland 39158.....	(601) 853-2001/f(601) 853-7954
 Robert W. Camp.....	P.O. Box 875, Ridgeland 39158.....	(601) 853-2001/f(601) 853-7954
Ripley Kevin Hall	500 S Main St., Ripley 38663	(662) 837-3659/f(662) 837-2212
Rolling Fork Sarah Hodnett	P.O. Box 310, Rolling Fork 39159.....	(662) 873-2212/f(662) 873-2443
Rosedale James Strait	P.O. Box 370, Rosedale 38769-0370.....	(662) 759-6813/f(662) 759-6731
Ruleville Kuykendall H. Murry	P.O. Box 428, Ruleville, 38771.....	(662) 756-2793/f(662) 756-9959
Salttillo Pat Carr	P.O. Box 1426, Salttillo 38866-1426	(662) 869-5454/f(662) 869-5470
Sandersville David Lyons	P.O. Box 692, Sandersville 39477-0692 ..	(601) 649-3068/f(601) 649-3622
Sardis Rhea Tannehill	P.O. Box 306, Sardis 38666.....	(662) 487-2371/f(662) 487-3389
 Gaines Baker	P.O. Box 306, Sardis 38666.....	(662) 487-2371/f(662) 487-3389
Scooba Hardy R. Stennis	P.O. Box 467, Scooba 39358	(662) 476-8451/f(662) 476-8281
Sebastopol Bill Freeman.....	P.O. Box 112, Sebastopol 39359.....	(601) 625-7200/f(601) 625-8538
Senatobia John T. Lamar.....	131 N. Front St., Senatobia 38668.....	(662) 562-5057/f(662) 560-0355
Shannon John H. Sheffield	P.O. Box 6, Shannon 38868.....	(662) 767-9747/f(662) 767-3206
Shaw Marcus Crump	P.O. Box 679, Shaw 38773-0679.....	(662) 754-3131/f(662) 754-5744
Shelby James Strait	P.O. Box 463, Shelby 38774.....	(662) 398-5156/f(662) 398-7878
Sherman Ronnie Rakestraw	P.O. Box 397, Sherman 38869.....	(662) 840-9185/f(662) 842-2517
Shubuta Katie Dickerson	P.O. Box 416, Shubuta 39360-0416.....	(601) 687-1536/f(601) 687-1291
Shuqualak Dorothy Stewart	P.O. Box 64, Shuqualak 39361	(662) 793-4675/f(662) 793-4791
Smithville Robert Fowlkes	P.O. Box 125, Smithville 38870-0125	(662) 651-4411/f(662) 651-5226
Snow Lake			
Shores Gary McBride.....	P.O. Box 400, Ashland 38603-0400.....	(662) 224-3050/f(662) 224-3338
Soso Cecelia Arnold	P.O. Box 99, Soso 39480	(601) 729-2958/f(601) 729-2186
Southaven Bob Perry	8889 Northwest Dr., Southaven 38671 ..	(662) 393-7042/f(662) 280-6536
Starkville Rodney P. Faver.....	101 Lampkin St., Starkville 39759.....	(662) 323-1491/f(662) 615-4141
State Line Charles Britton	P.O. Box 95, State Line 39362-0095.....	(601) 848-7755/f(601) 848-9493
Stonewall F.M. Mitts.....	P.O. Box 1059, Stonewall 39363-1059....	(601) 659-7033/f(601) 659-7035
Sturgis Jim Mills.....	P.O. Box 97, Sturgis 39769-0097	(662) 465-7970/f(662) 465-7972
Summit John H. White, Jr.	P.O. Box 517, Summit 39666	(601) 276-9511/f(601) 276-3502
Sumner Denise Washington	Box 397, Sumner 38957	(662) 375-8773/f(662) 375-8200
Sumrall George Gunter.....	P.O. Box 247, Sumrall 39482-0247.....	(601) 758-3591/f(601) 758-3581
Sunflower Kuykendall H. Murry	P.O. Box 127, Sunflower 38778-0145.....	(662) 569-3388/f(662) 569-3711
Taylorsville Hulon West	P.O. Box 358, Taylorsville 39168.....	(601) 785-6531/f(601) 785-2200
Tchula Wesley T. Evans	P.O. Box 356, Tchula 39169.....	(662) 235-5112/f(662) 235-5263
Terry Lee B. Agnew, Jr.	P.O. Box 327, Terry 39170	(601) 878-5521/f(601) 878-5535
Tishomingo Phillip Whitehead	P.O. Box 70, Tishomingo 38873-0070....	(662) 438-6402/f(662) 438-6403
Tunica Jim McGarrh	P.O. Box 395, Tunica 38676.....	(662) 363-2400/f(662) 363-1797
Tupelo Jay Weir	P.O. Box 765, Tupelo 38802-0765.....	(662) 841-6516/f(662) 841-6410
 Willie Allen	P.O. Box 765, Tupelo 38802-0765.....	(662) 841-6516/f(662) 841-6410
Tutwiler John W. Whitten III	P.O. Box 176, Tutwiler 38963-0176.....	(662) 345-8321/f(662) 345-9955
Tylertown Ryan Bruhl.	P.O. Box 191, Tylertown 39667.....	(601) 876-5121/f(601) 876-9114
Union Rex Gordon, Jr.....	404 Bank St., Union 39365.....	(601) 774-9422/f(601) 774-3595
Utica William Jordan	P.O. Box 335, Utica 39175-0335.....	(601) 885-8718/f(601) 885-2807
Vardaman Mark Ferguson.....	P.O. Box 194, Vardaman 38878-0194.....	(662) 682-7561/f(662) 682-7567
Verona Rickey Thompson	P.O. Box 420, Verona 38879	(662) 566-2211/f(662) 566-2209
Vicksburg John Allen Derivaux, Jr.	P.O. Box 150, Vicksburg 39181	(601) 631-3742/f(601) 801-3544
 Lewis H. Burke	P.O. Box 150, Vicksburg 39181	(601) 631-3742/f(601) 801-3544
 Walterine L. H. Burke	P.O. Box 150, Vicksburg 39181	(601) 631-3742/f(601) 801-3544

WallsKaren Carter	P.O. Box 35, Walls 38680.....	(662) 781-1282/f(662) 781-5444
WalnutSonny Meeks	P.O. Box 540, Walnut 38683.....	(662) 223-4405/f(662) 223-4374
Walnut GroveTodd Sorey	P.O. Box 69, Walnut Grove 39189.....	(601) 253-2321/f(601) 253-2385
Water ValleyTrent Howell	P.O. Box 888, Water Valley 38965.....	(662) 473-2431/f(662) 473-4909
WavelandPreston (P.J.) Mauffray	335 Coleman Ave., Waveland 39576	(228) 466-0042
WaynesboroCharles Chapman	714 Wayne St., Waynesboro 39367	(601) 735-3192/f(601) 735-6409
WebbDenise Washington	P.O. Box 677, Webb 38966.....	(662) 375-8164/f(662) 375-9494
WeirAndy Stephenson	P.O. Box 217, Weir 39772	(662) 547-6123/f(662) 547-6511
WessonJeffery A. Varas	P.O. Box 297, Wesson 39191	(601) 643-5221/f(601) 643-5201
WestAmy Gowan	P.O. Box 35, West 39192-0035.....	(662) 967-2308/f(662) 450-5008
West PointBennie L. Jones	P.O. Box 1117, West 39773	(662) 494-6386/f(662) 494-1398
WigginsSean Courtney	303 First St. S., Wiggins 39577	(601) 928-5443/f(601) 928-2724
WinonaAlan Devoe Lancaster	608 Summit St., Winona 38967-0446	(662) 283-1140/f(662) 283-1145
	Donald W. Bond	608 Summit St., Winona 38967-0446
		(662) 283-1140/f(662) 283-1145
WoodvilleAnthony Heidelberg.....	P.O. Box 605, Woodville 39669	(601) 888-3338/f(601) 888-4488
Yazoo CityLilli Evans Bass	P.O. Box 689, Yazoo City 39194.....	(662) 314-1021/f(662) 746-1568

INTERVENTION COURTS

Intervention courts include drug, veterans, and mental health courts. These special courts are authorized by Mississippi Code §§ 9-23-1 — 9-23-51, Intervention Courts; Mississippi Code § 9-25-1, Veterans Treatment Courts; and Mississippi Code §§ 9-27-1 — 9-27-21, the Rivers McGraw Mental Health Diversion Program Act.

Drug intervention courts address crimes committed by persons with drug and alcohol addiction along with other co-occurring disorders. Drug intervention courts seek to rehabilitate offenders through treatment and intense supervision that includes random substance testing. Drug intervention courts operate in every Circuit Court district as well as in some Youth Courts and a few Chancery Courts, Justice Courts and Municipal Courts. Mississippi’s first felony drug intervention court began in 1999.

In authorizing creation of veterans treatment courts, the Legislature recognized that in their service to our country, many military veterans may have suffered post-traumatic stress disorder, traumatic brain injury and depression, and may also suffer drug and alcohol dependency or addiction and co-occurring mental illness and substance abuse problems. As a result of this, some veterans come into contact with the criminal justice system and are charged with felony offenses. Circuit Courts are authorized to create veteran’s treatment courts to provide special treatment and supervision while also providing accountability for wrongdoing.

The Legislature authorized creation of mental health courts to establish court processes and procedures that are more responsive to the needs of defendants with mental illnesses, while maintaining public safety and the integrity of the court process. The goal of the mental health courts is to support effective and proven practices that reduce recidivism and provide treatment for participants.

Intervention courts seek to improve education, employment, housing, and financial stability; promote family reunification; reduce foster care placements when applicable; and increase the rate of mothers with substance use disorders delivering fully drug-free babies. Intervention courts recognize addiction as a disease and offer compassionate treatment. These special courts lead people living with substance abuse and mental health disorders out of the justice system and into lives of recovery and stability.

YOUTH COURTS

The Youth Courts deal with matters involving abuse and neglect of juveniles, as well as offenses committed by juveniles. Young people who have not reached the age of 18 may be subject to the Youth Court, although there are some exceptions. Some offenses which would be treated as crimes if committed by adults are known as delinquent acts when they involve juveniles.

In the 22 counties which have a County Court, those judges also serve as Youth Court judges. In counties which do not have a County Court, the Chancery Judge may hear Youth Court matters, or the Chancery Judge may appoint a lawyer to act in a judicial capacity as Youth Court Referee. The city of Pearl also has its own municipal Youth Court.

JUDICIAL RESOURCES

MISSISSIPPI COMMISSION ON JUDICIAL PERFORMANCE

660 North St., Ste. 104, Jackson 39202
 (601) 359-1273/f(601) 354-6277
 mailbox@judicialperformance.ms.gov
 Executive Director: Darlene D. Ballard

The Mississippi Commission of Judicial Performance (Commission) was created in 1979 by the Mississippi Legislature and the voters of the State of Mississippi by constitutional amendment. It was created to enforce the standards of judicial conduct, inquire into judicial liability and conduct, protect the public from judicial misconduct and disabled judges, and protect the judiciary from unfounded allegations. All proceedings before the Commission are of a civil nature, not criminal, as the purpose of the Commission is to be rehabilitative and educational as well as disciplinary.

Commission Members:

Judge Kent McDaniel, Chairman
 Cornelia Gayden, Vice-Chair
 Judge Vicki R. Barnes
 Judge Ryan Bruhl
 Roy D. Campbell III, Esq.
 Judge John H. Emfinger
 (Ret.) Col. Silvanus Johnson
 Judge Smith Murphey (Alternate)
 Judge Cynthia Brewer (Alternate)
 Judge Wes Curry (Alternate)
 Judge Richelle Lumpkin (Alternate)
 Karen K. Sawyer (Alternate)
 Robert E. Graves (Alternate)
 Jeffery M. Adcock (Alternate)

MISSISSIPPI JUDICIAL COLLEGE

Randy G. Pierce, Director
 207 Rebel Dr., Kinard Hall
 University, Mississippi 38677
 (662) 915-5955/f(662) 915-7845
 mjc.olemiss.edu
 Email: msjudcol@olemiss.edu

The Judicial College, a division of the University of Mississippi School of Law, is the state's provider of continuing legal judicial education and training for some 2,800 court-related personnel. It is funded annually by more than \$1 million through the State Court Education Fund. Founded in the 1970s, it was the first full-time state judicial education program in the U.S.

MISSISSIPPI JUDICIAL ADVISORY STUDY COMMITTEE

P.O. Box 117, Jackson 39205
 (601) 576-4630/f(601) 576-4639
 wwweaver@mssc.state.ms.us

The Judicial Advisory Study Committee was established to make recommendations to the Administrative Office of Courts in the administration of the courts; to conduct research relating to the improvement of the State's judicial system; and to make policy recommendations to promote the administration of justice and courts operation.

Chairman, Court of Appeals Judge Tyree Irving, Greenwood
 Vice-chair, Circuit Judge Lillie Blackmon Sanders, Natchez
 Attorney Lance Bonner, Jackson
 Businessman Howard Catchings, Jackson
 Attorney Gerald Cruthird, Picayune
 Chancery Judge Sebe Dale, Jr., Columbia
 Retired Chancery Judge Norman Gillespie, Oxford
 Lauderdale County Circuit Clerk Donna Jill Johnson, Meridian
 Chancery Court Administrator Noelle McKinnon, Laurel
 Julie McLemore, Mississippi Department of Agriculture and Commerce, Jackson
 Businessman Jimmy Murphy, Booneville
 Humphreys County Circuit Clerk Timaka Jones, Belzoni
 Lela Keys, Delta Community Partners in Care, Clarksdale
 Supreme Court Justice Leslie D. King, Greenville
 Chancery Judge Jacqueline Mask, Tupelo
 Hinds County Chancery Judge Denise Owens, Jackson
 Attorney J. Scott Newton, Jackson
 Adams County Chancery Clerk Thomas O'Beirne, Natchez
 Circuit Judge Lamar Pickard, Hazlehurst
 Attorney Alfred Rhodes, Jr., Jackson
 Businesswoman Robin Robinson, Laurel
 Harrison County Justice Court Judge Bruce Strong, Biloxi
 Rankin County Circuit Clerk Carol Swilley, Brandon
 Attorney Aleita Sullivan, Mendenhall
 Retired Rep. Robert Vince, Sandy Hook
 Lauderdale County Court Judge Veldore Young, Meridian

